

... A Vital Part of Connection World

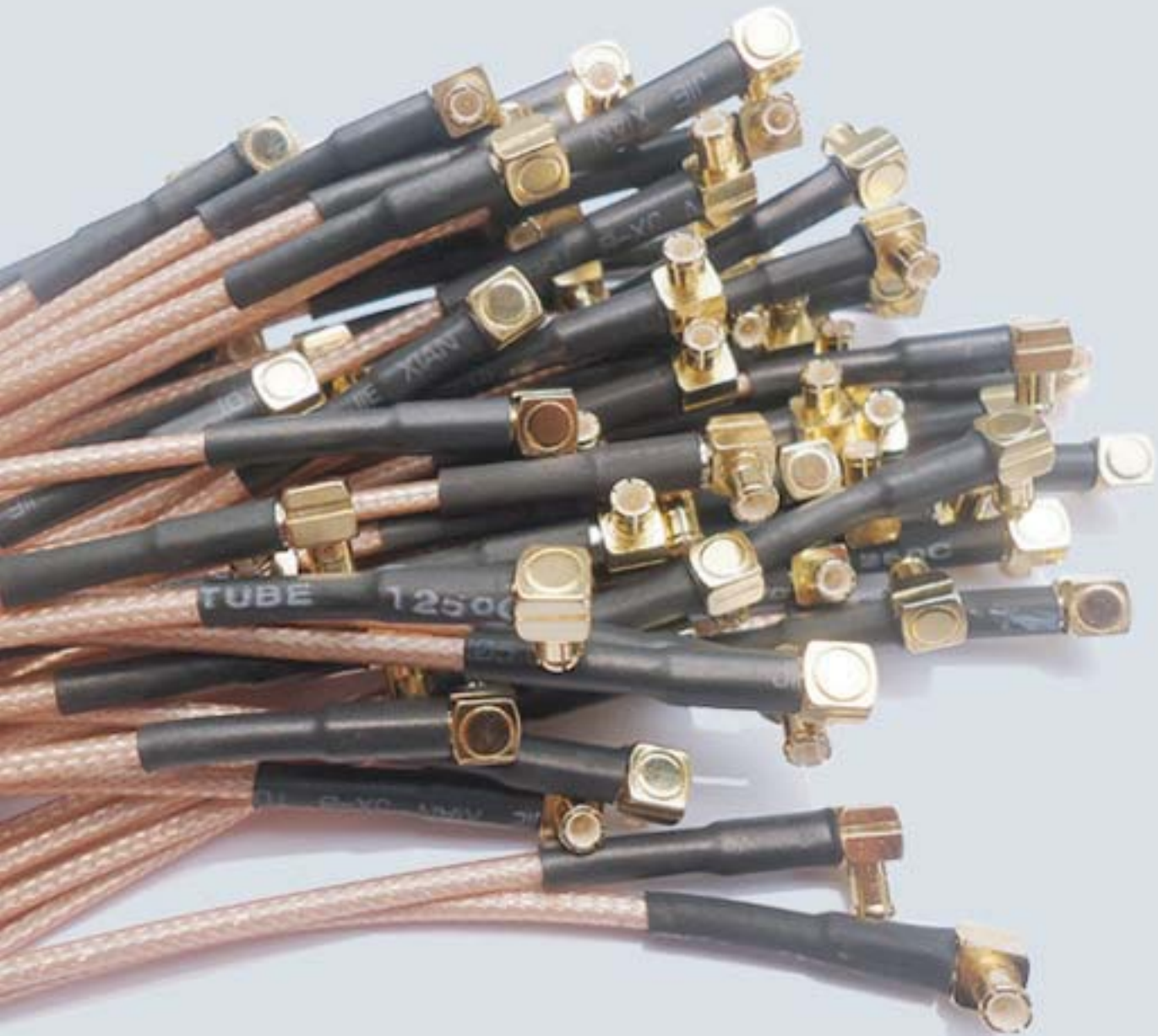
CMP_{TE}R®

Cable Connectors

PCB Connectors

Assembly Instructions

Mounting Holes



MCX CONNECTORS

MCX Series Coaxial Connectors



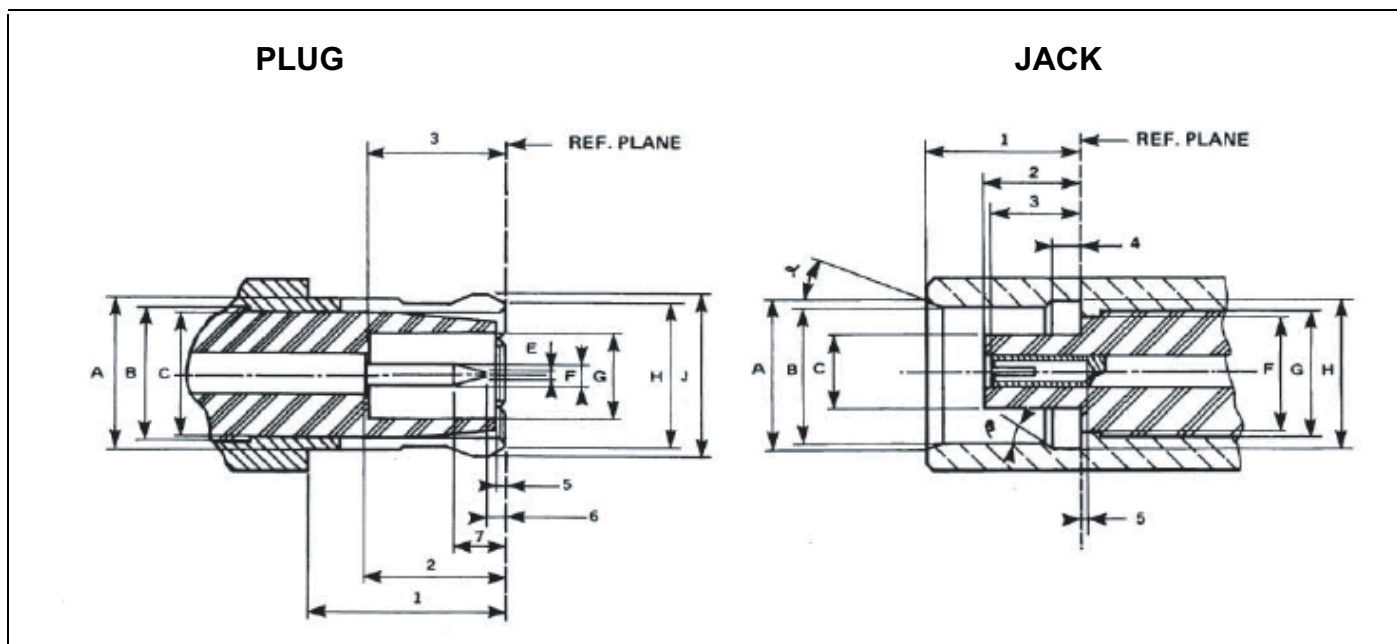
DESCRIPTION

MCX connectors are developed in Europe during the 1980s, use a snap-on interface, a blend of size, reliability and performance. Though smaller and lighter than the SMB by approximately 30%, the MCX still preserves the SMB's inner contact and overlapping dielectric insulator dimensions so that it can provide consistent electronic performance from DC-6 GHz.

Miniature snap-on connectors which offer an excellent blend of size, weight, durability, and performance for applications such as GPS, wireless communication, base station, WLAN, fixed communication systems, testing, and instrumentation applications.

CONTENTS

Description	1
Interface dimensions	2
Technical data	3
Cable connectors	4
PCB Connectors	7
Assembly instruction	8
Mounting Holes	13



LETTER	mm		inch	
	min.	max.	min.	max.
1	4.15	-	.163	
2	2.80	3.2	.110	.126
3	2.80		.110	
5	0	0.30	0	.012
6	0.15		0.06	
7		1.20		0.47
A		3.40		1.34
B	3.05 NOM.		.120 NOM.	
C		3.00		.118
E		0.25		0.10
F	0.48	0.53	0.19	.021
G	2.00		.079	
H		3.60		.142
J		3.80		.150

LETTER	mm		inch	
	min.	max.	min.	max.
1	4.00	4.12	.157	.162
2	2.60	2.80	.102	.110
3	2.30	2.80	.090	.110
4	0.75	0.85	.029	.033
5	0		0	
α	18°	22°	18°	22°
β	43°	47°	43°	47°
A	3.80		.150	
B	3.42	3.48	.135	.137
C		1.98		.078
F		3.00		.118
G	3.05 NOM.		3.05 NOM.	
H	3.60	3.75	.142	.148

Interface dimensions conformable to the standards:

International: **IEC 61169-4**
 Europe: **CECC 22190**
 Germany: **DIN 47223, VG 95250**

IP rating (interface, mated) IP68

TECHNICAL DATA



ELECTRICAL DATA	
Impedance	50 Ohm
Frequency range	DC 0-6 GHz
Voltage Rating	250 V peak
V.S.W.R.	Straight styles: 1.20 Right angle styles: 1.25
Insulation resistance	10,000 M Ω
Contact resistance	Center contact: 6 Ω ; Outer contact: 3 Ω

MECHANICAL DATA	
Mating	Slide-on, push-pull, threaded
Connector Durability (matings)	500 mating

MATERIAL DATA	
Male Contact	Brass
Female contact	Beryllium copper center and outer, gold plated
Insulator	Teflon
Crimp Ferrule	Copper

ENVIRONMENTAL	
Temperature Range	-40 °C to + 155 °C
Thermal shock	MIL STD 202 - method 107 condition C
High temperature test	MIL STD 202 - method 108A condition D
Corrosion	MIL STD 202 - method 101 condition B
Vibration	MIL STD 202, method 204, condition D

CABLE CONNECTORS

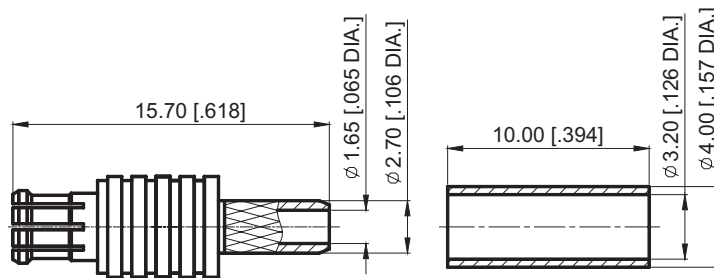


Straight cable plugs (male)



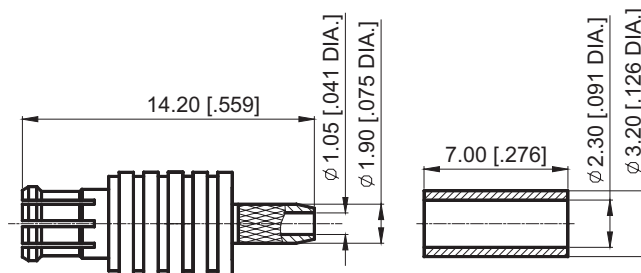
P/N	Cable Type	Finish		Assembly Instruction	Notes
		Center	Body		
30-03-1M04-001	LMR100/RG174/RG316	Gold	Gold	A01	

- > Cable entry crimp
- > Centre contact soldered



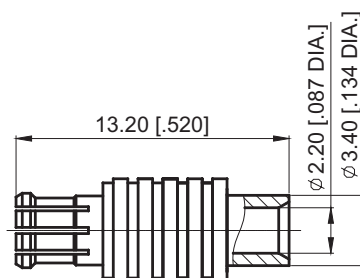
P/N	Cable Type	Finish		Assembly Instruction	Notes
		Center	Body		
30-03-1M12-002	RG178	Gold	Gold	A01	

- > Cable entry crimp
- > Centre contact soldered



P/N	Cable Type	Finish		Assembly Instruction	Notes
		Center	Body		
30-03-2M11-004	Semi-rigid .086/RG405	Gold	Gold	A02	

- > Cable entry soldered
- > Centre contact soldered



CABLE CONNECTORS



Right angle cable plugs (male)

P/N	Cable Type	Finish		Assembly Instruction	Notes
		Center	Body		

30-13-1M04-005

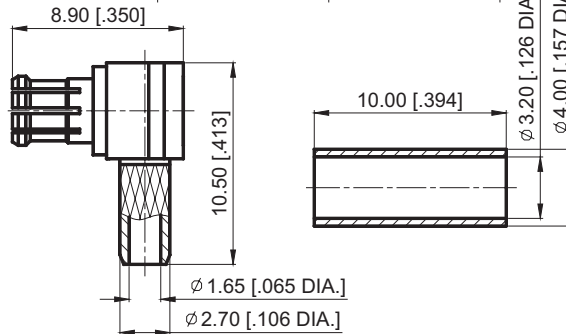
LMR100/RG174/RG316

Gold

Gold

A03

- > Cable entry crimp
- > Centre contact soldered



P/N	Cable Type	Finish		Assembly Instruction	Notes
		Center	Body		

30-13-1M12-006

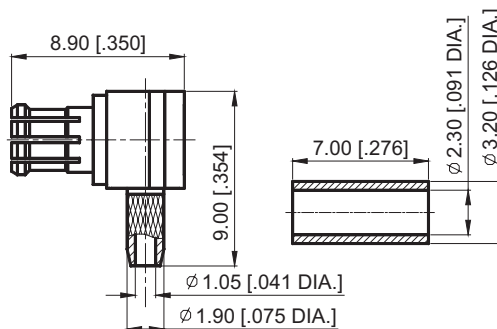
RG178

Gold

Gold

A03

- > Cable entry crimp
- > Centre contact soldered



P/N	Cable Type	Finish		Assembly Instruction	Notes
		Center	Body		

30-13-2M06-007

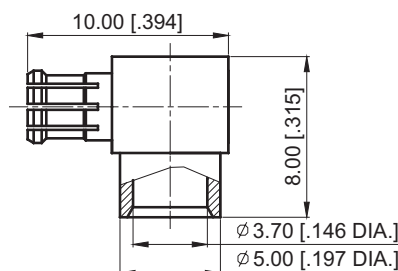
RG402/Semi-rigid .141

Gold

Gold

A04

- > Cable entry crimp
- > Centre contact soldered



CABLE CONNECTORS

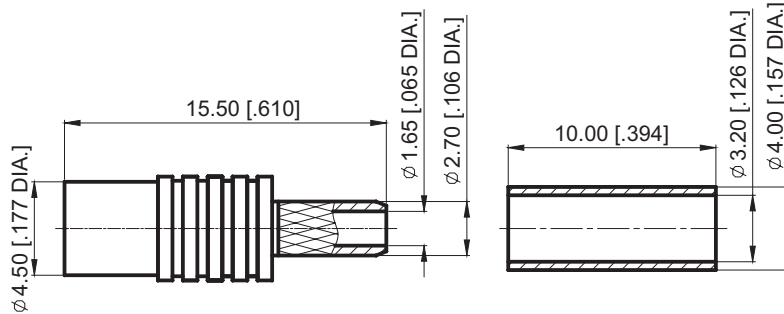


Straight cable jacks(female)



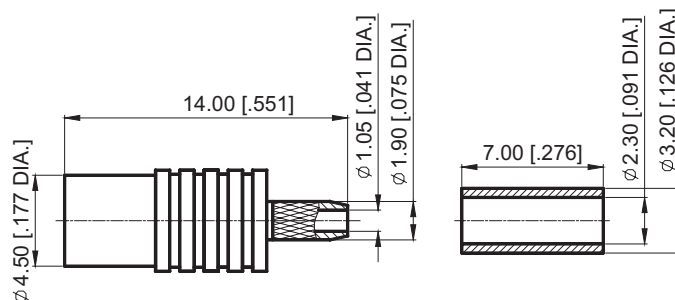
P/N	Cable Type	Finish		Assembly Instruction	Notes
		Center	Body		
30-02-1M04-010	LMR100/RG174/RG316	Gold	Gold	A01	

- > Cable entry crimp
- > Centre contact soldered



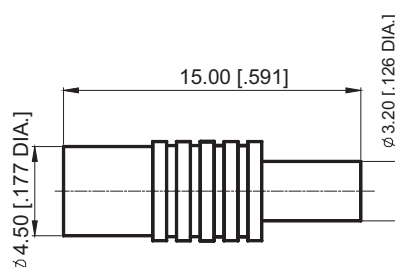
P/N	Cable Type	Finish		Assembly Instruction	Notes
		Center	Body		
30-02-1M12-011	RG178	Gold	Gold	A01	

- > Cable entry crimp
- > Centre contact soldered



P/N	Cable Type	Finish		Assembly Instruction	Notes
		Center	Body		
30-02-2M23-012	1.13mm/1.32mm/ 1.37mm Cable	Gold	Gold	A05	

- > Cable entry solder
- > Centre contact soldered



PCB CONNECTORS

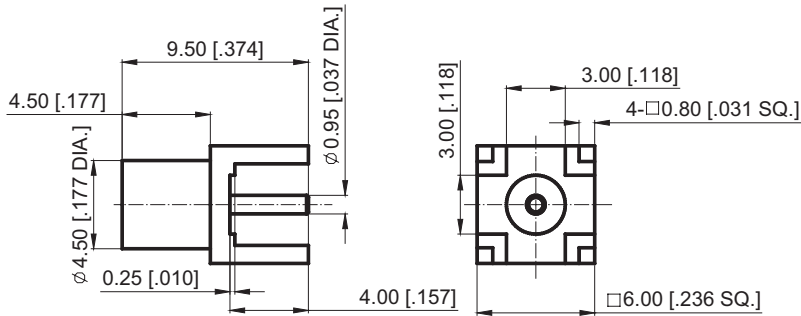


PCB jacks(female)



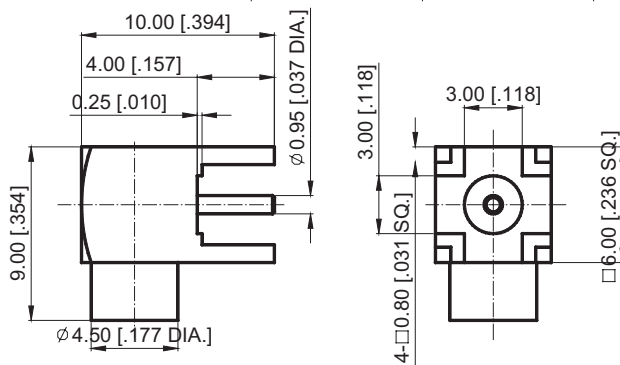
P/N	Mount Hole	Finish		Notes
		Center	Body	
30-02-5L2-013	M01	Gold	Gold	

> With stand-off



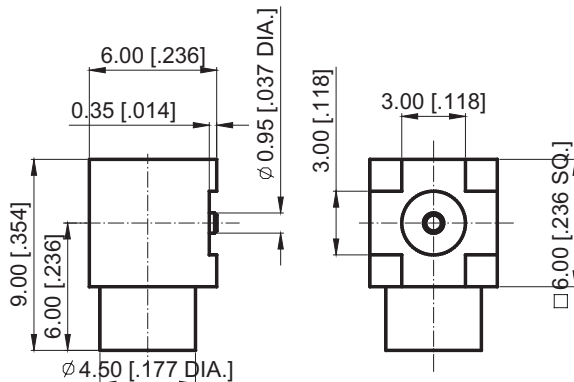
P/N	Soldering Pads	Finish		Notes
		Center	Body	
30-12-5L2-014	M01	Gold	Gold	

> With stand-off



P/N	Mount Hole	Finish		Notes
		Center	Body	
30-12-6L2-015	M02	Gold	Gold	

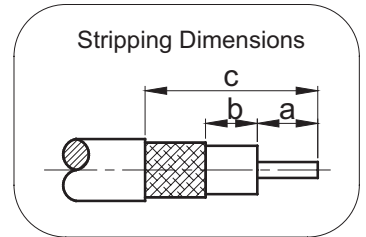
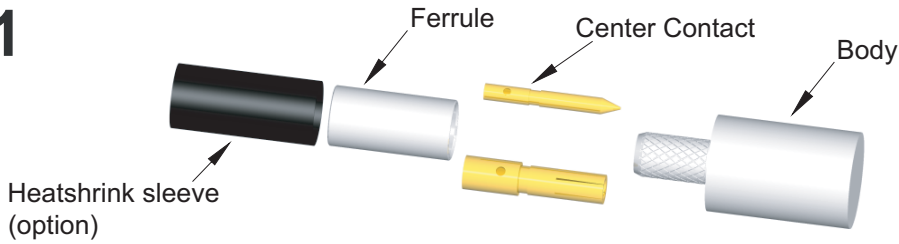
> SMT mounted



ASSEMBLY INSTRUCTIONS



A01



P/N	Cable Type	HEX. Crimp Tool (mm [in])	Stripping Length (mm [in])		
			a	b	c
30-03-1M12-002	RG178	2.54 [.100]	2.5 [.098]	2 [.079]	8.5 [.335]
30-02-1M12-011					
30-03-1M04-001	LMR100/RG174/RG316	3.25 [.128]	2.5 [.098]	2 [.079]	10 [.394]
30-02-1M04-010					

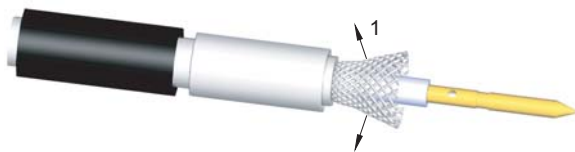
- Slide the heatshrink sleeve onto the cable (option).
- Slide the ferrule onto the cable.
- Strip the cable as Stripping Dimensions.



- Slide the center contact on until it bottom against the cable dielectric.
- Solder the center contact onto the cable.



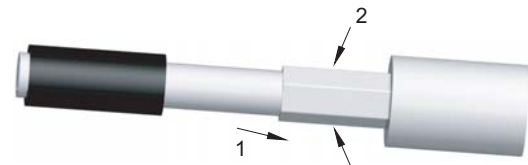
- Fan the braid.



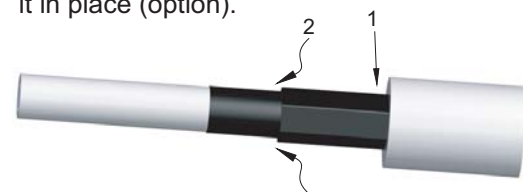
- Slide the cable into the body until stops.



- Slide the ferrule over the braid.
- Crimp the ferrule with crimping tool (see table).

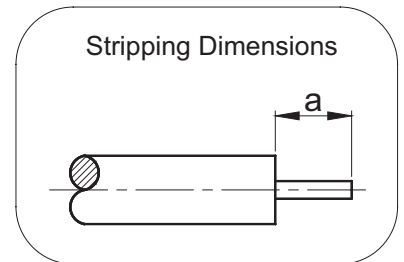
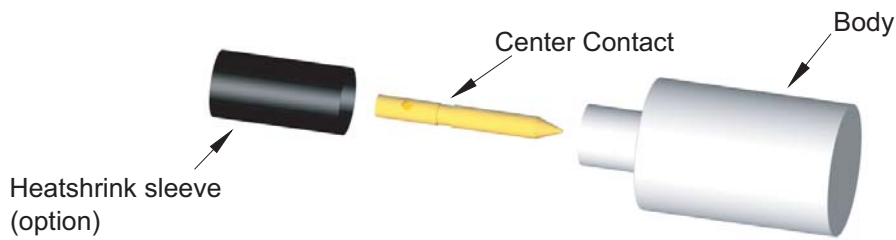


- Cut the excess of braid if necessary.
- Slide the sleeve over the ferrule and heatshrink it in place (option).



ASSEMBLY INSTRUCTIONS

A02



P/N	Cable Type	Stripping Length (mm [in])	Notes
30-03-2M11-004	RG405/Semi-rigid .086	3.00 [.118]	

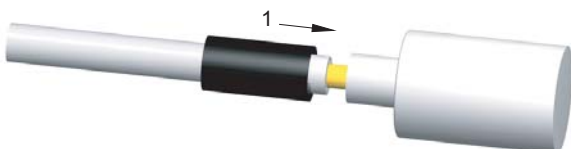
- Slide the heatshrink sleeve onto the cable (option).
Strip the cable as Stripping Dimensions.



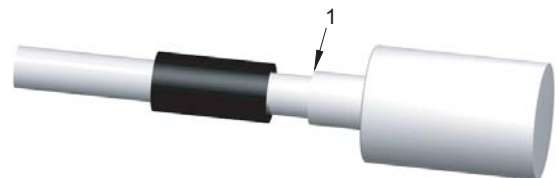
- Slide the center contact on until it bottom against the cable dielectric.
Solder the center contact onto the cable.



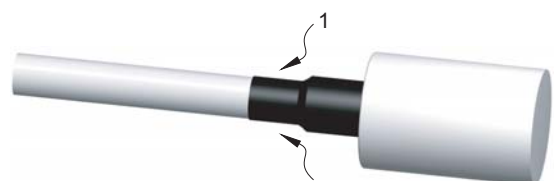
- Slide the cable into the body until it stops.



- Solder the body onto the cable.



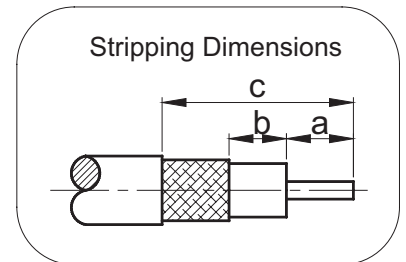
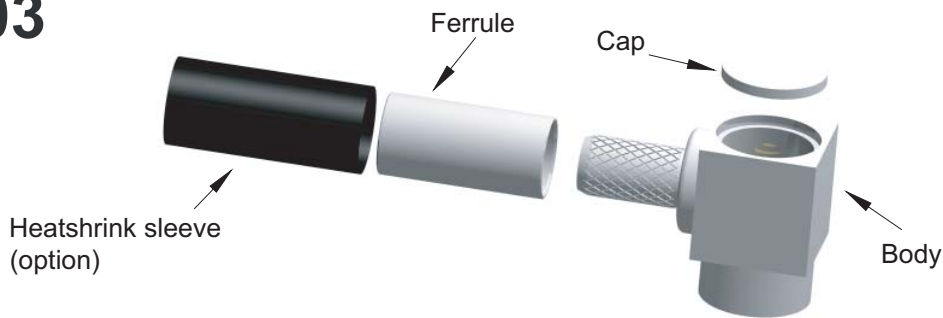
- Slide the heatshrink sleeve over the body and heatshrink it in place (option).



ASSEMBLY INSTRUCTIONS



A03



P/N	Cable Type	HEX. Crimp Tool (mm [in])	Stripping Length (mm [in])		
			a	b	c
30-13-1M12-006	RG178	2.54 [.100]	1.2 [.047]	2.3 [.091]	7.5 [.295]
30-13-1M04-005	LMR100/RG174/RG316	3.25 [.128]	1.2 [.047]	2.3 [.091]	9 [.354]

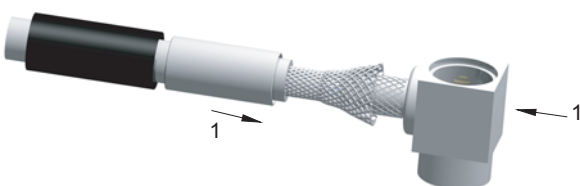
- Slide the heatshrink sleeve onto the cable (option).
Slide the ferrule onto the cable.
Strip the cable as Stripping Dimensions.



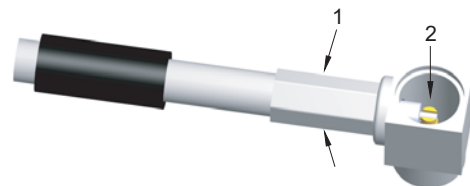
- Fan the braid.



- Push the body under the braid.
Slide the ferrule over the braid.



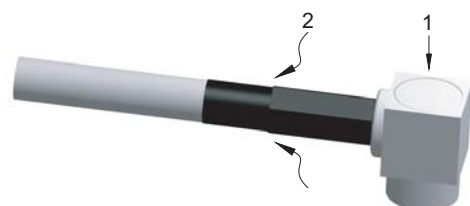
- Crimp the ferrule with crimping tool (see table).
Solder the inner conductor.



- Place the cap into the body.



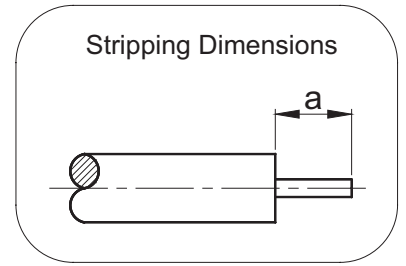
- Press on the cap until stops.
Slide the sleeve over the ferrule and heatshrink it in place (option).



ASSEMBLY INSTRUCTIONS



A04

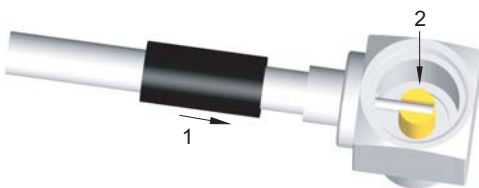


P/N	Cable Type	Stripping Length (mm [in])	Notes
30-13-2M06-007	RG402/Semi-rigid .141	3 [.118]	

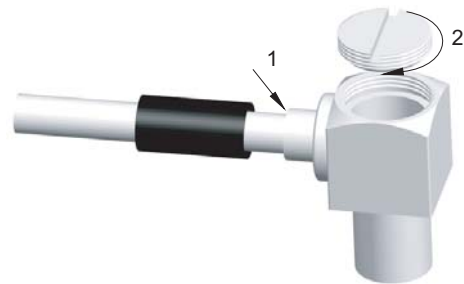
- Slide the heatshrink sleeve onto the cable (option).
 - Strip the cable as Stripping Dimensions.



- Slide the cable into the body until it stops.
 - Solder the inner conductor.



- Solder the cable onto the body.
 - Screw the back nut onto the body.



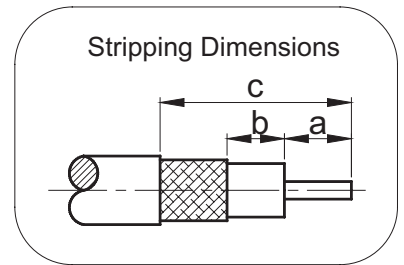
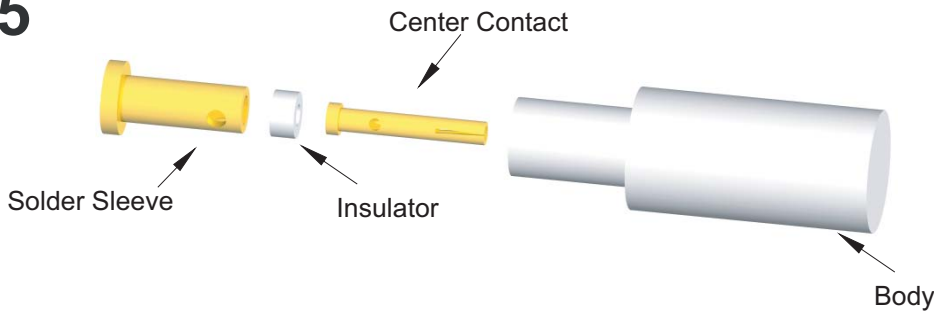
- Slide the sleeve over the body and heatshrink it in place (option).



ASSEMBLY INSTRUCTIONS



A05



P/N	Cable Type	HEX. Crimp Tool (mm [in])	Stripping Length (mm [in])		
			a	b	c
30-03-1M12-002	1.13mm/1.32mm/1.37mm Cable	2.54 [.100]	2.5 [.098]	1 [.039]	11 [.433]

- Strip the cable as Stripping Dimensions.
Soaking the inner and outer conductor with tin.



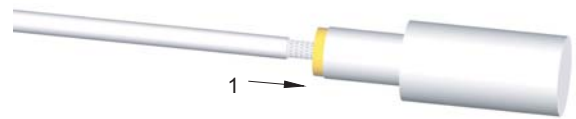
- Slide the Solder Sleeve onto the outerductor.
Solder the Solder Sleeve onto the cable (ensure the position of the Solder Sleeve).



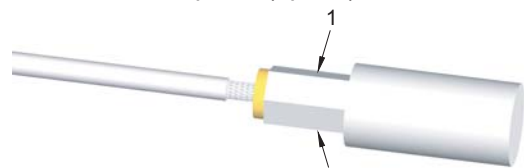
- Slide the Insulator onto the dielectric until it stops.
Slide the Center Contact onto the cable until it stops.
Solder the Center Contact onto the cable.



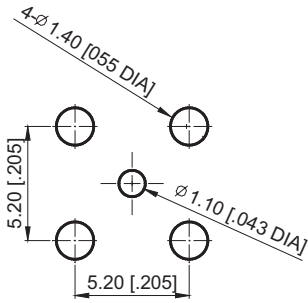
- Slide the cable into body until it stops.



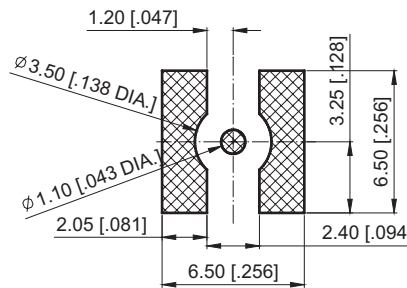
- Crimp the Body with crimping tool (see table).
Slide a Heatshrink Sleeve over the Body and heatshrink it in place (option).



MOUNTING HOLES



M01



M02

Cmpter Electronics, Ltd.

Office Adress: #7-5, East Business Area, DanTu District,
ZhenJiang City, 212028, JS, China
Tel:+86 511 8443 6131
Fax:+86 511 8717 7136
Email: sales@cmpter.com
Website: <http://www.cmpter.com>