

# TECHNICAL DATA

## Electrical

Impedance	50 Ω
Frequency range	0~6 GHz
Voltage Rating	250 V rms
Insulation resistance	≥1000MΩ

## Mechanical & Environmental

Durability (matings)	>500
Temperature range	-55 °C ~ +165 °C
RoHS Compliant	Yes

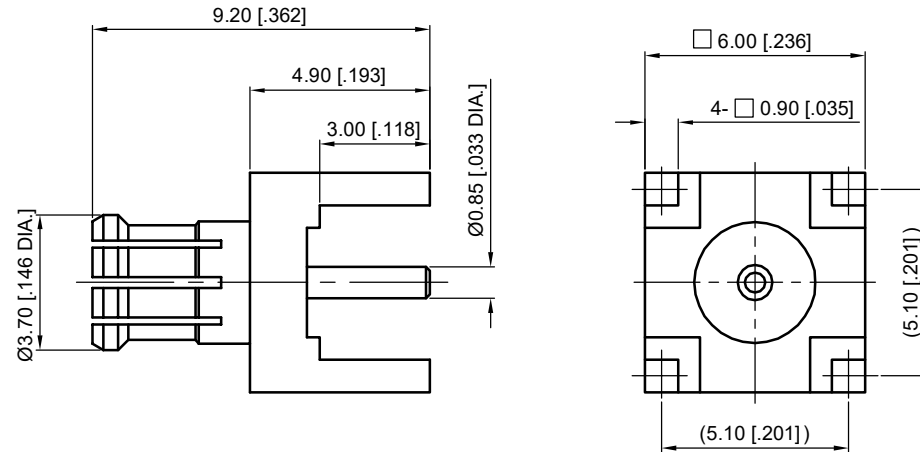
## Material & Finish

Body	Brass, Gold-plated
Pin Contact	Brass, Gold-plated
Insulator	PTFE

## Interface Standards

MCX	IEC-61169
-----	-----------

REVISIONS				
REV	DESCRIPTION OF REVISION	ECN No.	DATE	APPROVED
A	INITIAL RELEASE	—	06/09/2015	M. Dong



Part Number	Part / Finish
30-03-5L2-0 32-1	Body / Gold
30-03-5L2-0 32-2	Body / Nickel

UNLESS OTHERWISE SPECIFIED, DIMENSIONS ARE IN MILLIMETERS (INCHES).  
UNLESS OTHERWISE SPECIFIED DIMENSIONAL TOLERANCES ARE:

.XX ±0.13 [0.005]  
.X ±0.20 [0.008]  
X ±0.50 [0.019]

ANGULAR TOLERANCES ARE: ALL= ±1°

DO NOT SCALE DRAWING

PROJECTION:

DRAWN:	L. Ma	06/09/2015
CHECKED:	J. Zhu	06/09/2015
APPROVED:	M. Dong	06/09/2015

TITLE: MCX Straight Male for PCB

**CMPPTER**®

Cmppter Electronics Co., Ltd. [www.cmppter.com](http://www.cmppter.com)

PART No.: **30-03-5L2-0 32**

SIZE: A4	SCALE: 5:1	SHEET: 1/1	REV: A
----------	------------	------------	--------

### NOTES:

- ALL SPECIFICATIONS ARE SUBJECT TO CHANGE WITHOUT NOTICE AT ANY TIME
- UNLESS OTHERWISE SPECIFIED ALL DIMENSIONS ARE NOMINAL.