

# TECHNICAL DATA

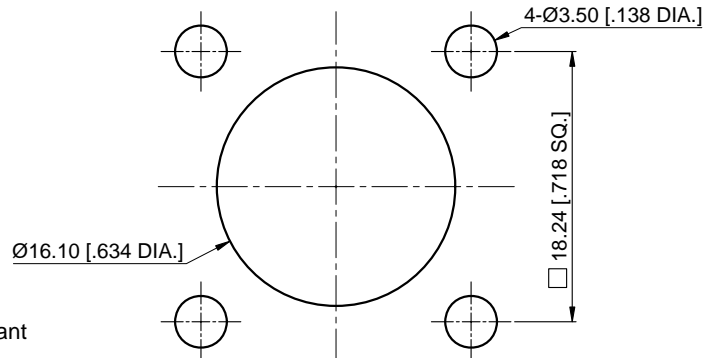
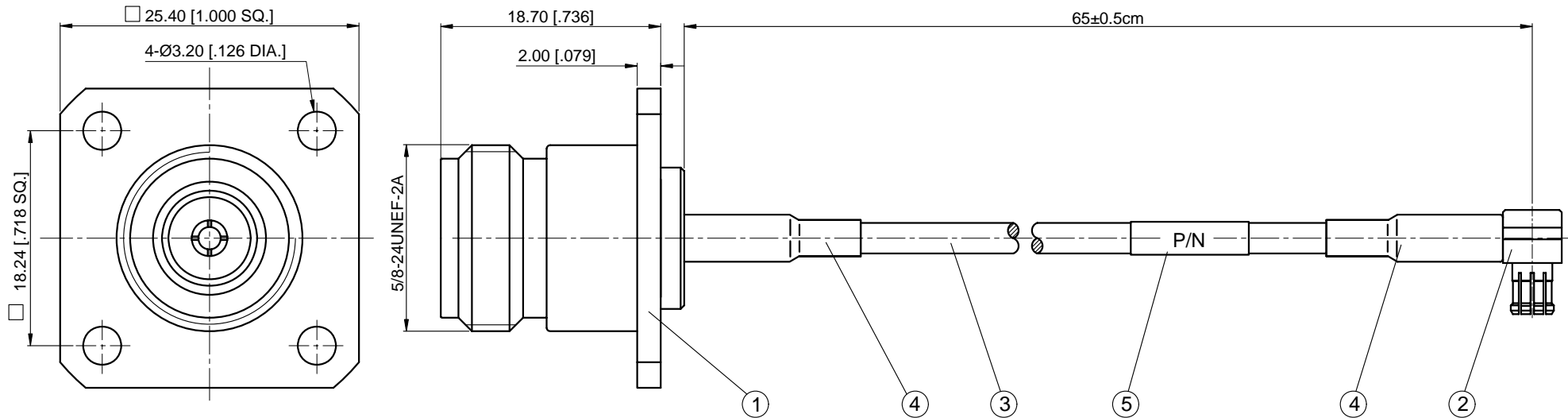
1. Impedance: 50 Ω
2. Temp. range: -55~+125 °C
3. Durability: 500 Cycles
4. Withstanding voltage: 335 Vrms
5. Frequency range: 0~3 GHz
6. Cable assembly to be 100% tested for continuity

## 7. MATERIALS AND FINISHES

**N Straight Female 4 Hole Flange Connector:**  
 Body - Brass plated Nickel  
 Center contact - Phosphor Bronze plated Gold  
 Insulator - PTFE

**MCX Right Angle Male Connector:**  
 Body - Brass & Phosphor Bronze plated Gold  
 Center contact - Brass plated Gold  
 Insulator - PTFE

REVISIONS				
REV	DESCRIPTION OF REVISION	ECN No.	DATE	APPROVED
A	INITIAL RELEASE	---	01/21/2014	M. Dong
B	N CONNECTOR REVISION CHANGED	---	02/20/2014	M. Dong



RoHS Compliant

### NOTES:

1. ALL SPECIFICATIONS ARE SUBJECT TO CHANGE WITHOUT NOTICE AT ANY TIME
2. UNLESS OTHERWISE SPECIFIED ALL DIMENSIONS ARE NOMINAL.

### Recommended Mounting Hole

5		Customer Label	1
4	HSTD-4-BK	4mm Diameter Dual Wall (Adhesive/glue) Heat-shrinkable Tube	2
3	RG316	Flexible RG316 Coax Cable Single shielded with Tan FEP Jacket	1
2	30-13-1M00-005	MCX Right Angle Male Crimp for RG174/RG316/LMR100 Cable	1
1	50-02-8F00-076	N Straight Female Crimp for LMR100/RG174/RG316 Cable, 4 Hole Flange Panel Mount	1
S/N	Part No.	Description	QTY

UNLESS OTHERWISE SPECIFIED, DIMENSIONS ARE IN MILLIMETERS [INCHES].  
 UNLESS OTHERWISE SPECIFIED DIMENSIONAL TOLERANCES ARE:  
 .XX ±0.13 [0.005"]  
 .X ±0.20 [0.008"]  
 X ±0.50 [0.019"]  
 ANGULAR TOLERANCES ARE: ALL±1°  
 OVERALL CABLE LENGTH TOLERANCES ARE: ±2%  
 DO NOT SCALE DRAWING  
 PROJECTION:

DRAWN: L. Ma 02/20/2014  
 CHECKED: J. Zhu 02/20/2014  
 APPROVED: M. Dong 02/20/2014

TITLE:  
 Cable Assembly, N Straight Female 4 Hole Flange to MCX Right Angle Male, RG316 Cable, 65cm

**CMPPTER**<sup>®</sup>  
 Cmppter Electronics Co., Ltd. [www.cmppter.com](http://www.cmppter.com)  
 PART No.: CA316-NF4H-MCXRAM-65cm-531  
 SIZE: A4 SCALE: 2:1 SHEET: 1/1 REV: B