

# TECHNICAL DATA

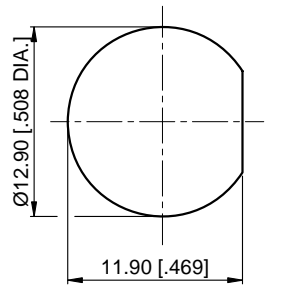
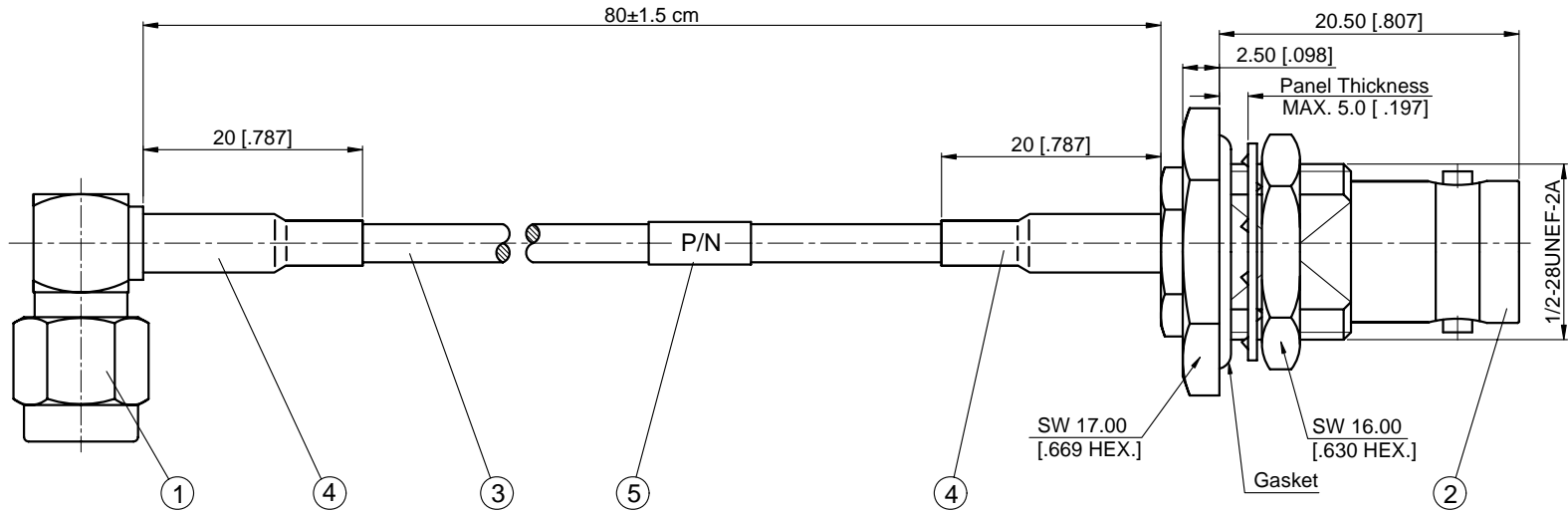
1. Impedance: 50 Ω
2. Temp. range: -55~+165 °C
3. Durability: 500 Cycles
4. Withstanding voltage: 500 Vrms
5. Frequency range: 0~1 GHz
6. Cable assembly to be 100% tested for continuity

## 7. MATERIALS AND FINISHES

**SMA Right Angle Male Connector:**  
 Body & Nut - Brass plated Gold  
 Center contact - Brass plated Gold  
 Insulator - PTFE  
 Gasket - Silicone Rubber

**BNC Bulkhead Female Connector:**  
 Body - Brass plated Nickel  
 Center contact - Phosphor Bronze plated Gold  
 Fastening Nut - Brass plated Nickel  
 Insulator - PTFE  
 Gasket - Silicone Rubber

REVISIONS				
REV	DESCRIPTION OF REVISION	ECN No.	DATE	APPROVED
A	INITIAL RELEASE		09/30/2014	M. Dong



5		Customer Label	1
4	HSTD-4-BK	4mm Diameter Dual Wall (Adhesive/glue) Heat-shrinkable Tube	2
3	RG316D	Flexible RG316D Coax Cable Double Shielded with Tan FEP Jacket	1
2	10-02-1D04-066	BNC Straight Waterproof Bulkhead Female Crimp for RG316D Cable	1
1	60-13-1M04-151	SMA Right Angle Male Crimp for RG316D Cable	1
S/N	Part No.	Description	QTY

RoHS Compliant

### NOTES:

1. ALL SPECIFICATIONS ARE SUBJECT TO CHANGE WITHOUT NOTICE AT ANY TIME
2. UNLESS OTHERWISE SPECIFIED ALL DIMENSIONS ARE NOMINAL.

UNLESS OTHERWISE SPECIFIED, DIMENSIONS ARE IN MILLIMETERS [INCHES].  
 UNLESS OTHERWISE SPECIFIED DIMENSIONAL TOLERANCES ARE:  
 .XX ±0.13 [.005"]  
 .X ±0.20 [.008"]  
 X ±0.50 [.019"]  
 ANGULAR TOLERANCES ARE: ALL ±1°  
 OVERALL CABLE LENGTH TOLERANCES ARE: ±2%  
 DO NOT SCALE DRAWING  
 PROJECTION:

DRAWN: L. Ma 09/30/2014  
 CHECKED: J. Zhu 09/30/2014  
 APPROVED: M. Dong 09/30/2014

TITLE:  
 Cable Assembly, SMA Right Angle Male to BNC Straight Waterproof Bulkhead Female, RG316D Cable, 80cm

**CMP TER**  
 Cmpter Electronics Co., Ltd. [www.cmpter.com](http://www.cmpter.com)  
 PART No.: CA316D-SMARAM-BNCFBW-80cm-702  
 SIZE: A4 SCALE: 2:1 SHEET: 1/1 REV: A