

**TECHNICAL DATA**

**Electrical**

Impedance 50 Ω  
 Frequency range 0~40 GHz  
 VSWR ≤1.20 (DC to 18GHz)  
 ≤1.30 (18 to 26.5GHz)  
 ≤1.40 (26.5 to 40GHz)

Average Power 2W

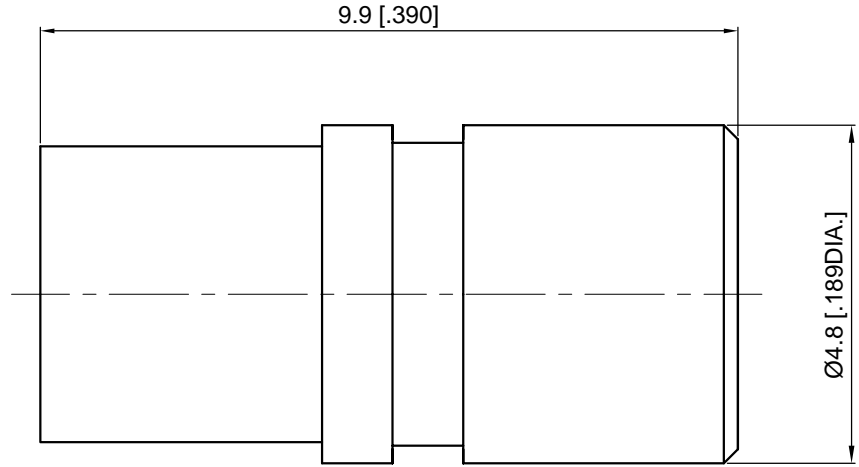
**Mechanical & Environmental**

Durability (matings) >500  
 Temperature range -55 °C ~ +125 °C  
 RoHS Compliant Yes

**Material & Finish**

Body Brass, Gold-plated  
 Pin Contact Brass, Gold-plated  
 Insulator PTFE

REVISIONS				
REV	DESCRIPTION OF REVISION	ECN No.	DATE	APPROVED
A	INITIAL RELEASE	—	03/16/2018	M. Dong



1

2

3

4

5

6

7

1

2

3

4

5

6

7

- NOTES:
1. ALL SPECIFICATIONS ARE SUBJECT TO CHANGE WITHOUT NOTICE AT ANY TIME
  2. UNLESS OTHERWISE SPECIFIED ALL DIMENSIONS ARE NOMINAL.

UNLESS OTHERWISE SPECIFIED, DIMENSIONS ARE IN MILLIMETERS [INCHES]. UNLESS OTHERWISE SPECIFIED DIMENSIONAL TOLERANCES ARE: .XX ±0.13 [005"] X ±0.20 [008"] X ±0.50 [019"] ANGULAR TOLERANCES ARE: ALL= ±1° DO NOT SCALE DRAWING PROJECTION:
--

DRAWN:	L. Ma	03/16/2018
CHECKED:	J. Zhu	03/16/2018
APPROVED:	M. Dong	03/16/2018

TITLE:  
**SMP Male Termination,  
 2W, 40GHz**

**CMP TER**®  
 Cmpter Electronics Co., Ltd. [www.cmpter.com](http://www.cmpter.com)

PART No.:  
**T-SMPM-070**

SIZE: A4	SCALE: 10:1	SHEET: 1/1	REV: A
----------	-------------	------------	--------