

TECHNICAL DATA

Electrical

Impedance 50 Ω
 Frequency range 0~3 GHz
 Withstanding voltage ≥2500V
 Insulation resistance ≥5000MΩ

Mechanical & Environmental

Durability (matings) >500
 Temperature range -65 °C ~ +165 °C
 RoHS Compliant Yes

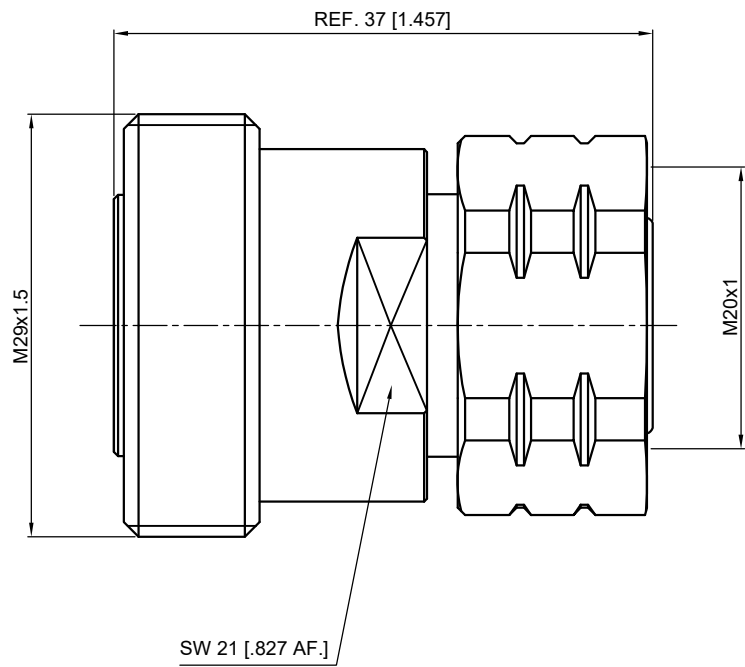
Material & Finish

Body Brass, Albaloy-plated
 Pin Contact Brass, Silver-plated
 Insulator PTFE
 Gasket Silicone Rubber

Interface Standards

7/16 IEC 60169-4
 4.3-10 IEC61169-54

REVISIONS				
REV	DESCRIPTION OF REVISION	ECN No.	DATE	APPROVED
A	INITIAL RELEASE	—	09/09/2019	M. Dong



1
2
3
4
5
6
7

1
2
3
4
5
6
7

- NOTES:
- ALL SPECIFICATIONS ARE SUBJECT TO CHANGE WITHOUT NOTICE AT ANY TIME
 - UNLESS OTHERWISE SPECIFIED ALL DIMENSIONS ARE NOMINAL.

UNLESS OTHERWISE SPECIFIED, DIMENSIONS ARE IN MILLIMETERS [INCHES]. UNLESS OTHERWISE SPECIFIED DIMENSIONAL TOLERANCES ARE: .XX ±0.13 [0.05"] X ±0.20 [0.08"] X ±0.50 [0.19"] ANGULAR TOLERANCES ARE: ALL = ±1° DO NOT SCALE DRAWING PROJECTION:	
--	--

DRAWN:	L. Ma	09/09/2019
CHECKED:	J. Zhu	09/09/2019
APPROVED:	M. Dong	09/09/2019

TITLE:
Adapter, 7/16 Female to 4.3/10 Male

CMP TER®
 Cmpter Electronics Co., Ltd. www.cmpter.com

PART No.:
A-716F-4.310M-373

SIZE: A4	SCALE: 2:1	SHEET: 1/1	REV: A
----------	------------	------------	--------