

# TECHNICAL DATA

## Electrical

Impedance 50 Ω  
 Frequency range 0~18 GHz  
 VSWR ≤1.30  
 Withstanding voltage 1000 V

## Mechanical & Environmental

Durability (matings) >500  
 Temperature range -55 °C ~ +165 °C  
 RoHS Compliant Yes

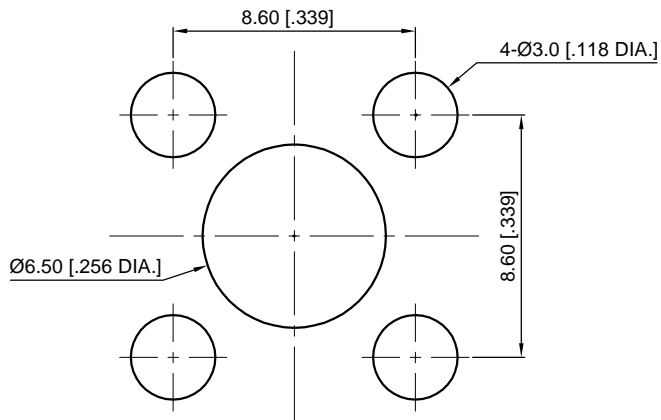
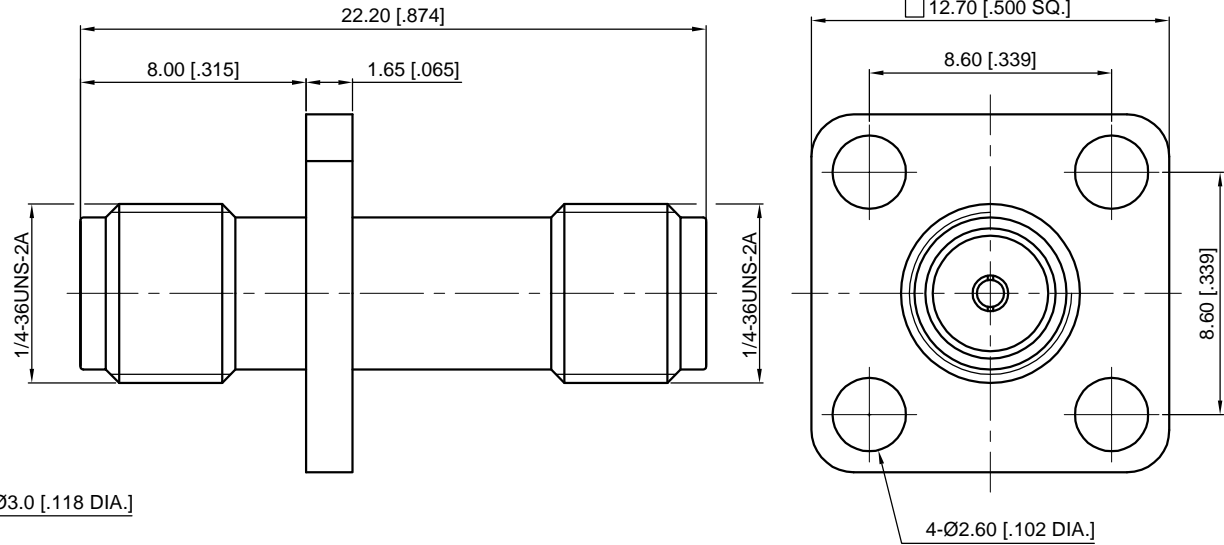
## Material & Finish

Body Brass, Gold-plated  
 Pin Contact Beryllium Copper Alloy, Gold-plated  
 Insulator PTFE

## Interface Standards

SMA IEC-60169

REVISIONS				
REV	DESCRIPTION OF REVISION	ECN No.	DATE	APPROVED
A	INITIAL RELEASE	---	05/11/2010	M. Dong
B	DIMENSIONS CHANGED	---	10/17/2016	M. Dong
C	PERFORMANCE CHANGED	---	09/08/2020	M. Dong



Recommended Mounting Hole

### NOTES:

- ALL SPECIFICATIONS ARE SUBJECT TO CHANGE WITHOUT NOTICE AT ANY TIME
- UNLESS OTHERWISE SPECIFIED ALL DIMENSIONS ARE NOMINAL.

UNLESS OTHERWISE SPECIFIED, DIMENSIONS ARE IN MILLIMETERS [INCHES]. UNLESS OTHERWISE SPECIFIED DIMENSIONAL TOLERANCES ARE: .XX ±0.13 [0.005"] X ±0.20 [0.008"] X ±0.50 [0.019"] ANGULAR TOLERANCES ARE: ALL= ±1° DO NOT SCALE DRAWING PROJECTION:
--

DRAWN:	L. Ma	09/08/2020
CHECKED:	J. Zhu	09/08/2020
APPROVED:	M. Dong	09/08/2020

TITLE:  
**Adapter, SMA Female to  
 SMA Female, 4 Hole Flange**



Cmppter Electronics Co., Ltd. [www.cmppter.com](http://www.cmppter.com)

PART No.:  
**A-SMAF-SMAF-061**

SIZE: A4	SCALE: 4:1	SHEET: 1/1	REV: C
-------------	---------------	---------------	-----------