

# TECHNICAL DATA

## Electrical

Impedance 50 Ω  
 Frequency range 0~3 GHz  
 Withstanding voltage 750V  
 Insulation resistance ≥5000MΩ

## Mechanical & Environmental

Durability (matings) >500  
 Temperature range -55 °C ~ +165 °C  
 RoHS Compliant Yes

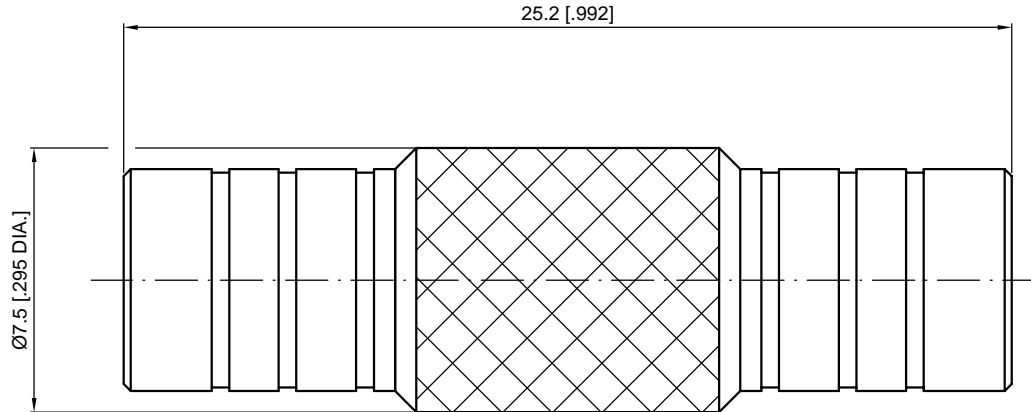
## Material & Finish

Body Brass, Gold-plated  
 Pin Contact Phosphor Bronze, Gold-plated  
 Insulator PTFE

## Interface Standards

SMB IEC-60169

REVISIONS				
REV	DESCRIPTION OF REVISION	ECN No.	DATE	APPROVED
A	INITIAL RELEASE	—	07/28/2020	M. Dong



1  
2  
3  
4  
5  
6

1  
2  
3  
4  
5  
6

7

NOTES:  
 1. ALL SPECIFICATIONS ARE SUBJECT TO CHANGE WITHOUT NOTICE AT ANY TIME  
 2. UNLESS OTHERWISE SPECIFIED ALL DIMENSIONS ARE NOMINAL.

UNLESS OTHERWISE SPECIFIED, DIMENSIONS ARE IN MILLIMETERS (INCHES). UNLESS OTHERWISE SPECIFIED DIMENSIONAL TOLERANCES ARE: .XX ±0.13 [0.005] X ±0.20 [0.008] X ±0.50 [0.019] ANGULAR TOLERANCES ARE: ALL= ±1° DO NOT SCALE DRAWING PROJECTION:	DRAWN:	L. Ma	07/28/2020
	CHECKED:	J. Zhu	07/28/2020
	APPROVED:	M. Dong	07/28/2020
TITLE:		Adapter, SMB Plug (Female Center Contact ) to SMB Plug (Female Center Contact )	

**CMP TER**®  
 Cmpter Electronics Co., Ltd. [www.cmpter.com](http://www.cmpter.com)

PART No.:  
**A-SMBM-SMBM-401**

SIZE: A4	SCALE: 5:1	SHEET: 1/1	REV: A
----------	------------	------------	--------