

REV	DESCRIPTION OF REVISION	ECN No.	BY	DATE	APPROVED
A	INITIAL RELEASE	—	H. Xiao	08/09/10	08/09/10

TECHNICAL DATA

Electrical data

Impedance	50 Ω
Frequency range	0~50 GHz
VSWR	1.15:1
Contact resistance	
-centre contact	≤3mΩ
-outer contact	≤2mΩ
Insulation resistance	≥3000MΩ

Mechanical data

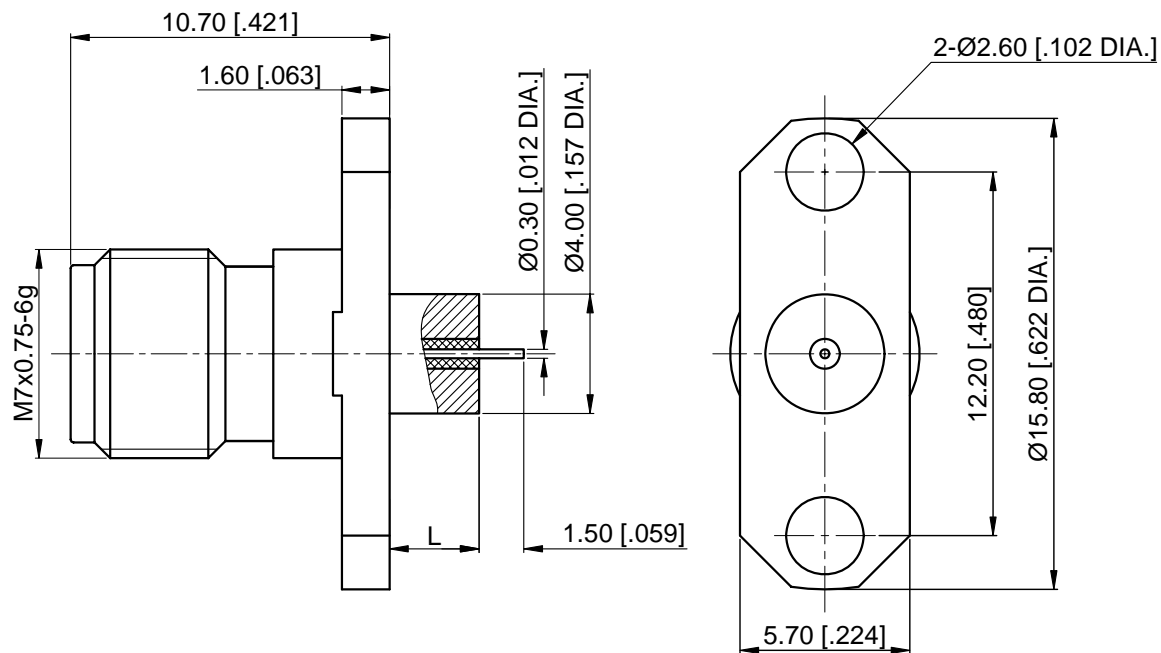
Temperature range	-55 °C ~ +165 °C
Durability (matings)	>500

Material data

Body	Stainless Steel (SU303), Passivated
Pin Contact	Beryllium Copper Alloy, Gold-plated
Insulator	PEI, PTFE

Interface Standards

2.4mm	IEEE STD 287-2007
-------	-------------------



Part Number	L
97-02-9E2-015A	1.4 [0.055]
97-02-9E2-015B	3 [0.118]

NOTES:

- ALL SPECIFICATIONS ARE SUBJECT TO CHANGE WITHOUT NOTICE AT ANY TIME
- CUSTOMER OUTLINE DRAWING FOR REFERENCE ONLY

DRAWN: H. Xiao 08/09/10
ENGINEER: YF. Zhu 08/09/10
APPROVED: M. Dong 08/09/10
TOLERANCE UNLESS OTHERWISE SPECIFIED
X ±0.50 [0.019"]
.X ±0.20 [0.008"]
.XX ±0.10 [0.004"]
ANGLES ±1°

TITLE:

2.4mm Straight Female,
Metal Through the Wall,
2 Hole Flange

PART No.: 97-02-9E2-015

CMPPTER®

www.cmppter.com



DIMENSIONS IN MILLIMETERS (mm)

SIZE:
A4

SCALE:
4:1

SHEET:
1/1

REV:
A