

REV	DESCRIPTION OF REVISION	ECN No.	BY	DATE	APPROVED
A	INITIAL RELEASE	—	H. Xiao	08/09/10	08/09/10

## TECHNICAL DATA

### Electrical data

Impedance	50 $\Omega$
Frequency range	0~50 GHz
VSWR	1.15:1
Contact resistance	
-centre contact	$\leq 3m\Omega$
-outer contact	$\leq 2m\Omega$
Insulation resistance	$\geq 3000M\Omega$

### Mechanical data

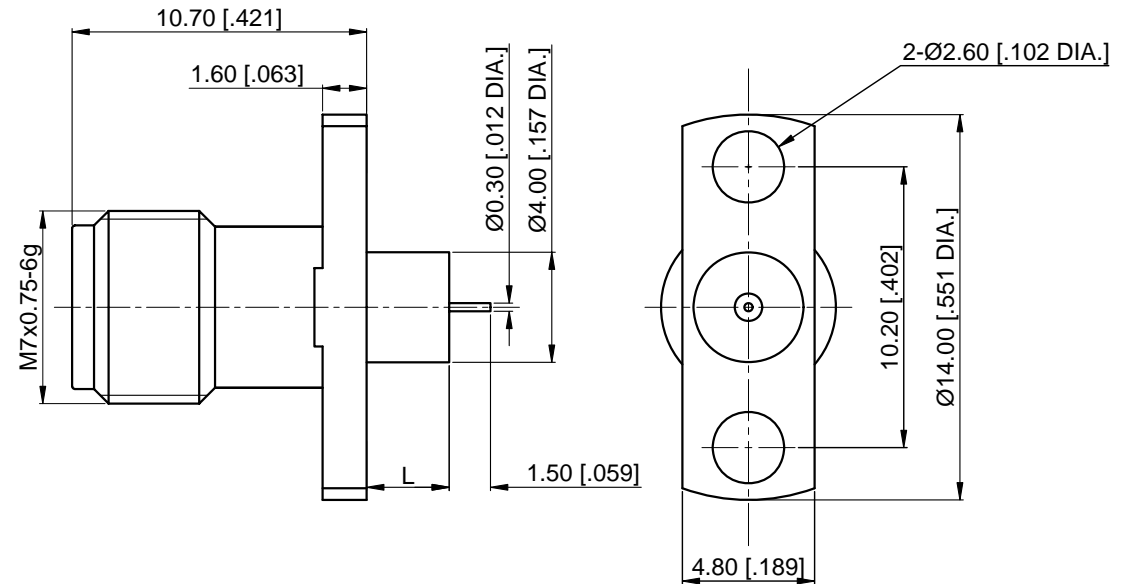
Temperature range	-55 °C ~ +165 °C
Durability (matings)	>500

### Material data

Body	Stainless Steel (SU303), Passivated
Pin Contact	Beryllium Copper Alloy, Gold-plated
Insulator	PEI, PTFE

### Interface Standards


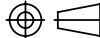
2.4mm	IEEE STD 287-2007
-------	-------------------



Part Number	L
97-02-9E2-016A	1.4 [.055]
97-02-9E2-016B	3 [.118]

#### NOTES:

- ALL SPECIFICATIONS ARE SUBJECT TO CHANGE WITHOUT NOTICE AT ANY TIME
- CUSTOMER OUTLINE DRAWING FOR REFERENCE ONLY

DRAWN: H. Xiao 08/09/10	TITLE: <b>2.4mm Straight Female, 2 Hole Flange</b>	 <a href="http://www.cmp ter.com">www.cmp ter.com</a>			
ENGINEER: YF. Zhu 08/09/10					
APPROVED: M. Dong 08/09/10		 DIMENSIONS IN MILLIMETERS (mm)			
TOLERANCE UNLESS OTHERWISE SPECIFIED	PART No.: 97-02-9E2-016	SIZE: A4	SCALE: 4:1	SHEET: 1/1	REV: A
X ±0.50 [.019"] .X ±0.20 [.008"] .XX ±0.10 [.004"] ANGLES ±1°					