

# TECHNICAL DATA

## Electrical

Impedance	50 Ω
Frequency range	0~50 GHz
VSWR	1.15:1
Contact resistance	
-centre contact	≤3mΩ
-outer contact	≤2mΩ
Insulation resistance	≥3000MΩ

## Mechanical & Environmental

Durability (matings)	>500
Temperature range	-55 °C ~ +165 °C
RoHS Compliant	Yes

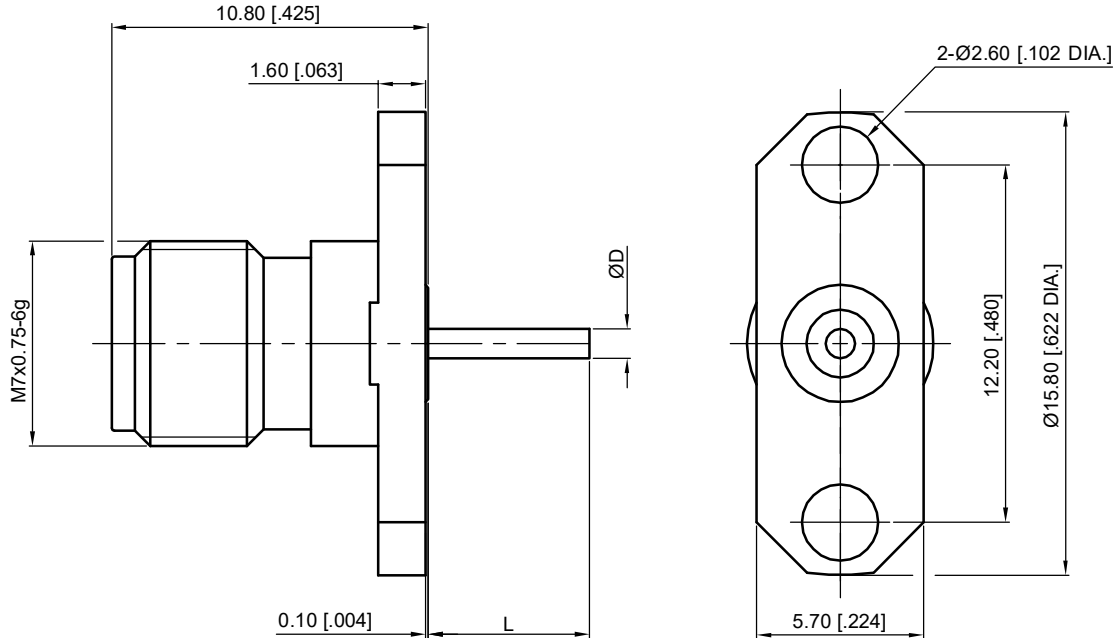
## Material & Finish

Body	Stainless Steel (SU303), Passivated
Pin Contact	Beryllium Copper Alloy, Gold-plated
Insulator	PEI , PTFE

## Interface Standards

2.4mm	IEEE STD 287-2007
-------	-------------------

REVISIONS				
REV	DESCRIPTION OF REVISION	ECN No.	DATE	APPROVED
A	INITIAL RELEASE	---	08/10/2010	M. Dong
B	ADD TYPE F & G	---	10/18/2016	M. Dong



Part Number	D	L
97-02-9E2-025 A	0.75 [0.029]	9 [0.354]
97-02-9E2-025 B	0.86 [0.034]	8.75 [0.344]
97-02-9E2-025 C	1 [0.040]	5.5 [0.216]
97-02-9E2-025 D	1.04 [0.041]	6.34 [0.250]
97-02-9E2-025 E	1.2 [0.047]	3 [0.118]
97-02-9E2-025 F	0.64 [0.025]	10 [0.394]
97-02-9E2-025 G	0.64 [0.025]	6.84 [0.269]

### NOTES:

- ALL SPECIFICATIONS ARE SUBJECT TO CHANGE WITHOUT NOTICE AT ANY TIME
- UNLESS OTHERWISE SPECIFIED ALL DIMENSIONS ARE NOMINAL.

UNLESS OTHERWISE SPECIFIED, DIMENSIONS ARE IN MILLIMETERS (INCHES).  
UNLESS OTHERWISE SPECIFIED DIMENSIONAL TOLERANCES ARE:

.XX	±0.13 [0.005"]
.X	±0.20 [0.008"]
X	±0.50 [0.019"]

ANGULAR TOLERANCES ARE: ALL= ±1°

DO NOT SCALE DRAWING

PROJECTION:



DRAWN:	L. Ma	10/18/2016
CHECKED:	J. Zhu	10/18/2016
APPROVED:	M. Dong	10/18/2016

TITLE:  
**2.4mm Straight Female,  
Air Line Through the Wall,  
2 Hole Flange**



Cmppter Electronics Co., Ltd. [www.cmppter.com](http://www.cmppter.com)

PART No.:  
**97-02-9E2-025**

SIZE: A4	SCALE: 4:1	SHEET: 1/1	REV: B
-------------	---------------	---------------	-----------