

TECHNICAL DATA

Electrical

Impedance	50 Ω
Frequency range	0~50 GHz
VSWR	1.15:1
Contact resistance	
-centre contact	≤3mΩ
-outer contact	≤2mΩ
Insulation resistance	≥3000MΩ

Mechanical & Environmental

Durability (matings)	>500
Temperature range	-55 °C ~ +165 °C
RoHS Compliant	Yes

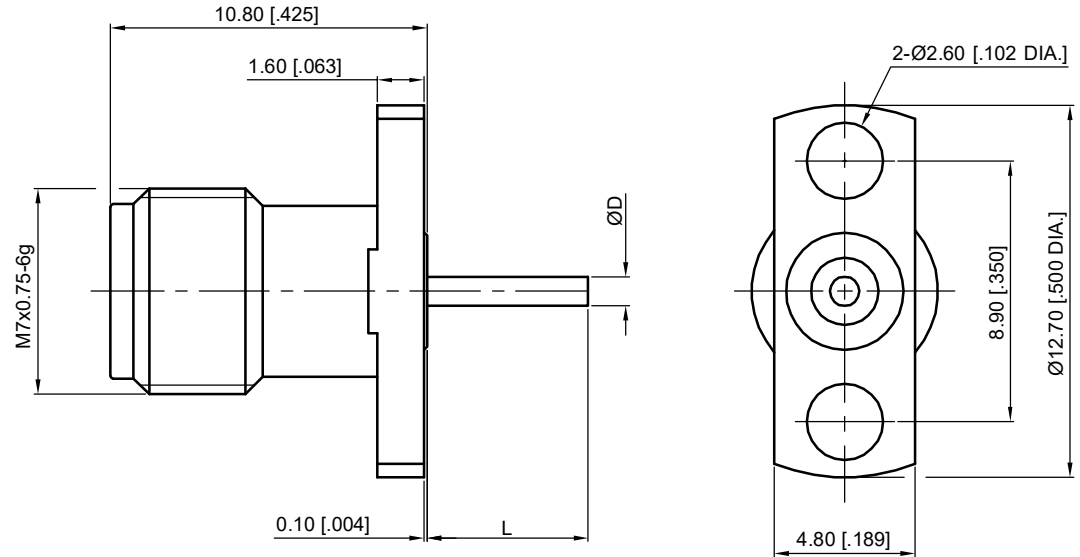
Material & Finish

Body	Stainless Steel (SU303), Passivated
Pin Contact	Beryllium Copper Alloy, Gold-plated
Insulator	PEI , PTFE

Interface Standards

2.4mm	IEEE STD 287-2007
-------	-------------------

REVISIONS				
REV	DESCRIPTION OF REVISION	ECN No.	DATE	APPROVED
A	INITIAL RELEASE	---	08/10/2010	M. Dong
B	ADD TYPE F & G	---	10/18/2016	M. Dong



Part Number	D	L
97-02-9E2-027 A	0.75 [0.029]	9 [0.354]
97-02-9E2-027 B	0.86 [0.034]	8.75 [0.344]
97-02-9E2-027 C	1 [0.040]	5.5 [0.216]
97-02-9E2-027 D	1.04 [0.041]	6.34 [0.250]
97-02-9E2-027 E	1.2 [0.047]	3 [0.118]
97-02-9E2-027 F	0.64 [0.025]	10 [0.394]
97-02-9E2-027 G	0.64 [0.025]	6.84 [0.269]

- NOTES:
- ALL SPECIFICATIONS ARE SUBJECT TO CHANGE WITHOUT NOTICE AT ANY TIME
 - UNLESS OTHERWISE SPECIFIED ALL DIMENSIONS ARE NOMINAL.

UNLESS OTHERWISE SPECIFIED, DIMENSIONS ARE IN MILLIMETERS (INCHES).
 UNLESS OTHERWISE SPECIFIED DIMENSIONAL TOLERANCES ARE:
 .XX ±0.13 [0.005]
 .X ±0.20 [0.008]
 X ±0.50 [0.019]
 ANGULAR TOLERANCES ARE: ALL= ±1°
 DO NOT SCALE DRAWING
 PROJECTION:

DRAWN:	L. Ma	10/18/2016
CHECKED:	J. Zhu	10/18/2016
APPROVED:	M. Dong	10/18/2016

TITLE:
**2.4mm Straight Female,
 Air Line Through the Wall,
 2 Hole Flange**

CMPPTER®
 Cmppter Electronics Co., Ltd. www.cmppter.com

PART No.:
97-02-9E2-027

SIZE: A4	SCALE: 4:1	SHEET: 1/1	REV: B
-------------	---------------	---------------	-----------