

# TECHNICAL DATA

## Electrical

Impedance	50 Ω
Frequency range	0~50 GHz
VSWR	1.15:1
Contact resistance	
-centre contact	≤3mΩ
-outer contact	≤2mΩ
Insulation resistance	≥3000MΩ

## Mechanical & Environmental

Durability (matings)	>500
Temperature range	-55 °C ~ +165 °C
RoHS Compliant	Yes

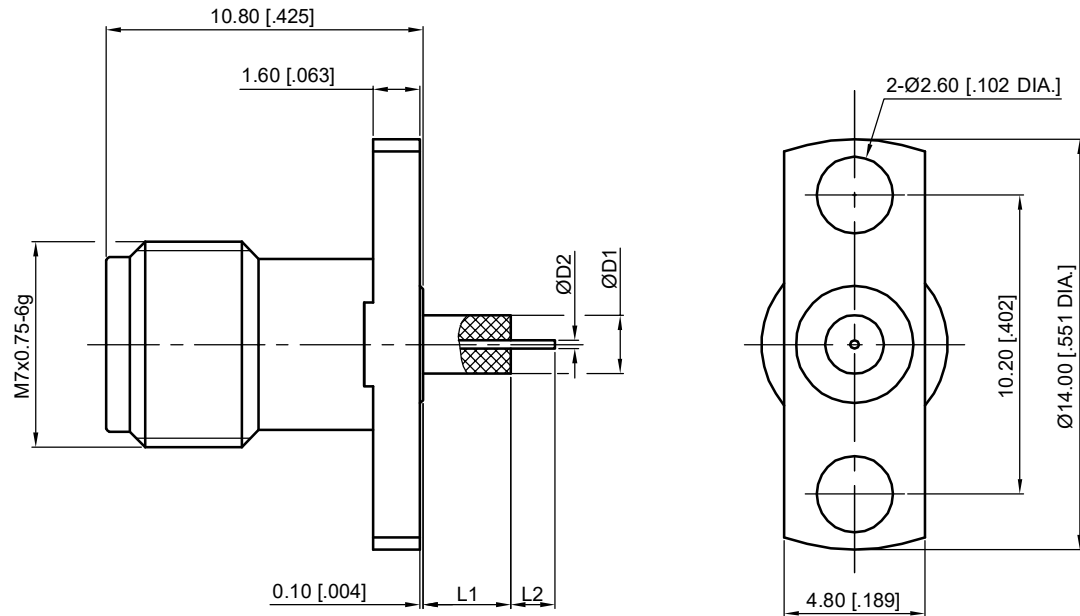
## Material & Finish

Body	Stainless Steel (SU303), Passivated
Pin Contact	Beryllium Copper Alloy, Gold-plated
Insulator	PEI , PTFE

## Interface Standards

2.4mm	IEEE STD 287-2007
-------	-------------------

REVISIONS				
REV	DESCRIPTION OF REVISION	ECN No.	DATE	APPROVED
A	INITIAL RELEASE	---	08/10/2010	M. Dong
B	ADD TYPE D	---	10/18/2016	M. Dong



Part Number	D1	D2	L1	L2
97-02-9E7-021 A	1.67 [.066]	0.3 [.012]	1.4 [.055]	1.5 [.059]
97-02-9E7-021 B	1.67 [.066]	0.3 [.012]	3 [.118]	1.5 [.059]
97-02-9E7-021 C	2 [.078]	0.6 [.024]	6.35 [.250]	1.27 [.050]
97-02-9E7-021 D	2 [.078]	0.6 [.024]	5.1 [.200]	1.9 [.075]

### NOTES:

- ALL SPECIFICATIONS ARE SUBJECT TO CHANGE WITHOUT NOTICE AT ANY TIME
- UNLESS OTHERWISE SPECIFIED ALL DIMENSIONS ARE NOMINAL.

UNLESS OTHERWISE SPECIFIED, DIMENSIONS ARE IN MILLIMETERS (INCHES).  
UNLESS OTHERWISE SPECIFIED DIMENSIONAL TOLERANCES ARE:

.XX ±0.13 [.005]  
.X ±0.20 [.008]  
X ±0.50 [.019]

ANGULAR TOLERANCES ARE: ALL= ±1°

DO NOT SCALE DRAWING

PROJECTION:



DRAWN:	L. Ma	10/18/2016
CHECKED:	J. Zhu	10/18/2016
APPROVED:	M. Dong	10/18/2016

TITLE:  
**2.4mm Straight Female,  
Insulator Through the Wall,  
4 Hole Flange**



Cmppter Electronics Co., Ltd. [www.cmppter.com](http://www.cmppter.com)

PART No.:  
**97-02-9E7-021**

SIZE: A4	SCALE: 4:1	SHEET: 1/1	REV: B
-------------	---------------	---------------	-----------