

# TECHNICAL DATA

## Electrical

Impedance	50 Ω
Frequency range	0~50 GHz
VSWR	1.15:1
Contact resistance	
-centre contact	≤3mΩ
-outer contact	≤2mΩ
Insulation resistance	≥3000MΩ

## Mechanical & Environmental

Durability (matings)	>500
Temperature range	-55 °C ~ +165 °C
RoHS Compliant	Yes

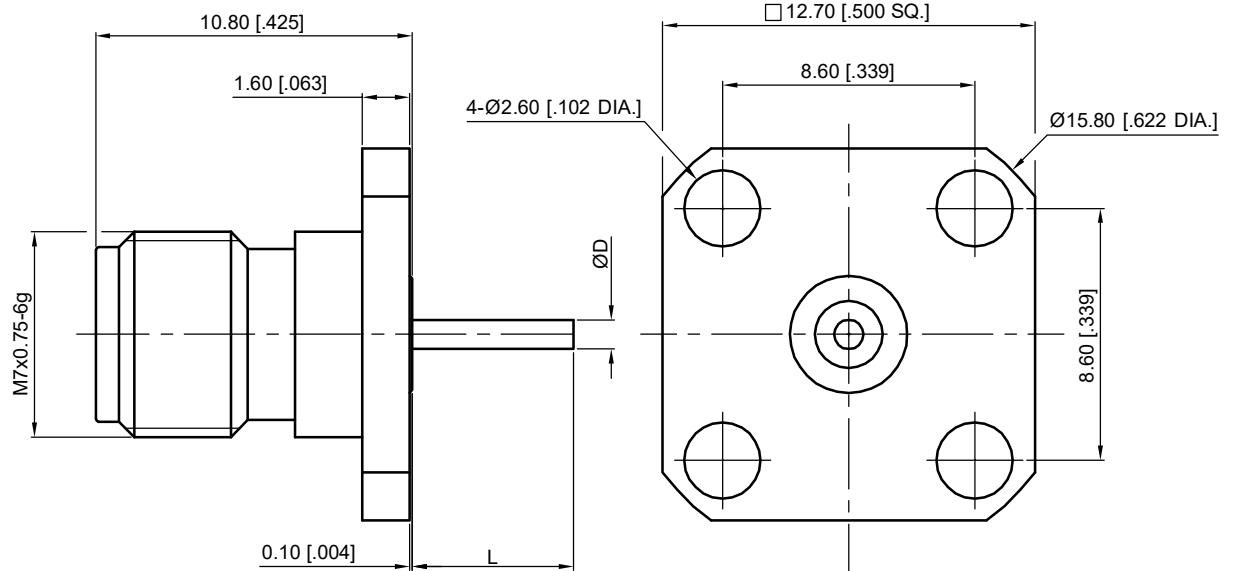
## Material & Finish

Body	Stainless Steel (SU303), Passivated
Pin Contact	Beryllium Copper Alloy, Gold-plated
Insulator	PEI , PTFE

## Interface Standards

2.4mm	IEEE STD 287-2007
-------	-------------------

Part Number	D	L
97-02-9F2-023 A	0.75 [.029]	9 [.354]
97-02-9F2-023B	0.86 [.034]	8.75 [.344]
97-02-9F2-023C	1 [.040]	5.5 [.216]
97-02-9F2-023D	1.04 [.041]	6.34 [.250]
97-02-9F2-023E	1.2 [.047]	3 [.118]
97-02-9F2-023F	0.64 [.025]	10 [.394]
97-02-9F2-023G	0.64 [.025]	6.84 [.269]



REVISIONS				
REV	DESCRIPTION OF REVISION	ECN No.	DATE	APPROVED
A	INITIAL RELEASE	---	08/10/2010	M. Dong
B	ADD TYPE F & G	---	10/18/2016	M. Dong

### NOTES:

- ALL SPECIFICATIONS ARE SUBJECT TO CHANGE WITHOUT NOTICE AT ANY TIME
- UNLESS OTHERWISE SPECIFIED ALL DIMENSIONS ARE NOMINAL.

UNLESS OTHERWISE SPECIFIED, DIMENSIONS ARE IN MILLIMETERS (INCHES). UNLESS OTHERWISE SPECIFIED DIMENSIONAL TOLERANCES ARE: .XX ±0.13 [.005] .X ±0.20 [.008] X ±0.50 [.019] ANGULAR TOLERANCES ARE: ALL= ±1° DO NOT SCALE DRAWING	DRAWN: L. Ma 10/18/2016 CHECKED: J. Zhu 10/18/2016 APPROVED: M. Dong 10/18/2016
PROJECTION:	

TITLE:	2.4mm Straight Female, Air Line Through the Wall, 4 Hole Flange
--------	---



Cmppter Electronics Co., Ltd. [www.cmppter.com](http://www.cmppter.com)

PART No.: 97-02-9F2-023			
SIZE: A4	SCALE: 4:1	SHEET: 1/1	REV: B