

REVISIONS				
REV	DESCRIPTION OF REVISION	ECN No.	DATE	APPROVED
A	INITIAL RELEASE	---	07/21/2012	M. Dong
B	ADD TYPE D	---	10/18/2016	M. Dong

TECHNICAL DATA

Electrical

Impedance	50 Ω
Frequency range	0~50 GHz
VSWR	1.15:1
Contact resistance	
-centre contact	≤3mΩ
-outer contact	≤2mΩ
Insulation resistance	≥3000MΩ

Mechanical & Environmental

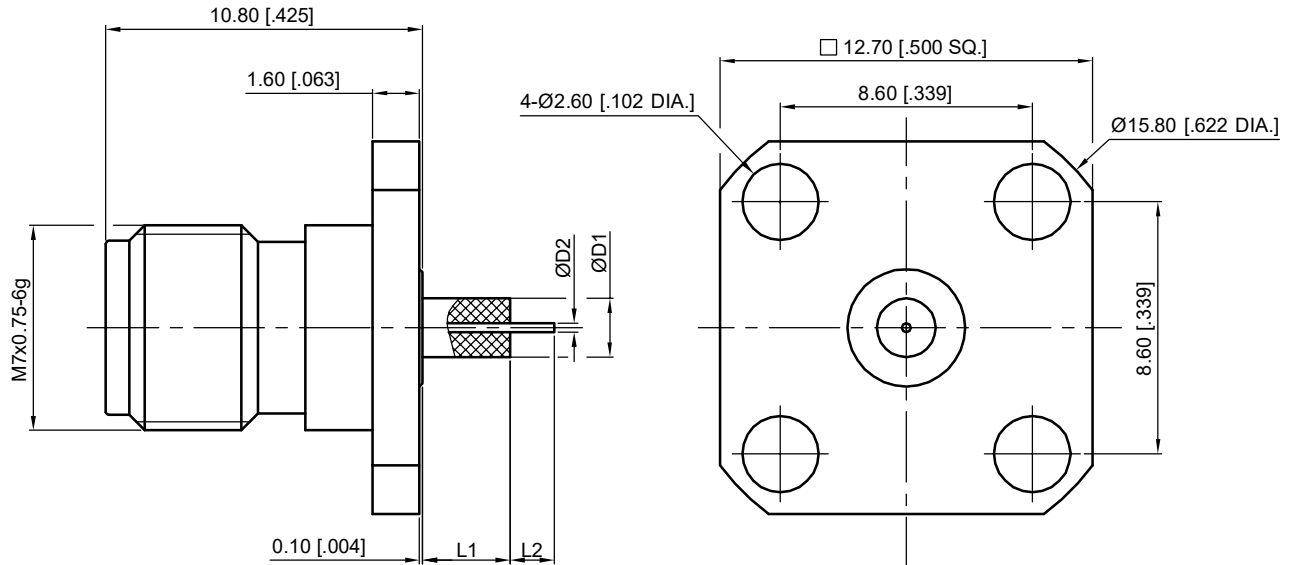
Durability (matings)	>500
Temperature range	-55 °C ~ +165 °C
RoHS Compliant	Yes

Material & Finish

Body	Stainless Steel (SU303), Passivated
Pin Contact	Beryllium Copper Alloy, Gold-plated
Insulator	PEI , PTFE

Interface Standards

2.4mm	IEEE STD 287-2007
-------	-------------------



Part Number	D1	D2	L1	L2
97-02-9F7-018 A	1.67 [0.066]	0.3 [0.012]	1.4 [0.055]	1.5 [0.059]
97-02-9F7-018B	1.67 [0.066]	0.3 [0.012]	3 [0.118]	1.5 [0.059]
97-02-9F7-018C	2 [0.078]	0.6 [0.024]	6.35 [0.250]	1.27 [0.050]
97-02-9F7-018D	2 [0.078]	0.6 [0.024]	5.1 [0.200]	1.9 [0.075]

UNLESS OTHERWISE SPECIFIED, DIMENSIONS ARE IN MILLIMETERS (INCHES). UNLESS OTHERWISE SPECIFIED DIMENSIONAL TOLERANCES ARE: .XX ±0.13 [0.005] .X ±0.20 [0.008] X ±0.50 [0.019] ANGULAR TOLERANCES ARE: ALL= ±1° DO NOT SCALE DRAWING PROJECTION:	DRAWN: L. Ma CHECKED: J. Zhu APPROVED: M. Dong	10/18/2016 10/18/2016 10/18/2016
--	--	--

TITLE: 2.4mm Straight Female, Insulator Through the Wall, 4 Hole Flange
--

 Cmppter Electronics Co., Ltd. www.cmppter.com			
PART No.: 97-02-9F7-018			
SIZE: A4	SCALE: 4:1	SHEET: 1/1	REV: B

- NOTES:
- ALL SPECIFICATIONS ARE SUBJECT TO CHANGE WITHOUT NOTICE AT ANY TIME
 - UNLESS OTHERWISE SPECIFIED ALL DIMENSIONS ARE NOMINAL.