

TECHNICAL DATA

Electrical

Impedance 50 Ω
 Frequency range 0~50 GHz

Mechanical & Environmental

Durability (matings) >500
 Temperature range -55 °C ~ +125 °C
 RoHS Compliant Yes

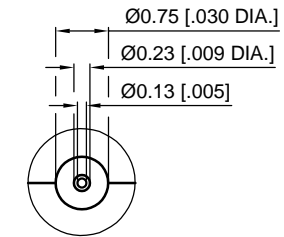
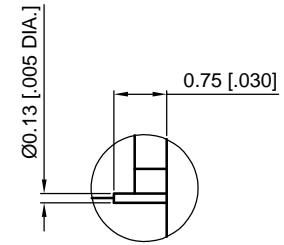
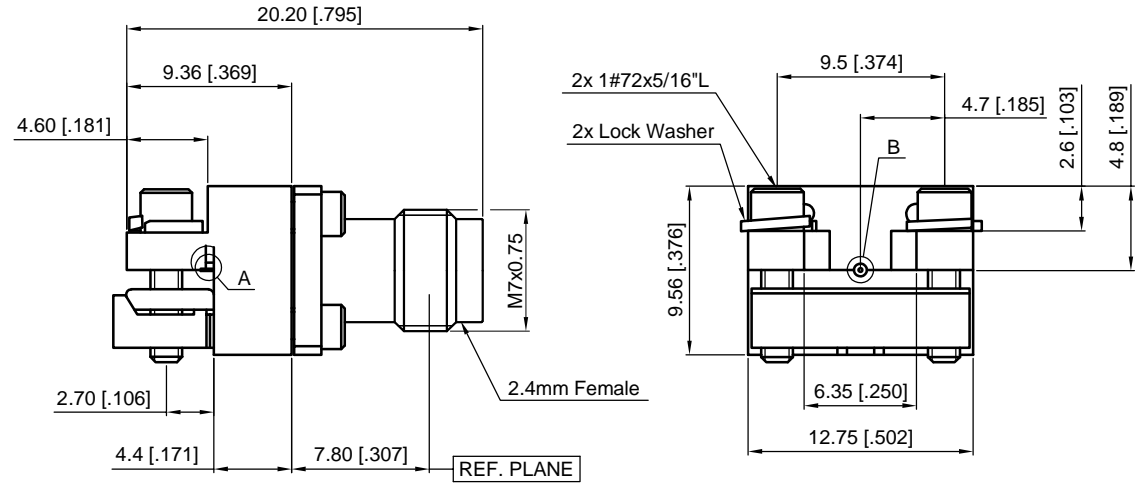
Material & Finish

Body Stainless Steel (SU303), Passivated
 Pin Contact Beryllium Copper Alloy, Gold-plated
 Insulator PTFE & PEI

Interface Standards

2.4mm IEEE STD 287-2007

REVISIONS				
REV	DESCRIPTION OF REVISION	ECN No.	DATE	APPROVED
A	INITIAL RELEASE	---	06/14/2020	M. Dong
B	DETAIL " A " MARK CORRECTED	---	11/09/2021	M. Dong



DETAIL A

DETAIL B

NOTES:
 1. ALL SPECIFICATIONS ARE SUBJECT TO CHANGE WITHOUT NOTICE AT ANY TIME
 2. UNLESS OTHERWISE SPECIFIED ALL DIMENSIONS ARE NOMINAL.

UNLESS OTHERWISE SPECIFIED, DIMENSIONS ARE IN MILLIMETERS (INCHES). UNLESS OTHERWISE SPECIFIED DIMENSIONAL TOLERANCES ARE: .XX ±0.13 [.005"] X ±0.20 [.008"] X ±0.50 [.019"] ANGULAR TOLERANCES ARE: ALL=±1° DO NOT SCALE DRAWING PROJECTION:	DRAWN:	L. Ma	06/14/2020
	CHECKED:	J. Zhu	06/14/2020
	APPROVED:	M. Dong	06/14/2020
	TITLE:	2.4mm Female End Launch Connector	

CMPPTER®
 Cmppter Electronics Co., Ltd. www.cmppter.com

PART No.: **EL-2.4F-014**

SIZE: A4	SCALE: 4:1	SHEET: 1/1	REV: B
----------	------------	------------	--------