

REVISIONS

REV	DESCRIPTION OF REVISION	ECN No.	DATE	APPROVED
A	INITIAL RELEASE	---	03/15/2007	M. Dong
B	DIMENSIONS CHANGED	---	11/14/2012	M. Dong
C	MOUNTING HOLE CHANGED	---	01/14/2014	M. Dong
D	DIMENSIONS CHANGED	---	03/17/2017	M. Dong

TECHNICAL DATA

Electrical

Impedance 50 Ω
 Frequency range 0~6 GHz
 Voltage Rating 250 V rms
 Insulation resistance ≥1000MΩ

Mechanical & Environmental

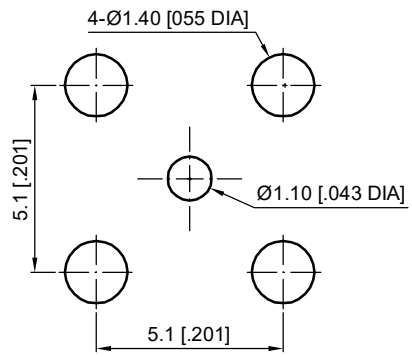
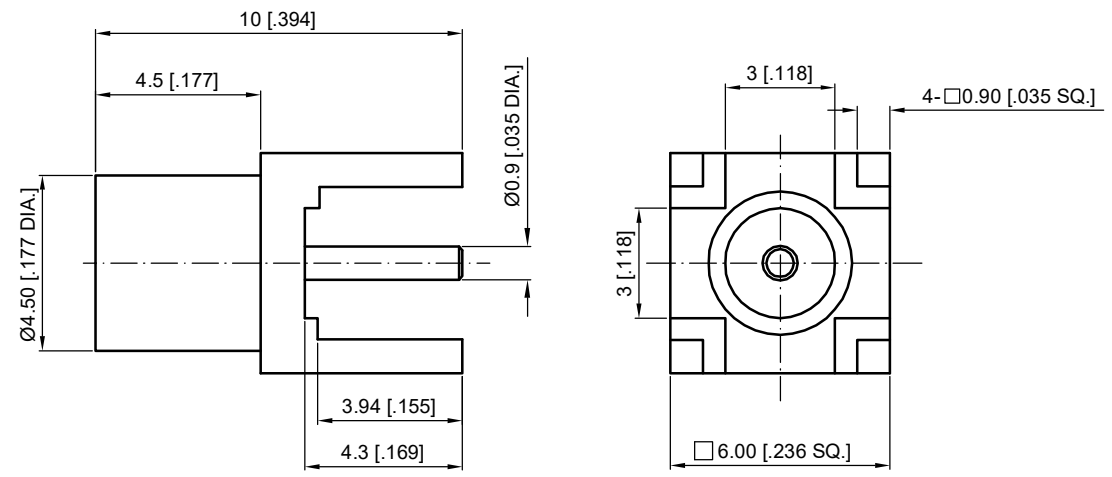
Durability (matings) >500
 Temperature range -55 °C ~ +165 °C
 RoHS Compliant Yes

Material & Finish

Body Brass, Gold-plated
 Pin Contact Phosphor Bronze, Gold-plated
 Insulator PTFE

Interface Standards

MCX IEC-61169



Recommended Mounting Hole

- NOTES:
- ALL SPECIFICATIONS ARE SUBJECT TO CHANGE WITHOUT NOTICE AT ANY TIME
 - UNLESS OTHERWISE SPECIFIED ALL DIMENSIONS ARE NOMINAL.

UNLESS OTHERWISE SPECIFIED, DIMENSIONS ARE IN MILLIMETERS (INCHES).
 UNLESS OTHERWISE SPECIFIED DIMENSIONAL TOLERANCES ARE:
 .XX ±0.13 [0.005"]
 .X ±0.20 [0.008"]
 X ±0.50 [0.019"]
 ANGULAR TOLERANCES ARE: ALL= ±1°
 DO NOT SCALE DRAWING
 PROJECTION:

DRAWN:	L. Ma	03/17/2017
CHECKED:	J. Zhu	03/17/2017
APPROVED:	M. Dong	03/17/2017

TITLE:
MCX Straight Female PCB Mount

CMP TER[®]
 Cmptter Electronics Co., Ltd. www.cmptter.com

PART No.:
30-02-5L2-013

SIZE: A4	SCALE: 5:1	SHEET: 1/1	REV: D
-------------	---------------	---------------	-----------