

REVISIONS				
REV	DESCRIPTION OF REVISION	ECN No.	DATE	APPROVED
A	INITIAL RELEASE	—	08/13/2014	M. Dong

## TECHNICAL DATA

### Electrical

Impedance 50 Ω  
 Frequency range 0~6 GHz  
 Voltage Rating 250 V rms  
 Insulation resistance ≥1000MΩ

### Mechanical & Environmental

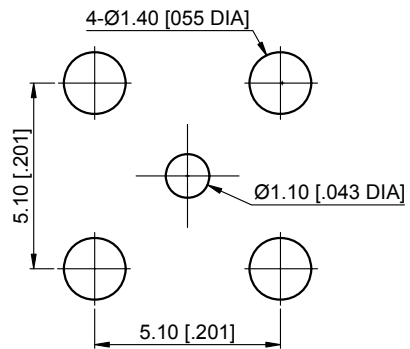
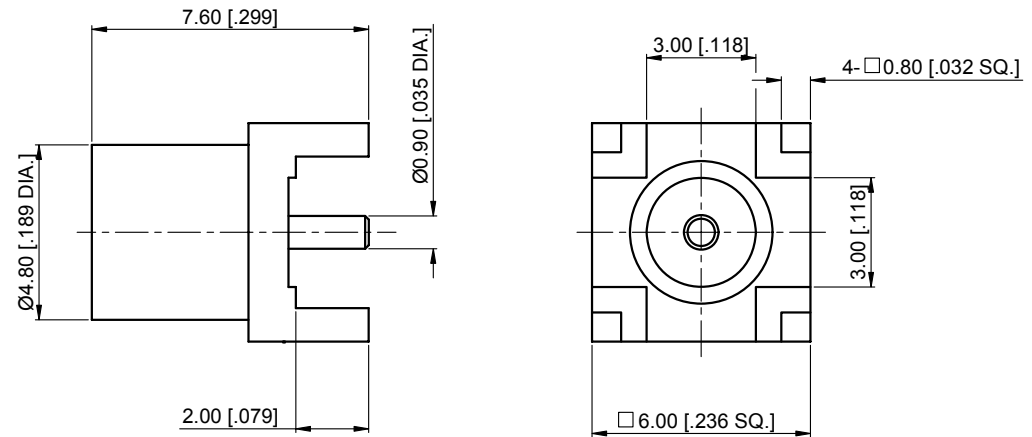
Durability (matings) >500  
 Temperature range -55 °C ~ +165 °C  
 RoHS Compliant Yes

### Material & Finish

Body Brass, Gold-plated  
 Pin Contact Beryllium Copper Alloy, Gold-plated  
 Insulator PTFE

### Interface Standards

MCX IEC-61169



Recommended Mounting Hole

### NOTES:

- ALL SPECIFICATIONS ARE SUBJECT TO CHANGE WITHOUT NOTICE AT ANY TIME
- UNLESS OTHERWISE SPECIFIED ALL DIMENSIONS ARE NOMINAL.

UNLESS OTHERWISE SPECIFIED, DIMENSIONS ARE IN MILLIMETERS (INCHES).  
 UNLESS OTHERWISE SPECIFIED DIMENSIONAL TOLERANCES ARE:

.XX ±0.13 [0.005"]  
 X ±0.20 [0.008"]  
 X ±0.50 [0.019"]

ANGULAR TOLERANCES ARE: ALL=±1°

DO NOT SCALE DRAWING

PROJECTION:

DRAWN:	L. Ma	08/13/2014
CHECKED:	J. Zhu	08/13/2014
APPROVED:	M. Dong	08/13/2014

TITLE:

MCX Straight Female for PCB



Cmppter Electronics Co., Ltd. [www.cmppter.com](http://www.cmppter.com)

PART No.: 30-02-5L2-029

SIZE: A4	SCALE: 5:1	SHEET: 1/1	REV: A
----------	------------	------------	--------