

## TECHNICAL DATA

### Electrical

Impedance	50 Ω
Frequency range	0~6 GHz
Voltage Rating	250 V rms
Insulation resistance	≥1000MΩ

### Mechanical & Environmental

Durability (matings)	>500
Temperature range	-55 °C ~ +165 °C
RoHS Compliant	Yes

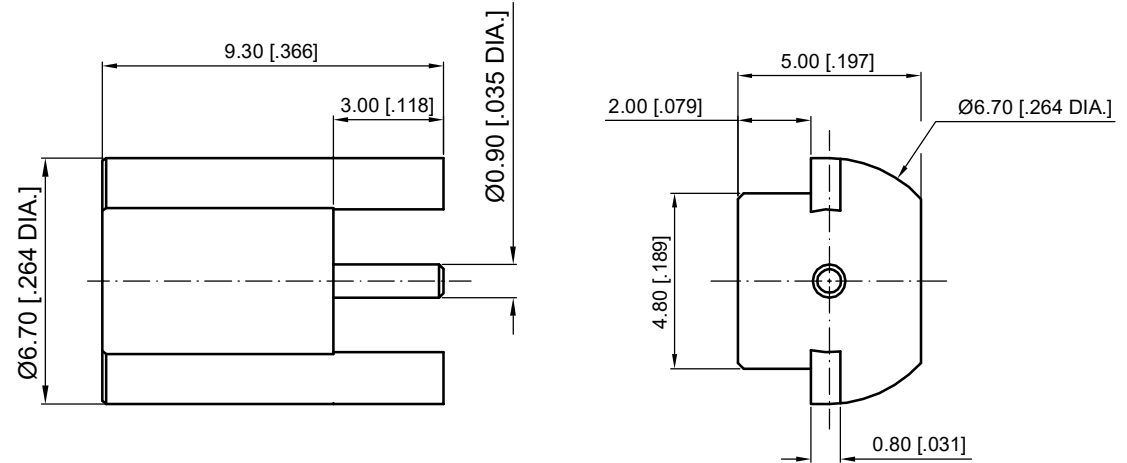
### Material & Finish

Body	Brass, Gold-plated
Pin Contact	Phosphor Bronze, Gold-plated
Insulator	PTFE

### Interface Standards

MCX	IEC-61169
-----	-----------

REVISIONS				
REV	DESCRIPTION OF REVISION	ECN No.	DATE	APPROVED
A	INITIAL RELEASE	---	05/08/2011	M. Dong
B	DIMENSIONS CHANGED	---	04/17/2016	M. Dong



#### NOTES:

- ALL SPECIFICATIONS ARE SUBJECT TO CHANGE WITHOUT NOTICE AT ANY TIME
- UNLESS OTHERWISE SPECIFIED ALL DIMENSIONS ARE NOMINAL.

UNLESS OTHERWISE SPECIFIED, DIMENSIONS ARE IN MILLIMETERS [INCHES].  
UNLESS OTHERWISE SPECIFIED DIMENSIONAL TOLERANCES ARE:  
.XX ±0.13 [005"]  
.X ±0.20 [008"]  
X ±0.50 [019"]

ANGULAR TOLERANCES ARE: ALL= ±1°

DO NOT SCALE DRAWING

PROJECTION:



DRAWN:	L. Ma	04/17/2016
CHECKED:	J. Zhu	04/17/2016
APPROVED:	M. Dong	04/17/2016

TITLE:

**MCX Straight Female PCB Mount**

**CMPPTER**<sup>®</sup>

Cmppter Electronics Co., Ltd. [www.cmppter.com](http://www.cmppter.com)

PART No.:  
**30-02-6L2-018**

SIZE: A4	SCALE: 5:1	SHEET: 1/1	REV: B
-------------	---------------	---------------	-----------