

REVISIONS

REV	DESCRIPTION OF REVISION	ECN No.	DATE	APPROVED
A	INITIAL RELEASE	---	05/15/2007	M. Dong
B	STRUCTURE CHANGED	---	03/14/2011	M. Dong

TECHNICAL DATA

Electrical

Impedance 50 Ω
 Frequency range 0~6 GHz
 Voltage Rating 250 V rms
 Insulation resistance ≥1000MΩ

Mechanical & Environmental

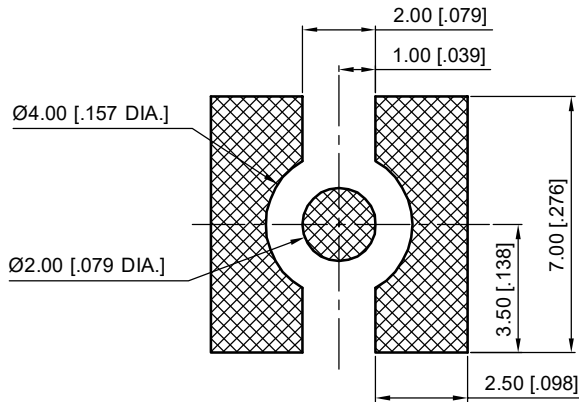
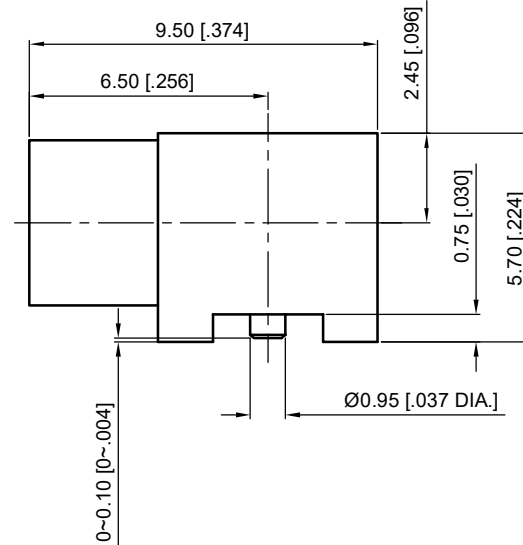
Durability (matings) >500
 Temperature range -55 °C ~ +165 °C
 RoHS Compliant Yes

Material & Finish

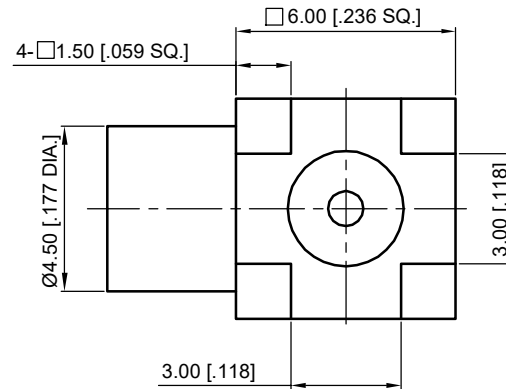
Body Brass, Gold-plated
 Pin Contact Phosphor Bronze, Gold-plated
 Insulator PTFE

Interface Standards

MCX IEC-61169



Recommended Soldering Pads

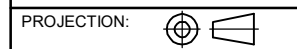


- NOTES:
- ALL SPECIFICATIONS ARE SUBJECT TO CHANGE WITHOUT NOTICE AT ANY TIME
 - UNLESS OTHERWISE SPECIFIED ALL DIMENSIONS ARE NOMINAL.

UNLESS OTHERWISE SPECIFIED, DIMENSIONS ARE IN MILLIMETERS (INCHES).
 UNLESS OTHERWISE SPECIFIED DIMENSIONAL TOLERANCES ARE:
 .XX ±0.13 [.005"]
 .X ±0.20 [.008"]
 X ±0.50 [.019"]

ANGULAR TOLERANCES ARE: ALL= ±1°

DO NOT SCALE DRAWING



DRAWN:	L. Ma	03/14/2011
CHECKED:	J. Zhu	03/14/2011
APPROVED:	M. Dong	03/14/2011

TITLE:
MCX Jack Right Angle Solder Attachment Surface Mount PCB

CMP TER®
 Cmpter Electronics Co., Ltd. www.cmpter.com

PART No.:
30-12-6L2-015

SIZE: A4	SCALE: 5:1	SHEET: 1/1	REV: B
-------------	---------------	---------------	-----------