

TECHNICAL DATA

Electrical

Impedance	50 Ω
Frequency range	0~ 6 GHz
Voltage Rating	500 V rms
Insulation resistance	≥1000MΩ

Mechanical & Environmental

Durability (matings)	>500
Temperature range	-55 °C ~ +155 °C
RoHS Compliant	Yes

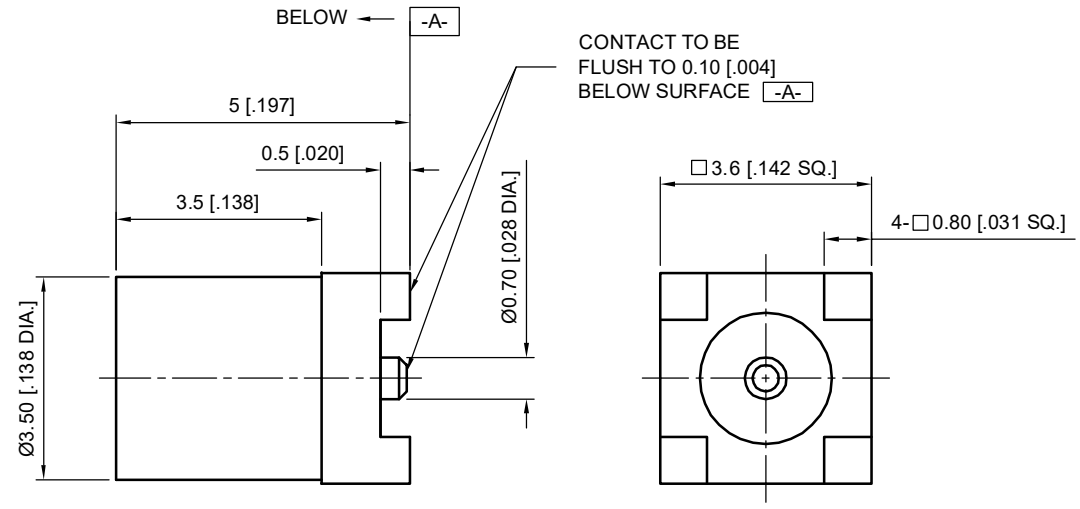
Material & Finish

Body	Brass, Gold-plated
Pin Contact	Beryllium Copper Alloy, Gold-plated
Insulator	PTFE

Interface Standards

MMCX	BS-EN-122340
------	--------------

REVISIONS				
REV	DESCRIPTION OF REVISION	ECN No.	DATE	APPROVED
A	INITIAL RELEASE	---	10/12/2015	M. Dong
B	DIMENSIONS CHANGED	---	03/18/2016	M. Dong



1
2
3
4
5
6
7

1
2
3
4
5
6
7

NOTES:
 1. ALL SPECIFICATIONS ARE SUBJECT TO CHANGE WITHOUT NOTICE AT ANY TIME
 2. UNLESS OTHERWISE SPECIFIED ALL DIMENSIONS ARE NOMINAL.

UNLESS OTHERWISE SPECIFIED, DIMENSIONS ARE IN MILLIMETERS [INCHES]. UNLESS OTHERWISE SPECIFIED DIMENSIONAL TOLERANCES ARE: .XX ±0.13 [0.005"] .X ±0.20 [0.008"] X ±0.50 [0.019"] ANGULAR TOLERANCES ARE: ALL= ±1° DO NOT SCALE DRAWING PROJECTION:

DRAWN:	L. Ma	03/18/2016
CHECKED:	J. Zhu	03/18/2016
APPROVED:	M. Dong	03/18/2016

TITLE: MMCX Straight Female PCB SMT Mount

CMPPTER®
 Cmppter Electronics Co., Ltd. www.cmppter.com

PART No.:
31-02-6L2-030

SIZE: A4	SCALE: 5:1	SHEET: 1/1	REV: B
-------------	---------------	---------------	-----------

A B C D E F G H I J