

TECHNICAL DATA

Electrical

Impedance 50 Ω
 Frequency range 0~3 GHz
 Working voltage ≤170 V rms, 50Hz(at sea level)
 Insulation resistance ≥1000MΩ

Mechanical & Environmental

Durability (matings) >500
 Temperature range -55 °C ~ +155 °C
 RoHS Compliant Yes

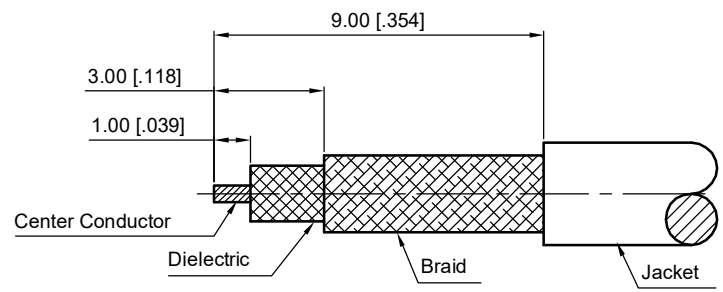
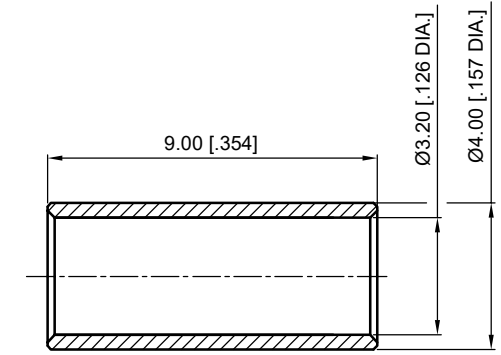
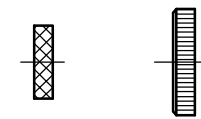
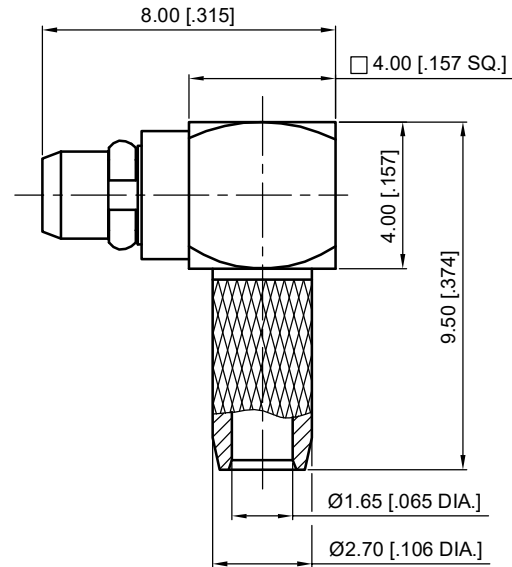
Material & Finish

Body Brass, See Schedule
 Pin Contact Brass, Gold-plated
 Crimp Ferrule Copper, Nickel-plated
 Insulator PTFE

Interface Standards

MMCX BS-EN-122340

REVISIONS				
REV	DESCRIPTION OF REVISION	ECN No.	DATE	APPROVED
A	INITIAL RELEASE	—	11/07/2018	M. Dong



Cable Stripping Dimensions

1. CRIMP FERRULE
 HEX.CRIMP TOOL SIZE: 3.25 [.128]

- NOTES:
- ALL SPECIFICATIONS ARE SUBJECT TO CHANGE WITHOUT NOTICE AT ANY TIME
 - UNLESS OTHERWISE SPECIFIED ALL DIMENSIONS ARE NOMINAL.

UNLESS OTHERWISE SPECIFIED, DIMENSIONS ARE IN MILLIMETERS (INCHES).
 UNLESS OTHERWISE SPECIFIED DIMENSIONAL TOLERANCES ARE:

.XX	±0.13 [.005"]
.X	±0.20 [.008"]
X	±0.50 [.019"]

ANGULAR TOLERANCES ARE: ALL= ±1°

DO NOT SCALE DRAWING

PROJECTION:

DRAWN:	L. Ma	11/07/2018
CHECKED:	J. Zhu	11/07/2018
APPROVED:	M. Dong	11/07/2018

TITLE:
**MMCX Right Angle Male Crimp
 for LMR100/RG174/RG316 Cable**

CMP TER[®]
 Cmpter Electronics Co., Ltd. www.cmpter.com

PART No.:
31-13-1M00-040

SIZE: A4	SCALE: 5:1	SHEET: 1/1	REV: A
-------------	---------------	---------------	-----------