

REV	DESCRIPTION OF REVISION	ECN No.	BY	DATE	APPROVED
A	INITIAL RELEASE	—	L. Ma	04/25/08	J. Zhu
B	ADD Schedule	—	L. Ma	01/11/10	M. Dong
C	Dimensions Changed	—	L. Ma	04/07/11	M. Dong
D	Dimensions Changed	—	L. Ma	04/08/11	M. Dong
E	Part Number Changed	—	L. Ma	04/17/12	M. Dong
F	Dimensions Changed	—	L. Ma </td <td>08/21/12</td> <td>M. Dong</td>	08/21/12	M. Dong

## TECHNICAL DATA

### Electrical data

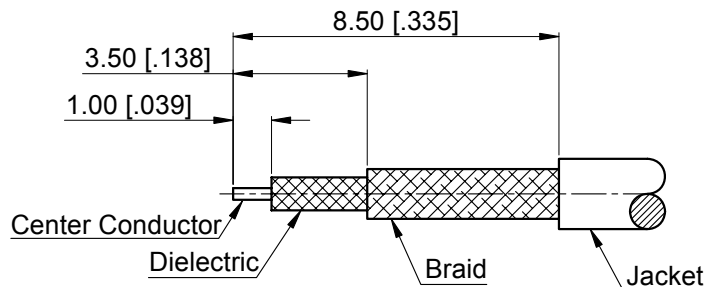
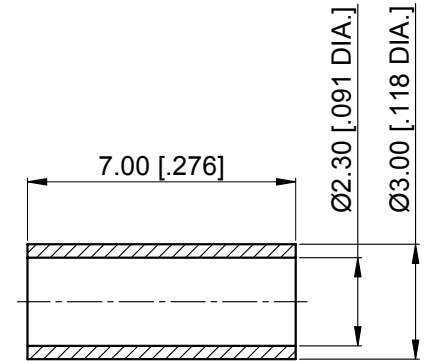
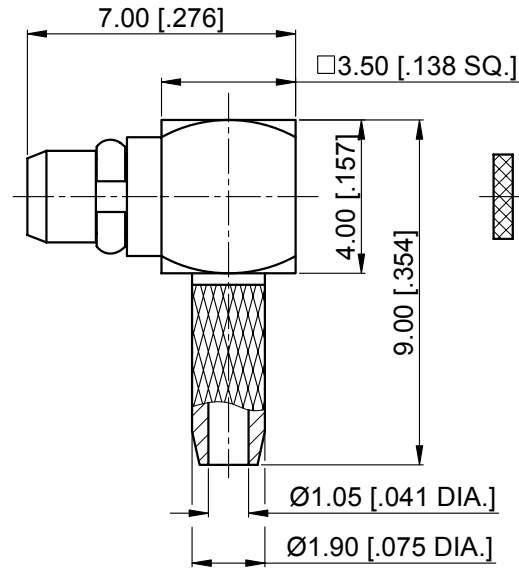
Impedance	50 Ω
Frequency range	0~3 GHz
Insulation resistance	≥1x10 <sup>3</sup> MΩ
Working voltage	≤170 V rms, 50Hz(at sea level)

### Mechanical data

Temperature range	-55 °C ~ +155 °C
Durability (matings)	>500

### Material data

Bodies	Brass, See Schedule
Pin Contact	Brass,Gold-plated
Spring Latch	Beryllium Copper Alloy,See Schedule
Crimp Ferrule	Copper,Nickel-plated
Insulator	PTFE




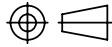
### RECOMMENDED CABLE STRIPPING DIMENSIONS

Part Number	Part / Finish
31-13-1M12-015-1	Bodies / Gold
	Spring Latch / Gold
31-13-1M12-015-2	Bodies / Nickel
	Spring Latch / Nickel

1. CRIMP FERRULE  
HEX.CRIMP TOOL SIZE: 2.54 [.100]

#### NOTES:

- ALL SPECIFICATIONS ARE SUBJECT TO CHANGE WITHOUT NOTICE AT ANY TIME
- CUSTOMER OUTLINE DRAWING FOR REFERENCE ONLY

DRAWN: L. Ma 08/21/12	TITLE:	 www.cmppter.com
ENGINEER: J. Zhu 08/21/12	MMCX Right Angle Male Crimp for RG178 Cable	
APPROVED: M. Dong 08/21/12		
TOLERANCE UNLESS OTHERWISE SPECIFIED		 DIMENSIONS IN MILLIMETERS (mm)
X ±0.50 [.019"] .X ±0.20 [.008"] .XX ±0.10 [.004"] ANGLES ±1°	PART No.: 31-13-1M12-015	SIZE: A4 SCALE: 5:1 SHEET: 1/1 REV: F