

TECHNICAL DATA

Electrical

Impedance 50 Ω
 Frequency range 0~6 GHz
 Withstanding voltage 1000 V
 Insulation resistance ≥5000MΩ

Mechanical & Environmental

Durability (matings) >500
 Temperature range -55 °C ~ +165 °C
 RoHS Compliant Yes

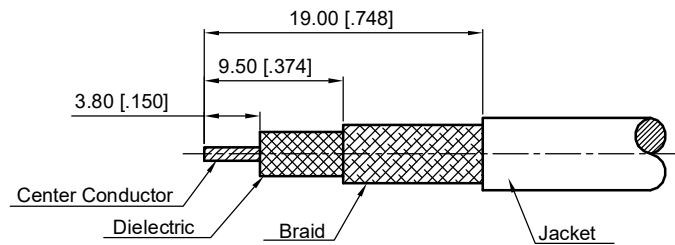
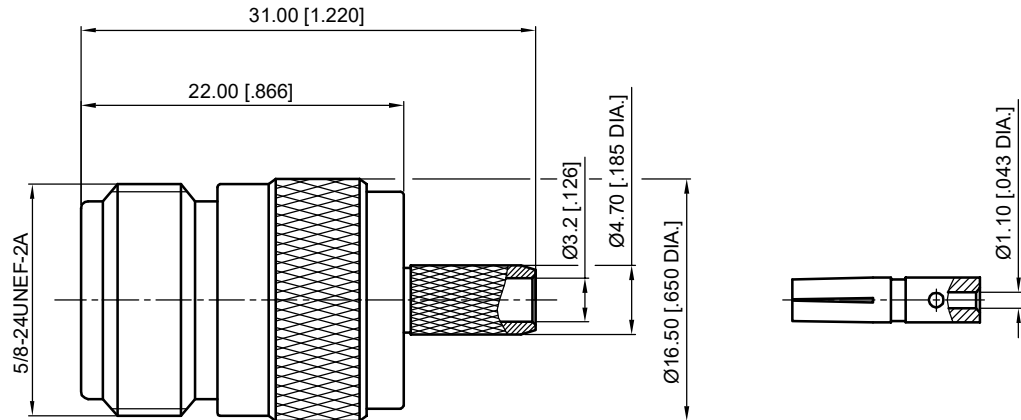
Material & Finish

Body Brass, Nickel-plated
 Pin Contact Phosphor Bronze, Gold-plated
 Crimp Ferrule Copper, Nickel-plated
 Insulator PTFE

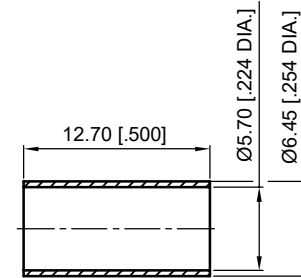
Interface Standards

N IEC-60169

| REVISIONS | | | | |
|-----------|-------------------------|---------|------------|----------|
| REV | DESCRIPTION OF REVISION | ECN No. | DATE | APPROVED |
| A | INITIAL RELEASE | --- | 02/26/2015 | M. Dong |
| B | STRUCTURE CHANGED | --- | 04/16/2015 | M. Dong |
| C | DIMENSIONS CHANGED | --- | 11/23/2016 | M. Dong |
| D | DIMENSIONS CHANGED | --- | 04/16/2018 | M. Dong |



Recommend Cable Stripping Dimensions



1.CRIMP FERRULE
 HEX. CRIMP TOOL SIZE : 5.54 [.218]

NOTES:

- ALL SPECIFICATIONS ARE SUBJECT TO CHANGE WITHOUT NOTICE AT ANY TIME
- UNLESS OTHERWISE SPECIFIED ALL DIMENSIONS ARE NOMINAL.

UNLESS OTHERWISE SPECIFIED, DIMENSIONS ARE IN MILLIMETERS (INCHES).
 UNLESS OTHERWISE SPECIFIED DIMENSIONAL TOLERANCES ARE:

.XX ±0.13 [.005"]
 .X ±0.20 [.008"]
 X ±0.50 [.019"]

ANGULAR TOLERANCES ARE: ALL= ±1°

DO NOT SCALE DRAWING

PROJECTION:



| | | |
|-----------|---------|------------|
| DRAWN: | L. Ma | 04/16/2018 |
| CHECKED: | J. Zhu | 04/16/2018 |
| APPROVED: | M. Dong | 04/16/2018 |

TITLE:
**N Straight Female Crimp for
 RG142/RG223/RG400 Cable**



Cmppter Electronics Co., Ltd. www.cmppter.com

PART No.:

50-02-1M21-133

| | | | |
|-------------|---------------|---------------|-----------|
| SIZE: A4 | SCALE: 2:1 | SHEET: 1/1 | REV: D |
|-------------|---------------|---------------|-----------|