

TECHNICAL DATA

Electrical

Impedance	50 Ω
Frequency range	0~6 GHz
Voltage rating	500 Vrms max.
Insulation resistance	≥5×10 ³ MΩ

Mechanical & Environmental

Durability (matings)	>500
Temperature range	-55 °C ~ +165 °C
RoHS Compliant	Yes

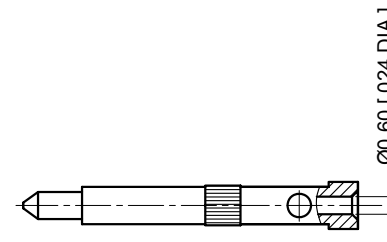
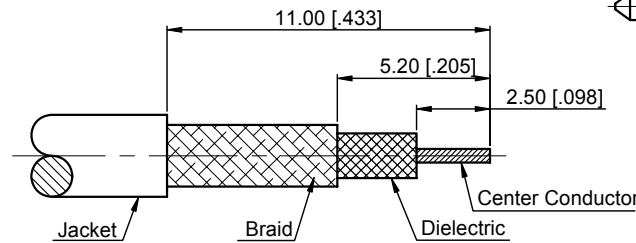
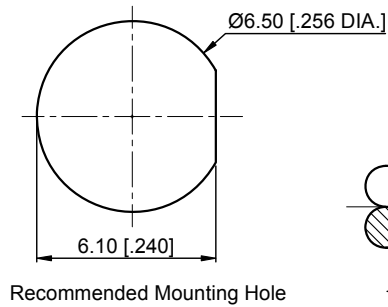
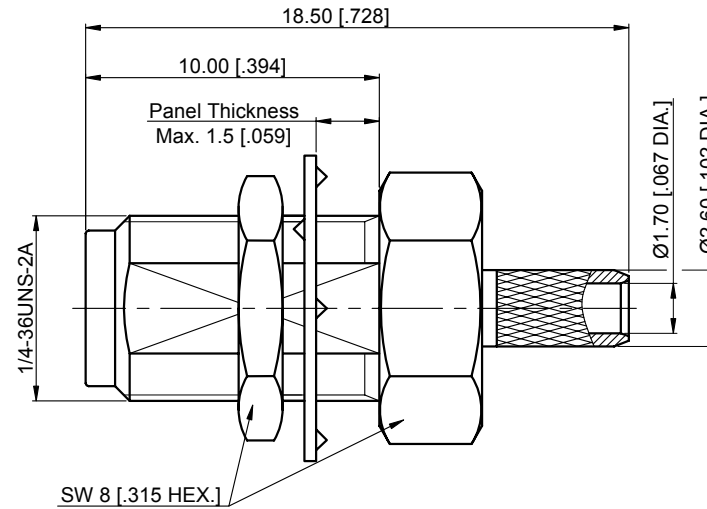
Material & Finish

Body	Brass, Gold-plated
Pin Contact	Brass, Gold-plated
Fastening Nut	Brass, Gold-plated
Crimp Ferrule	Copper, Nickel-plated
Insulator	PTFE

Interface Standards

SMA	IEC-60169
-----	-----------

REVISIONS				
REV	DESCRIPTION OF REVISION	ECN No.	DATE	APPROVED
A	INITIAL RELEASE		07/21/2014	M. Dong



1. CRIMP FERRULE
HEX. CRIMP TOOL SIZE: 3.25 [.128]

NOTES:

- ALL SPECIFICATIONS ARE SUBJECT TO CHANGE WITHOUT NOTICE AT ANY TIME
- UNLESS OTHERWISE SPECIFIED ALL DIMENSIONS ARE NOMINAL.

UNLESS OTHERWISE SPECIFIED, DIMENSIONS ARE IN MILLIMETERS [INCHES]. UNLESS OTHERWISE SPECIFIED DIMENSIONAL TOLERANCES ARE: .XX ±0.13 [.005"] .X ±0.20 [.008"] X ±0.50 [.019"] ANGULAR TOLERANCES ARE: ALL±1°	DRAWN: L. Ma 07/21/2014
DO NOT SCALE DRAWING	CHECKED: J. Zhu 07/21/2014
PROJECTION:	APPROVED: M. Dong 07/21/2014

TITLE:	RP SMA Straight Female Bulkhead Crimp for RG174/LMR100/RG316 Cable
--------	--

Cmptter Electronics Co., Ltd. www.cmptter.com			
PART No.: 61-02-1B00-025			
SIZE: A4	SCALE: 4:1	SHEET: 1/1	REV: A