

REV	DESCRIPTION OF REVISION	ECN No.	BY	DATE	APPROVED
A	INITIAL RELEASE	—	L. Ma	03/12/08	M. Dong
B	STRUCTURE CHANGED	—	L. Ma	02/15/10	M. Dong
C	DIMENSIONS CHANGED	—	L. Ma	10/14/11	M. Dong

TECHNICAL DATA

Electrical data

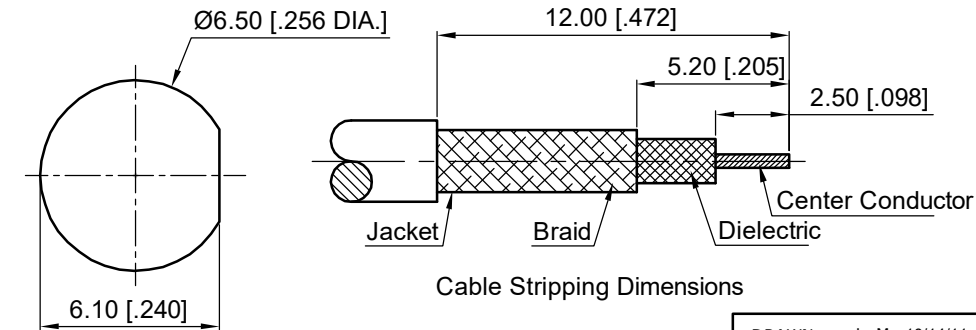
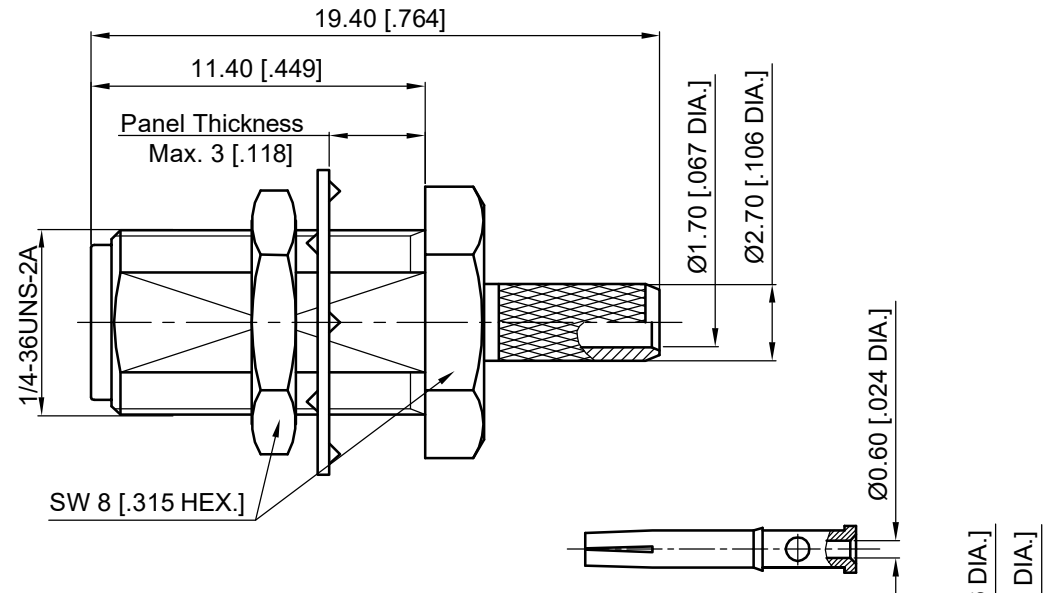
Impedance	50 Ω
Frequency range	0~6 GHz
Insulation resistance	≥5x10 ³ MΩ
Withstanding voltage	1000 V

Mechanical data

Temperature range	-65 °C ~ +165 °C
Durability (matings)	>500

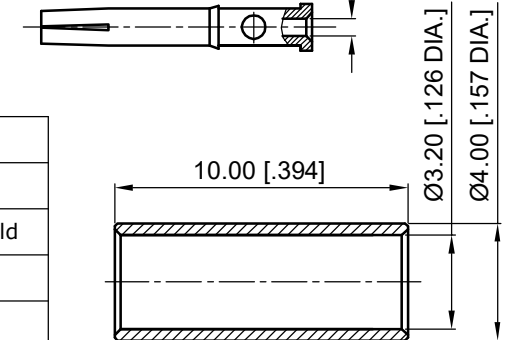
Material data

Bodies	Brass, See Schedule
Pin Contact	Beryllium Copper Alloy, Gold-plated
Fastening Nut	Brass, See Schedule
Crimp Ferrule	Copper, Nickel-plated
Insulator	PTFE
Washer	Beryllium Copper Alloy, Gold-plated



Cable Stripping Dimensions

Part Number	Part / Finish
60-02-1B00-023-1	Bodies / Gold
	Fastening Nut / Gold
	Washer / Gold
60-02-1B00-023-2	Bodies / Nickel
	Fastening Nut / Nickel
	Washer / Nickel




1. CRIMP FERRULE
HEX. CRIMP TOOL SIZE: 3.25 [0.128]

Recommended Mounting Hole

NOTES:

- ALL SPECIFICATIONS ARE SUBJECT TO CHANGE WITHOUT NOTICE AT ANY TIME
- CUSTOMER OUTLINE DRAWING FOR REFERENCE ONLY

DRAWN: L. Ma 10/14/11	TITLE:	 www.cmppter.com			
ENGINEER: J. Zhu 10/14/11	SMA Straight Bulkhead Female Crimp for LMR100/RG174/RG316 Cable				
APPROVED: M. Dong 10/14/11	PART No.: 60-02-1B00-023	SIZE: A4	SCALE: 4:1	SHEET: 1/1	REV: C
TOLERANCE UNLESS OTHERWISE SPECIFIED		DIMENSIONS IN MILLIMETERS (mm)			
X	±0.50 [0.019"]				
.X	±0.20 [0.008"]				
.XX	±0.10 [0.004"]				
ANGLES	±1°				