

REVISIONS

REV	DESCRIPTION OF REVISION	ECN No.	DATE	APPROVED
A	INITIAL RELEASE	---	10/20/2017	M. Dong
B	STRUCTURE CHANGED	---	10/23/2017	M. Dong

TECHNICAL DATA

Electrical

Impedance 50 Ω
 Frequency range 0~6 GHz
 Withstanding voltage 1000 V
 Insulation resistance $\geq 5 \times 10^3$ MΩ

Mechanical & Environmental

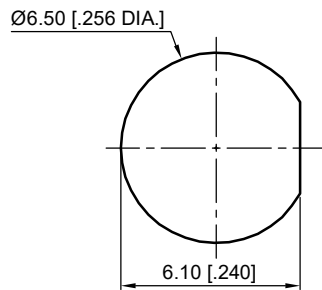
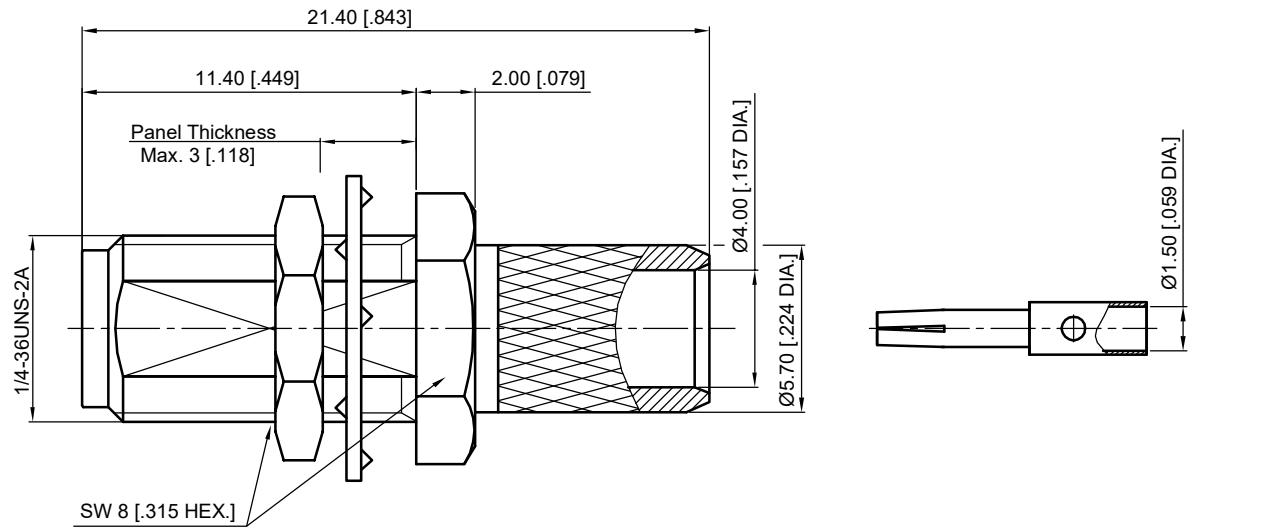
Durability (matings) >500
 Temperature range -55 °C ~ +165 °C
 RoHS Compliant Yes

Material & Finish

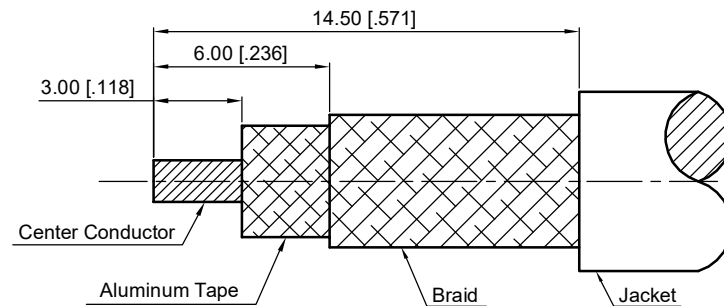
Body Brass, Gold-plated
 Pin Contact Beryllium Copper Alloy, Gold-plated
 Fastening Nut Brass, Gold-plated
 Washer Phosphor Bronze, Gold-plated
 Crimp Ferrule Copper, Nickel-plated
 Insulator PTFE

Interface Standards

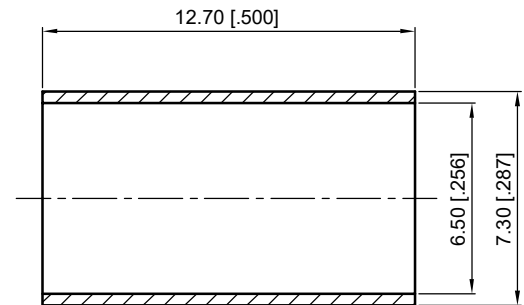
SMA IEC-60169



Recommended Mounting Hole



Recommended Cable Stripping Dimensions



1. CRIMP FERRULE
 HEX. CRIMP TOOL SIZE: 6.48 [.255]

NOTES:

- ALL SPECIFICATIONS ARE SUBJECT TO CHANGE WITHOUT NOTICE AT ANY TIME
- UNLESS OTHERWISE SPECIFIED ALL DIMENSIONS ARE NOMINAL.

UNLESS OTHERWISE SPECIFIED, DIMENSIONS ARE IN MILLIMETERS (INCHES).
 UNLESS OTHERWISE SPECIFIED DIMENSIONAL TOLERANCES ARE:

XX	±0.13 [.005"]
X	±0.20 [.008"]
X	±0.50 [.019"]

ANGULAR TOLERANCES ARE: ALL= ±1°
 DO NOT SCALE DRAWING
 PROJECTION:

DRAWN:	L. Ma	10/23/2017
CHECKED:	J. Zhu	10/23/2017
APPROVED:	M. Dong	10/23/2017

TITLE:
**SMA Straight Bulkhead
 Female Crimp for LMR 240
 Cable**

CMP TER[®]
 Cmpter Electronics Co., Ltd. www.cmpter.com

PART No.:
60-02-1B10-271

SIZE: A4	SCALE: 4:1	SHEET: 1/1	REV: B
-------------	---------------	---------------	-----------