

TECHNICAL DATA

Electrical

Impedance	50 Ω
Frequency range	0~6 GHz
Withstanding voltage	1000 V
Insulation resistance	≥5x10 ³ MΩ

Mechanical & Environmental

Durability (matings)	>500
Temperature range	-55 °C ~ +165 °C
RoHS Compliant	Yes

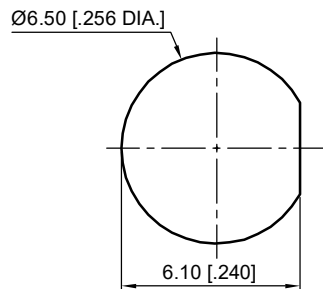
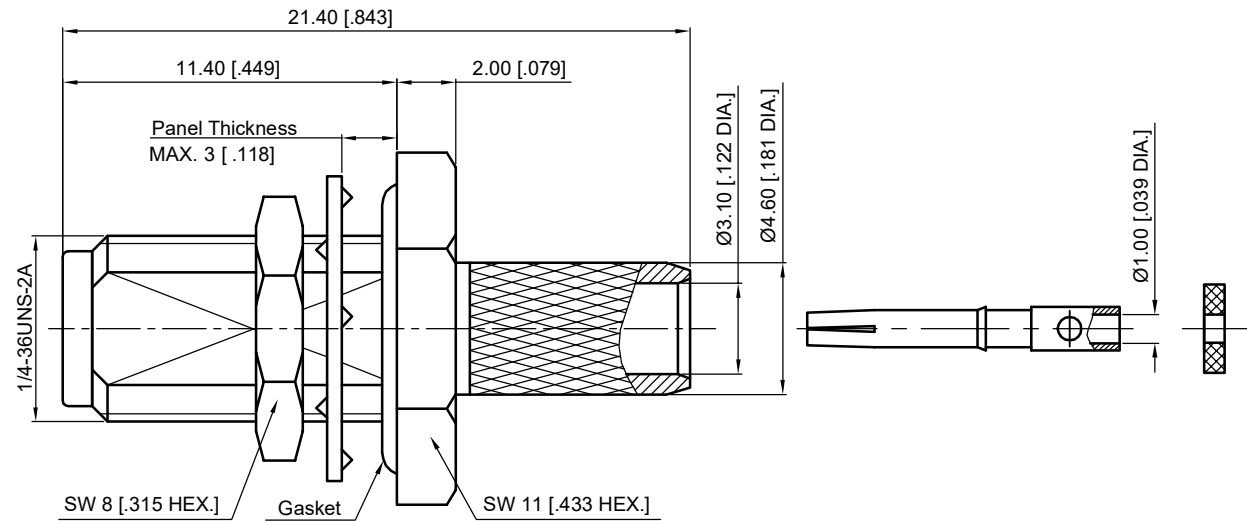
Material & Finish

Body	Brass, Gold-plated
Pin Contact	Beryllium Copper Alloy, Gold-plated
Fastening Nut	Brass, Gold-plated
Washer	Beryllium Copper Alloy, Gold-plated
Crimp Ferrule	Copper, Nickel-plated
Gasket	Silicone Rubber
Insulator	PTFE

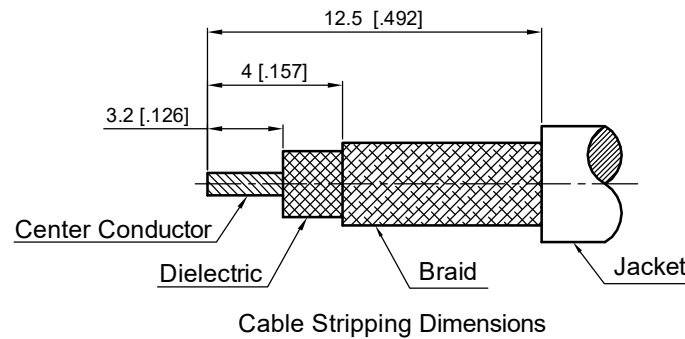
Interface Standards

SMA	IEC-60169
-----	-----------

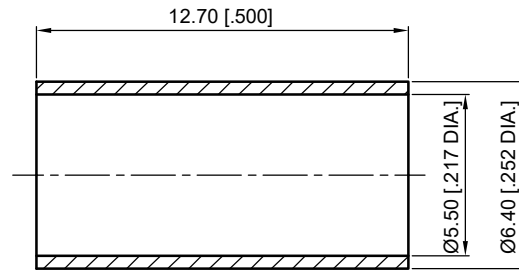
REVISIONS				
REV	DESCRIPTION OF REVISION	ECN No.	DATE	APPROVED
A	INITIAL RELEASE	---	11/21/2016	M. Dong
B	STRUCTURE CHANGED	---	05/12/2017	M. Dong



Recommended Mounting Hole



Cable Stripping Dimensions



1. CRIMP FERRULE
HEX. CRIMP TOOL SIZE: 5.4 [.213]

NOTES:

- ALL SPECIFICATIONS ARE SUBJECT TO CHANGE WITHOUT NOTICE AT ANY TIME
- UNLESS OTHERWISE SPECIFIED ALL DIMENSIONS ARE NOMINAL.

UNLESS OTHERWISE SPECIFIED, DIMENSIONS ARE IN MILLIMETERS (INCHES). UNLESS OTHERWISE SPECIFIED DIMENSIONAL TOLERANCES ARE: .XX ±0.13 [.005"] .X ±0.20 [.008"] X ±0.50 [.019"]	
ANGULAR TOLERANCES ARE: ALL= ±1°	
DO NOT SCALE DRAWING	
PROJECTION:	

DRAWN:	L. Ma	05/12/2017
CHECKED:	J. Zhu	05/12/2017
APPROVED:	M. Dong	05/12/2017

TITLE:
SMA Straight Waterproof Bulkhead Female Crimp for LMR195/RG58 Cable

CMP TER [®]			
Cmpter Electronics Co., Ltd. www.cmpter.com			
PART No.: 60-02-1B18-247			
SIZE: A4	SCALE: 4:1	SHEET: 1/1	REV: B