

TECHNICAL DATA

Electrical

Impedance 50 Ω
 Frequency range 0~6 GHz
 Withstanding voltage 1000 V
 Insulation resistance $\geq 5 \times 10^3$ MΩ

Mechanical & Environmental

Durability (matings) >500
 Temperature range -55 °C ~ +165 °C
 RoHS Compliant Yes

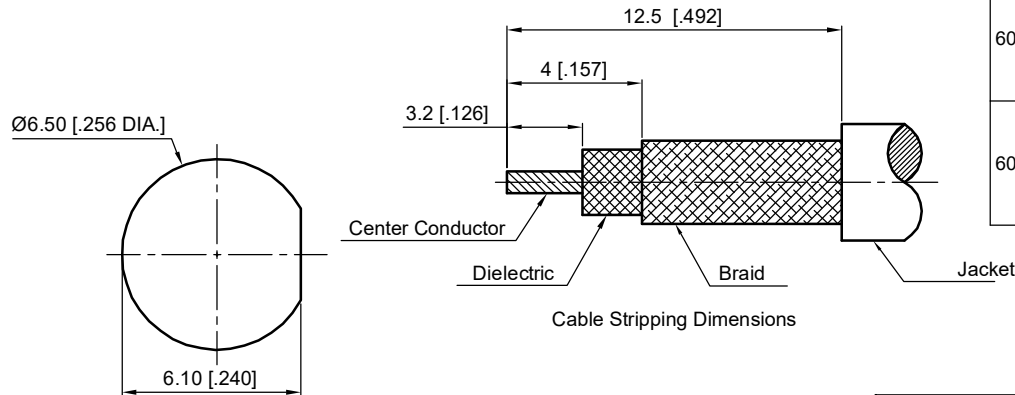
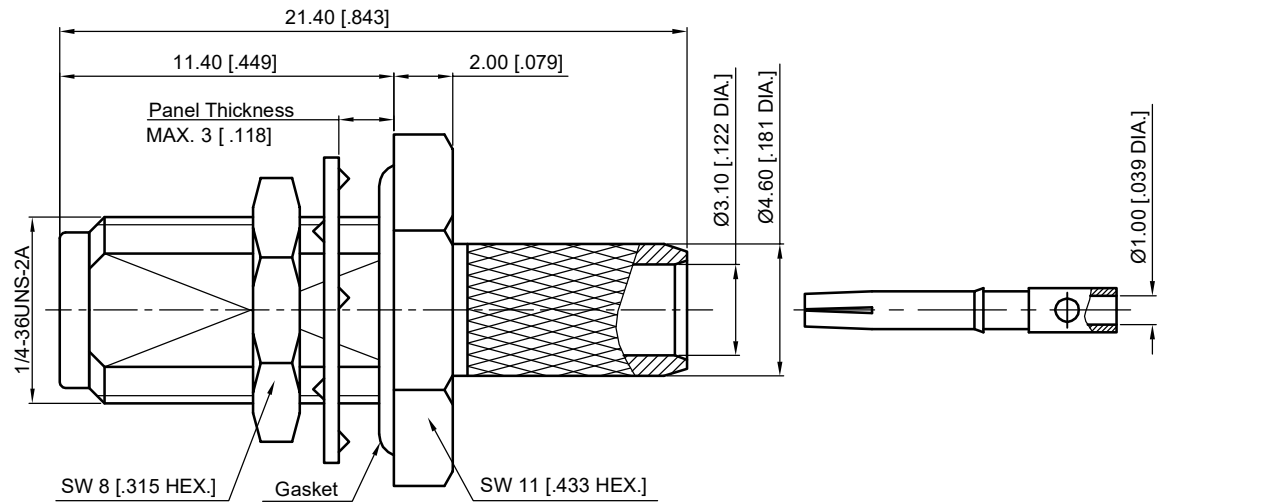
Material & Finish

Body Brass, See Table
 Pin Contact Beryllium Copper Alloy, Gold-plated
 Fastening Nut Brass, See Table
 Washer Phosphor Bronze, See Table
 Crimp Ferrule Copper, Nickel-plated
 Gasket Silicone Rubber
 Insulator PTFE

Interface Standards

SMA IEC-60169

REVISIONS				
REV	DESCRIPTION OF REVISION	ECN No.	DATE	APPROVED
A	INITIAL RELEASE	---	09/12/2011	M. Dong
B	STRUCTURE CHANGED	---	06/25/2018	M. Dong
C	STRUCTURE CHANGED	---	09/25/2018	M. Dong



Part Number	Part / Finish
60-02-1B21-052-1	Bodies / Gold
	Fastening Nut / Gold
	Washer / Gold
60-02-1B21-052-2	Bodies / Nickel
	Fastening Nut / Nickel
	Washer / Nickel

1. CRIMP FERRULE
 HEX. CRIMP TOOL SIZE : 5.54 [0.218]

Recommended Mounting Hole

- NOTES:
- ALL SPECIFICATIONS ARE SUBJECT TO CHANGE WITHOUT NOTICE AT ANY TIME
 - UNLESS OTHERWISE SPECIFIED ALL DIMENSIONS ARE NOMINAL.

UNLESS OTHERWISE SPECIFIED, DIMENSIONS ARE IN MILLIMETERS (INCHES).
 UNLESS OTHERWISE SPECIFIED DIMENSIONAL TOLERANCES ARE:

.XX ±0.13 [0.005]
 X ±0.20 [0.008]
 X ±0.50 [0.019]

ANGULAR TOLERANCES ARE: ALL= ±1°

DO NOT SCALE DRAWING

PROJECTION:

DRAWN:	L. Ma	05/12/2017
CHECKED:	J. Zhu	05/12/2017
APPROVED:	M. Dong	05/12/2017

TITLE:
SMA Straight Waterproof Bulkhead Female Crimp for RG142/RG223/RG400 Cable



Cmppter Electronics Co., Ltd. www.cmppter.com

PART No.:
60-02-1B21-052

SIZE: A4	SCALE: 4:1	SHEET: 1/1	REV: C
----------	------------	------------	--------