

REVISIONS				
REV	DESCRIPTION OF REVISION	ECN No.	DATE	APPROVED
A	INITIAL RELEASE		04/20/2016	M. Dong

TECHNICAL DATA

Electrical

Impedance 50 Ω
 Frequency range 0~3 GHz
 Withstanding voltage 750 V
 Insulation resistance ≥5000MΩ

Mechanical & Environmental

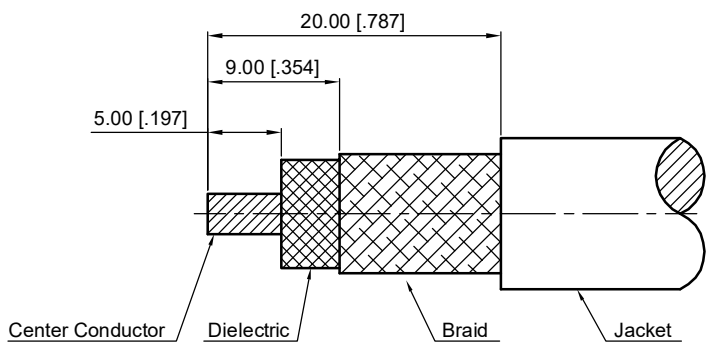
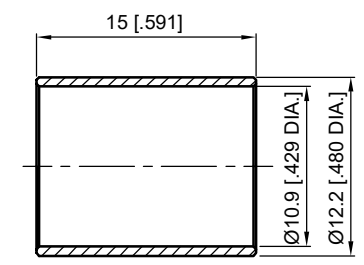
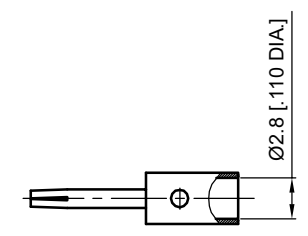
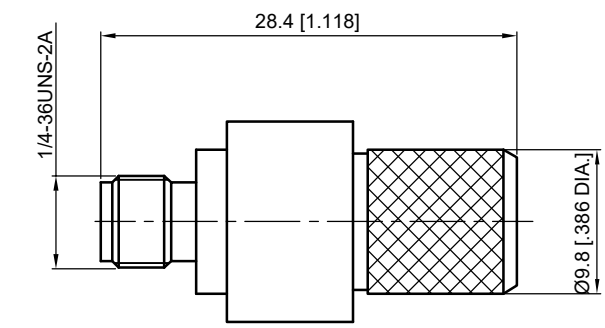
Durability (matings) >500
 Temperature range -55 °C ~ +165 °C
 RoHS Compliant Yes

Material & Finish

Body Brass, Nickel-plated
 Pin Contact Phosphor Bronze, Gold-plated
 Crimp Ferrule Copper, Nickel -plated
 Insulator PTFE

Interface Standards

SMA IEC-60169



Cable Stripping Dimensions

1. CRIMP FERRULE
 HEX.CRIMP TOOL SIZE: 10.9 [.429]

- NOTES:
- ALL SPECIFICATIONS ARE SUBJECT TO CHANGE WITHOUT NOTICE AT ANY TIME
 - UNLESS OTHERWISE SPECIFIED ALL DIMENSIONS ARE NOMINAL.

UNLESS OTHERWISE SPECIFIED, DIMENSIONS ARE IN MILLIMETERS (INCHES). UNLESS OTHERWISE SPECIFIED DIMENSIONAL TOLERANCES ARE: .XX ±0.13 [.005"] .X ±0.20 [.008"] X ±0.50 [.019"]	
ANGULAR TOLERANCES ARE: ALL= ±1°	
DO NOT SCALE DRAWING	
PROJECTION:	

DRAWN:	L. Ma	04/20/2016
CHECKED:	J. Zhu	04/20/2016
APPROVED:	M. Dong	04/20/2016

TITLE:
SMA Straight Male Crimp for LMR400 Cable

CMPPTER[®]
 Cmppter Electronics Co., Ltd. www.cmppter.com

PART No.:
60-02-1M01-235

SIZE: A4	SCALE: 2:1	SHEET: 1/1	REV: A
-------------	---------------	---------------	-----------