

REV	DESCRIPTION OF REVISION	ECN No.	BY	DATE	APPROVED
A	INITIAL RELEASE	—	L. Ma	05/12/07	M. Dong
B	STRUCTURE CHANGED	—	L. Ma	03/01/11	M. Dong

TECHNICAL DATA

Electrical data

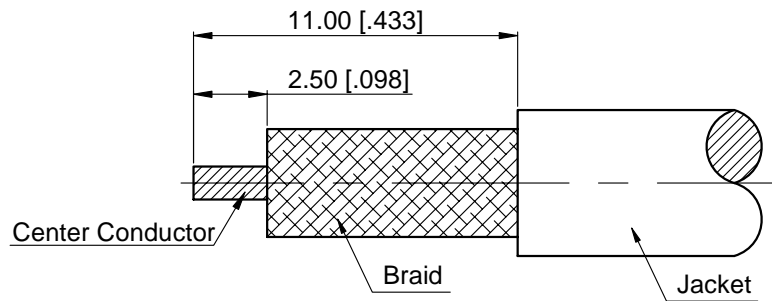
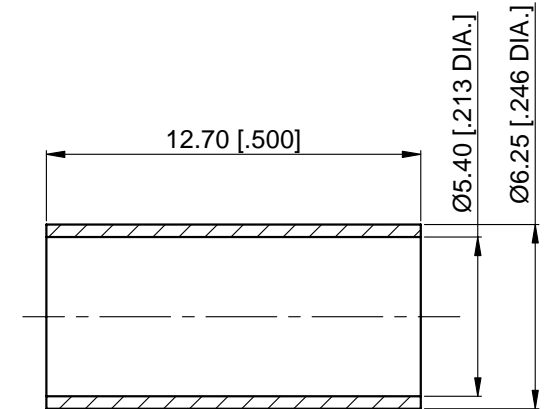
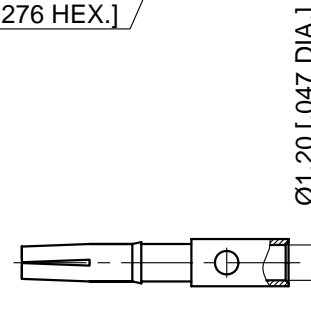
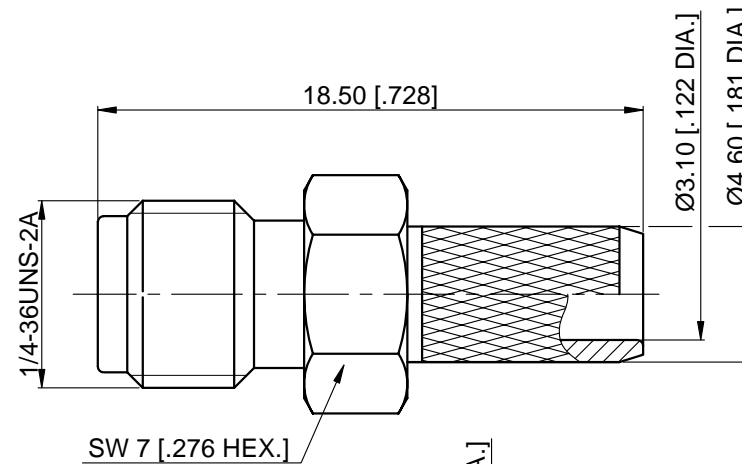
Impedance	50 Ω
Frequency range	0~6 GHz
Insulation resistance	≥5x10 ³ MΩ
Withstanding voltage	1000 V

Mechanical data

Temperature range	-65 °C ~ +165 °C
Durability (matings)	>500

Material data

Bodies	Brass, See Schedule
Pin Contact	Beryllium Copper Alloy, Gold-plated
Crimp Ferrule	Copper, Nickel-plated
Insulator	PTFE



Cable Stripping Dimensions

Part Number	Part / Finish
60-02-1M17-022-1	Bodies / Gold
60-02-1M17-022-2	Bodies / Nickel

1. CRIMP FERRULE
HEX. CRIMP TOOL SIZE: 5.4 [.213]

NOTES:

- ALL SPECIFICATIONS ARE SUBJECT TO CHANGE WITHOUT NOTICE AT ANY TIME
- CUSTOMER OUTLINE DRAWING FOR REFERENCE ONLY

DRAWN:	L. Ma 03/01/11
ENGINEER:	J. Zhu 03/01/11
APPROVED:	M. Dong 03/01/11
TOLERANCE UNLESS OTHERWISE SPECIFIED	
X	±0.50 [.019"]
.X	±0.20 [.008"]
.XX	±0.10 [.004"]
ANGLES	±1°

TITLE:
SMA Straight Female Crimp
for LMR200 Cable

PART No.: 60-02-1M17-022

CMPPTER®
www.cmppter.com

DIMENSIONS IN MILLIMETERS (mm)

SIZE: A4	SCALE: 4:1	SHEET: 1/1	REV: B
-------------	---------------	---------------	-----------