

**TECHNICAL DATA**

**Electrical**

Impedance 50 Ω  
 Frequency range 0~6 GHz  
 Withstanding voltage 1000 V  
 Insulation resistance ≥5x10<sup>3</sup> MΩ

**Mechanical & Environmental**

Durability (matings) >500  
 Temperature range -65 °C ~ +165 °C  
 RoHS Compliant Yes

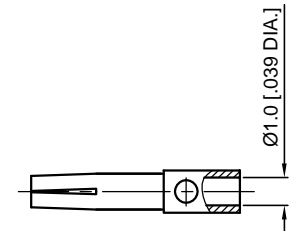
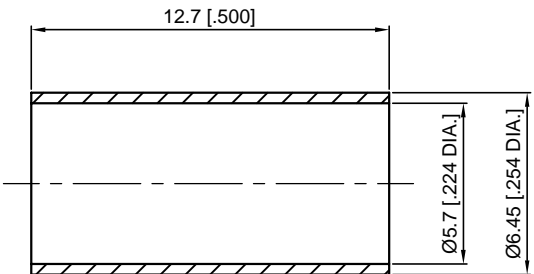
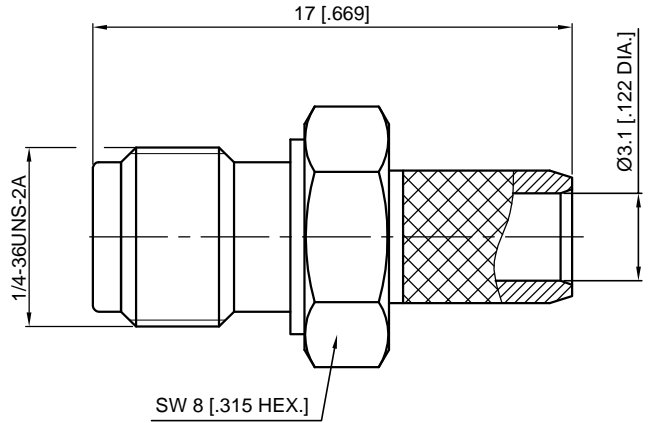
**Material & Finish**

Body Brass, Gold-plated  
 Pin Contact Phosphor Bronze, Gold-plated  
 Crimp Ferrule Copper, Nickel-plated  
 Insulator PTFE

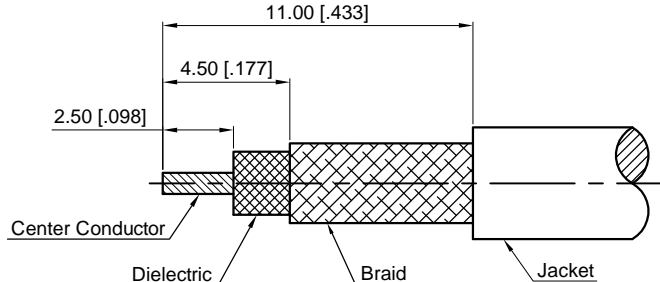
**Interface Standards**

SMA IEC-61169

REVISIONS				
REV	DESCRIPTION OF REVISION	ECN No.	DATE	APPROVED
A	INITIAL RELEASE	—	08/15/2018	M. Dong



1.CRIMP FERRULE  
 HEX. CRIMP TOOL SIZE : 5.54 [.218]



Recommended Cable Stripping Dimensions

- NOTES:
- ALL SPECIFICATIONS ARE SUBJECT TO CHANGE WITHOUT NOTICE AT ANY TIME
  - UNLESS OTHERWISE SPECIFIED ALL DIMENSIONS ARE NOMINAL.

UNLESS OTHERWISE SPECIFIED, DIMENSIONS ARE IN MILLIMETERS (INCHES).  
 UNLESS OTHERWISE SPECIFIED DIMENSIONAL TOLERANCES ARE:

.XX	±0.13 [.005"]
X	±0.20 [.008"]
X	±0.50 [.019"]

ANGULAR TOLERANCES ARE: ALL= ±1°

DO NOT SCALE DRAWING

PROJECTION:

DRAWN:	L. Ma	08/15/2018
CHECKED:	J. Zhu	08/15/2018
APPROVED:	M. Dong	08/15/2018

TITLE:  
**SMA Straight Female Crimp for RG142/RG223/RG400 Cable**

**CMP TER**®  
 Cmptter Electronics Co., Ltd. [www.cmptter.com](http://www.cmptter.com)

PART No.:  
**60-02-1M21-273**

SIZE: A4	SCALE: 4:1	SHEET: 1/1	REV: A
----------	------------	------------	--------