

REVISIONS

REV	DESCRIPTION OF REVISION	ECN No.	DATE	APPROVED
A	INITIAL RELEASE		10/11/2013	M. Dong

**TECHNICAL DATA**

**Electrical**

Impedance 50 Ω  
 Frequency range 0~6 GHz  
 Withstanding voltage 500 V  
 Insulation resistance ≥5000MΩ

**Mechanical & Environmental**

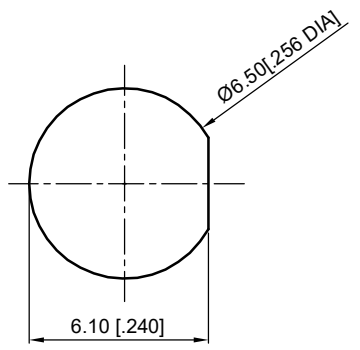
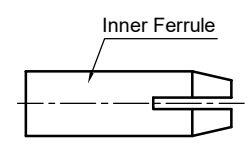
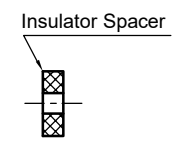
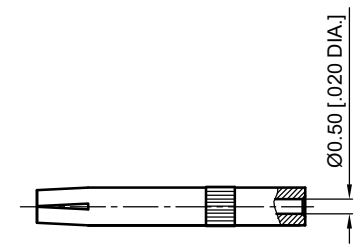
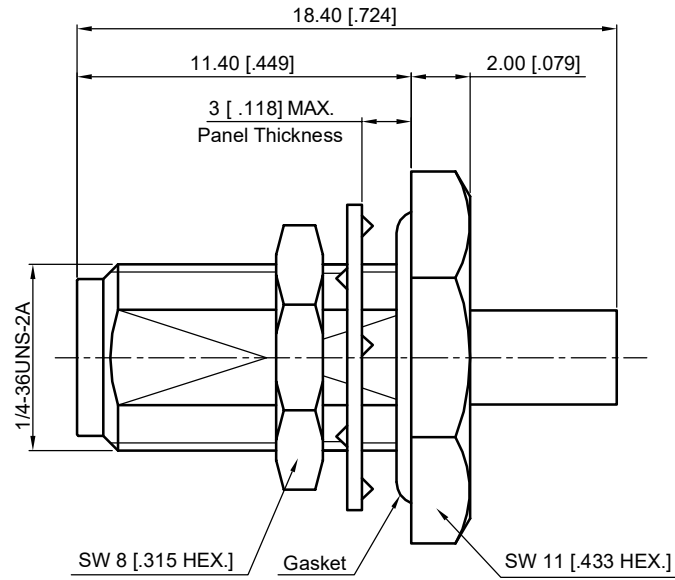
Durability (matings) >500  
 Temperature range -55 °C ~ +165 °C  
 RoHS Compliant Yes

**Material & Finish**

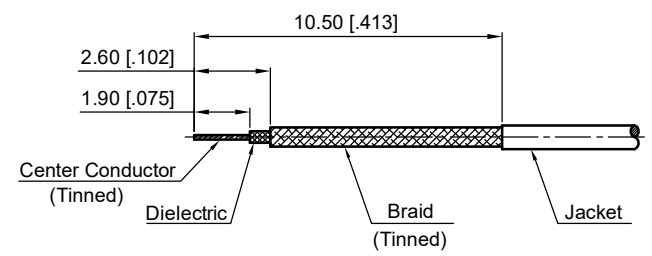
Body Brass, Gold-plated  
 Pin Contact Beryllium Copper Alloy, Gold-plated  
 Fastening Nut Brass, Gold-plated  
 Washer Phosphor Bronze, Gold-plated  
 Insulator PTFE

**Interface Standards**

SMA IEC-60169



Recommended Mounting Hole



Recommended Cable Stripping Dimensions

NOTES:  
 1. ALL SPECIFICATIONS ARE SUBJECT TO CHANGE WITHOUT NOTICE AT ANY TIME  
 2. UNLESS OTHERWISE SPECIFIED ALL DIMENSIONS ARE NOMINAL.

UNLESS OTHERWISE SPECIFIED, DIMENSIONS ARE IN MILLIMETERS (INCHES). UNLESS OTHERWISE SPECIFIED DIMENSIONAL TOLERANCES ARE:  
 .XX ±0.13 [.005"]  
 .X ±0.20 [.008"]  
 X ±0.50 [.019"]  
 ANGULAR TOLERANCES ARE: ALL= ±1°  
 DO NOT SCALE DRAWING  
 PROJECTION:

DRAWN:	L. Ma	10/11/2013
CHECKED:	J. Zhu	10/11/2013
APPROVED:	M. Dong	10/11/2013

TITLE:  
**SMA Straight Waterproof Bulkhead Female Solder for 1.37mm Cable**



Cmppter Electronics Co., Ltd. [www.cmppter.com](http://www.cmppter.com)

PART No.:  
**60-02-2D23-169**

SIZE: A4	SCALE: 4:1	SHEET: 1/1	REV: A
-------------	---------------	---------------	-----------