

REV	DESCRIPTION OF REVISION	ECN No.	BY	DATE	APPROVED
A	INITIAL RELEASE	—	L. Ma	04/15/08	M. Dong
B	PART NUMBER CHANGED	—	L. Ma	12/03/10	M. Dong

TECHNICAL DATA

Electrical data

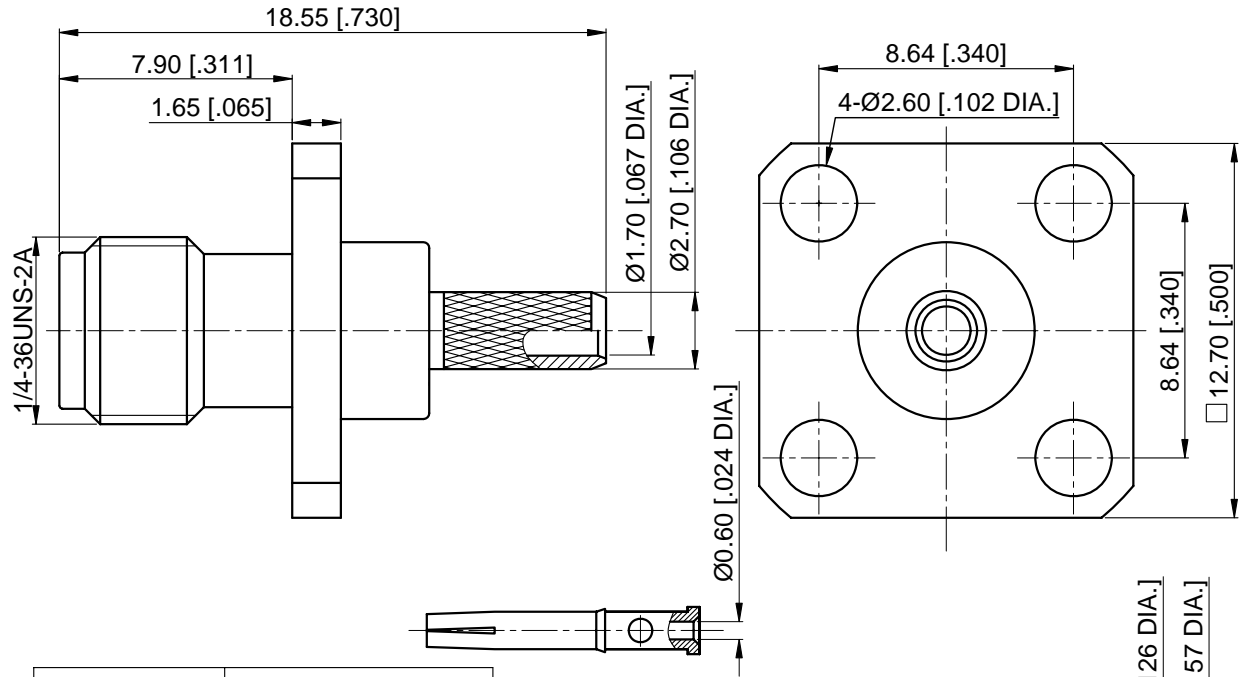
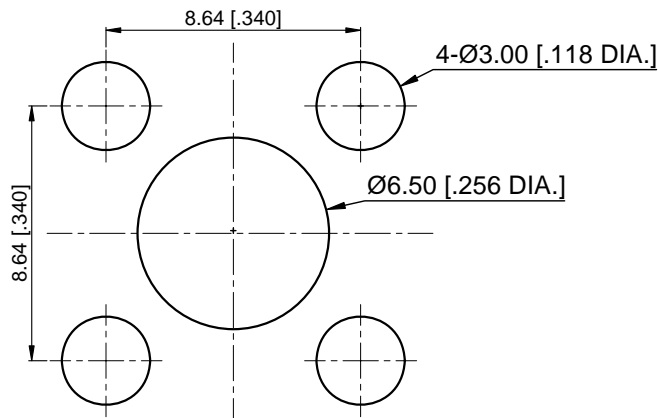
Impedance	50 Ω
Frequency range	0~6 GHz
Insulation resistance	≥5×10 ³ MΩ
Withstanding voltage	1000 V

Mechanical data

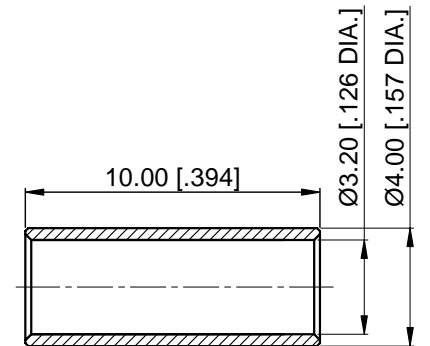
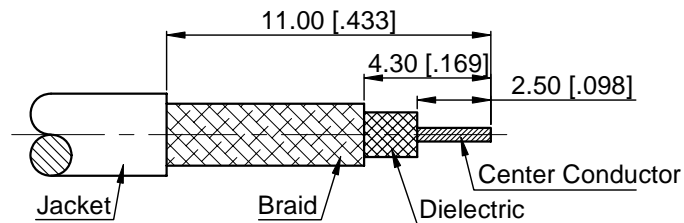
Temperature range	-65 °C ~ +165 °C
Durability (matings)	>500

Material data

Bodies	Brass, See Schedule
Pin Contact	Beryllium Copper Alloy, Gold-plated
Crimp Ferrule	Copper, Nickel-plated
Insulator	PTFE




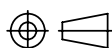
Part Number	Part / Finish
60-02-5F00-026-1	Bodies / Gold
60-02-5F00-026-2	Bodies / Nickel



1. CRIMP FERRULE
HEX. CRIMP TOOL SIZE: 3.25 [.128]

NOTES:

- ALL SPECIFICATIONS ARE SUBJECT TO CHANGE WITHOUT NOTICE AT ANY TIME
- CUSTOMER OUTLINE DRAWING FOR REFERENCE ONLY

DRAWN: L. Ma 12/03/10	TITLE:	 www.cmppter.com
ENGINEER: J. Zhu 12/03/10	SMA Straight Female 4 Hole Panel Mount Crimp for LMR100/RG174/RG316 Cable	
APPROVED: M. Dong 12/03/10		 DIMENSIONS IN MILLIMETERS (mm)
TOLERANCE UNLESS OTHERWISE SPECIFIED	PART No.: 60-02-5F00-026	
X ±0.50 [.019"] .X ±0.20 [.008"] .XX ±0.10 [.004"] ANGLES ±1°	SIZE: A4	SCALE: 4:1
		SHEET: 1/1
		REV: B