

REV	DESCRIPTION OF REVISION	ECN No.	BY	DATE	APPROVED
A	INITIAL RELEASE	—	L. Ma	08/29/11	M. Dong

TECHNICAL DATA

Electrical data

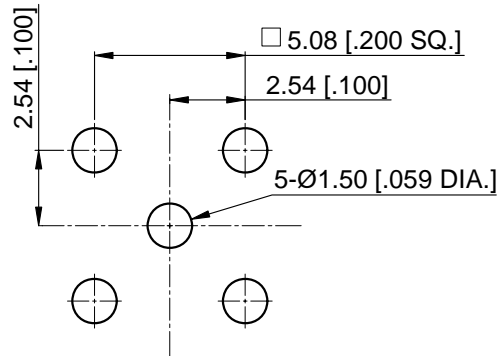
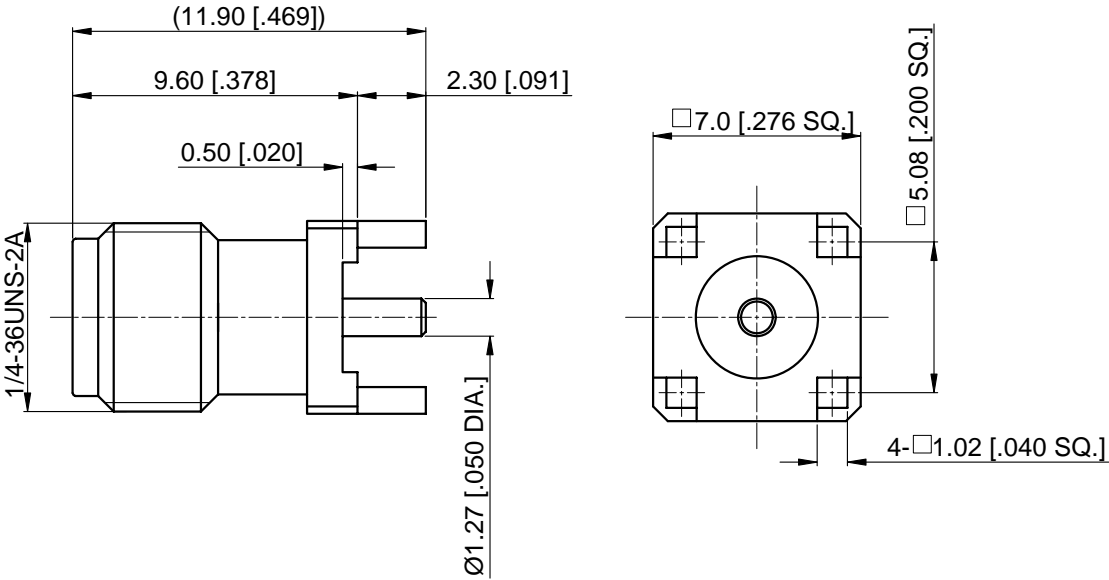
Impedance	50 Ω
Frequency range	0~12.4 GHz
Insulation resistance	1x10 ³ MΩ min.
Working Voltage	335 Vrms max.
Dielectric Withstanding voltage	1000 Vrms min.

Mechanical data

Temperature range	-65 °C ~ +165 °C
Durability (matings)	>500


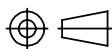
Material data

Bodies	Brass, Gold-plated
Pin Contact	Beryllium Copper Alloy, Gold-plated
Insulator	PTFE



Recommended Mounting Hole

- NOTES:
- ALL SPECIFICATIONS ARE SUBJECT TO CHANGE WITHOUT NOTICE AT ANY TIME
 - CUSTOMER OUTLINE DRAWING FOR REFERENCE ONLY

DRAWN: L. Ma 08/29/11	TITLE: SMA Straight PCB Jack	 www.cmptter.com			
ENGINEER: J. Zhu 08/29/11					
APPROVED: M. Dong 08/29/11		 DIMENSIONS IN MILLIMETERS (mm)			
TOLERANCE UNLESS OTHERWISE SPECIFIED	PART No.: 60-02-5L2-142			SIZE: A4	SCALE: 4:1
X ±0.50 [.019"] .X ±0.20 [.008"] .XX ±0.10 [.004"] ANGLES ±1°					