

## TECHNICAL DATA

### Electrical

Impedance	50 Ω
Frequency range	0~27 GHz
VSWR	1.10:1 (0~18GHz)
	1.15:1 (0~27GHz)

Contact resistance	
-centre contact	≤3mΩ
-outer contact	≤2mΩ
Insulation resistance	≥5000MΩ

### Mechanical & Environmental

Durability (matings)	>500
Temperature range	-55 °C ~ +165 °C
RoHS Compliant	Yes

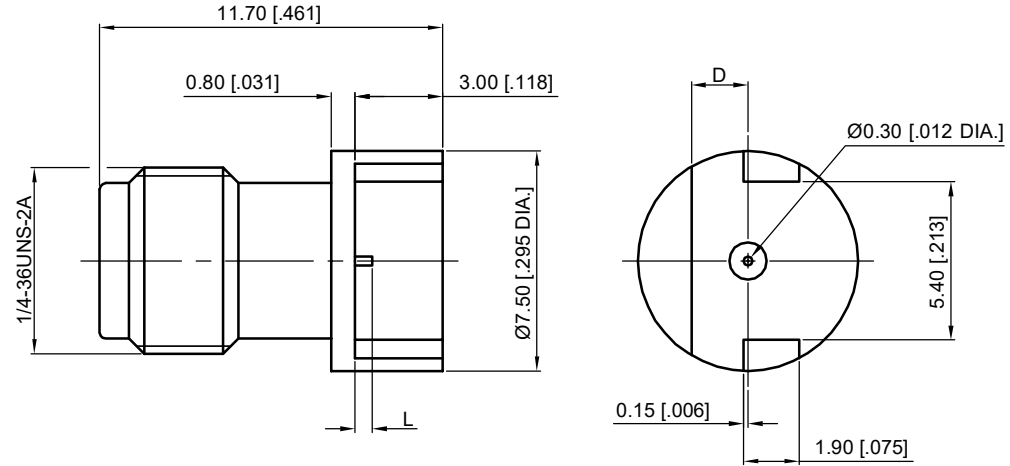
### Material & Finish

Body	Stainless Steel (SU303), Passivated
Pin Contact	Beryllium Copper Alloy, Gold-plated
Insulator	PEI, PTFE

### Interface Standards

SMA	MIL-STD-348A
-----	--------------

REVISIONS				
REV	DESCRIPTION OF REVISION	ECN No.	DATE	APPROVED
A	INITIAL RELEASE	---	10/21/2010	M. Dong
B	Dimension "D" CHANGED	---	03/08/2015	M. Dong



Part Number	D	L	Board Thickness
60-02-5M2-069 A	1.93 [.076]	0.6 [.023]	1.78 [.070]
60-02-5M2-069 B	0.76 [.030]	0.6 [.023]	0.61 [.024]
60-02-5M2-069 C	1.02 [.040]	0.6 [.023]	0.87 [.034]
60-02-5M2-069 D	1.93 [.076]	1.22 [.048]	1.78 [.070]
60-02-5M2-069 E	0.76 [.030]	1.22 [.048]	0.61 [.024]
60-02-5M2-069 F	1.02 [.040]	1.22 [.048]	0.87 [.034]

### NOTES:

- ALL SPECIFICATIONS ARE SUBJECT TO CHANGE WITHOUT NOTICE AT ANY TIME
- UNLESS OTHERWISE SPECIFIED ALL DIMENSIONS ARE NOMINAL.

UNLESS OTHERWISE SPECIFIED, DIMENSIONS ARE IN MILLIMETERS (INCHES).  
UNLESS OTHERWISE SPECIFIED DIMENSIONAL TOLERANCES ARE:

.XX	±0.13 [.005"]
.X	±0.20 [.008"]
X	±0.50 [.019"]

ANGULAR TOLERANCES ARE: ALL= ±1°

DO NOT SCALE DRAWING

PROJECTION:



DRAWN:	L. Ma	03/08/2015
CHECKED:	J. Zhu	03/08/2015
APPROVED:	M. Dong	03/08/2015

TITLE:

**SMA Straight Female,  
PCB Mount**

**CMPPTER**®

Cmppter Electronics Co., Ltd. [www.cmppter.com](http://www.cmppter.com)

PART No.:

**60-02-5M2-069**

SIZE:	SCALE:	SHEET:	REV:
A4	4:1	1/1	B