

TECHNICAL DATA

Electrical

Impedance	50 Ω
Interface Frequency	18 GHz (Max.)
Operating voltage	335 V (Max.)
Insulation resistance	≥5000MΩ

Mechanical & Environmental

Durability (matings)	>500
Temperature range	-65 °C ~ +165 °C
RoHS Compliant	Yes

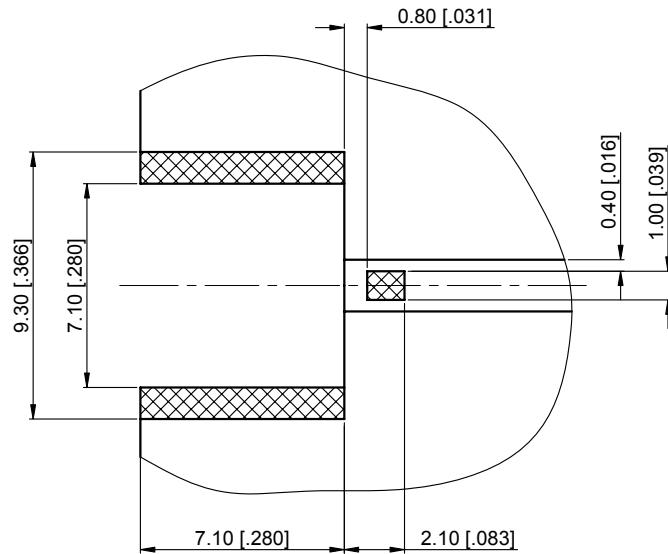
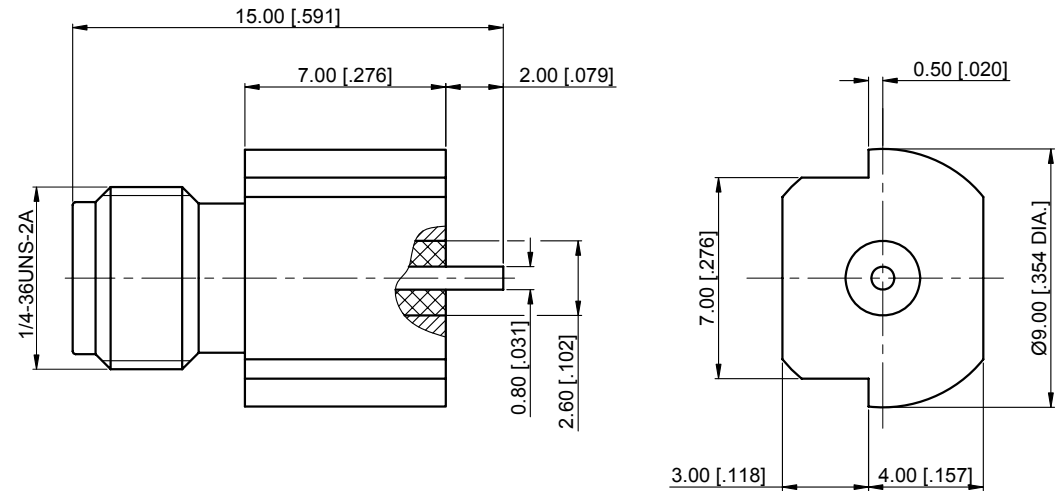
Material & Finish

Body	Brass, Gold 5μ in. over Nickel 50 μ in. over Copper 50 μ in.
Pin Contact	Beryllium Copper Alloy, Gold 20μ in. over Nickel 50 μ in. over Copper 50 μ in.
Insulator	PTFE

Interface Standards

SMA	IEC-60169
-----	-----------

REVISIONS				
REV	DESCRIPTION OF REVISION	ECN No.	DATE	APPROVED
A	INITIAL RELEASE	---	01/14/2015	M. Dong
B	ADD SOLDER AREAS	---	04/15/2016	M. Dong



Recommended Solder Areas

UNLESS OTHERWISE SPECIFIED, DIMENSIONS ARE IN MILLIMETERS [INCHES].
UNLESS OTHERWISE SPECIFIED DIMENSIONAL TOLERANCES ARE:

.XX	±0.13 [0.005"]
.X	±0.20 [0.008"]
X	±0.50 [0.019"]

ANGULAR TOLERANCES ARE: ALL±1°

DO NOT SCALE DRAWING

PROJECTION:

DRAWN:	L. Ma	04/15/2016
CHECKED:	J. Zhu	04/15/2016
APPROVED:	M. Dong	04/15/2016

TITLE:
SMA Female Connector Solder Attachment End Launch PCB, .030 inch Diameter

Cmptter Electronics Co., Ltd. www.cmptter.com			
PART No.: 60-02-6L2-201			
SIZE: A4	SCALE: 4:1	SHEET: 1/1	REV: B

NOTES:

- ALL SPECIFICATIONS ARE SUBJECT TO CHANGE WITHOUT NOTICE AT ANY TIME
- UNLESS OTHERWISE SPECIFIED ALL DIMENSIONS ARE NOMINAL.