

REVISIONS

REV	DESCRIPTION OF REVISION	ECN No.	DATE	APPROVED
A	INITIAL RELEASE	—	12/07/2017	M. Dong

TECHNICAL DATA

Electrical

Impedance 50 Ω
 Frequency range 0~6 GHz
 Withstanding voltage 1000 V
 Insulation resistance $\geq 5 \times 10^3$ MΩ

Mechanical & Environmental

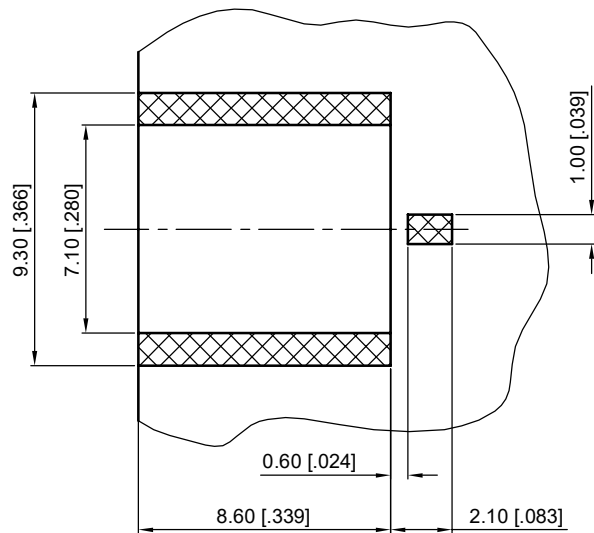
Durability (matings) >500
 Temperature range -55 °C ~ +165 °C
 RoHS Compliant Yes

Material & Finish

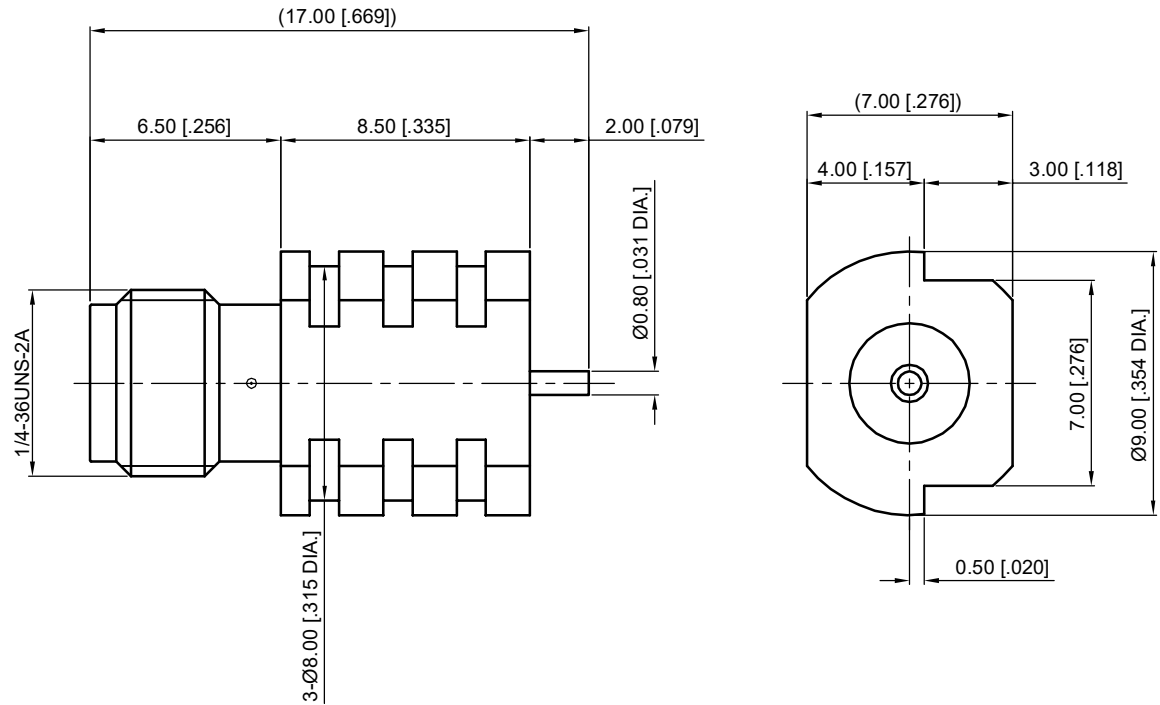
Body Brass, Gold-plated 0.8μm
 Pin Contact Beryllium Copper Alloy, Gold-plated 1.27μm
 Insulator PTFE

Interface Standards

SMA IEC-60169



Recommended Solder Areas



NOTES:

- ALL SPECIFICATIONS ARE SUBJECT TO CHANGE WITHOUT NOTICE AT ANY TIME
- UNLESS OTHERWISE SPECIFIED ALL DIMENSIONS ARE NOMINAL.

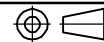
UNLESS OTHERWISE SPECIFIED, DIMENSIONS ARE IN MILLIMETERS [INCHES].
 UNLESS OTHERWISE SPECIFIED DIMENSIONAL TOLERANCES ARE:

XX ±0.13 [0.005"]
 X ±0.20 [0.008"]
 X ±0.50 [0.019"]

ANGULAR TOLERANCES ARE: ALL= ±1°

DO NOT SCALE DRAWING

PROJECTION:



DRAWN:	L. Ma	12/07/2017
CHECKED:	J. Zhu	12/07/2017
APPROVED:	M. Dong	12/07/2017

TITLE:
SMA Straight Female Solder Attachment End Launch PCB, Surface Mount



Cmppter Electronics Co., Ltd. www.cmppter.com

PART No.:
60-02-6L2-275

SIZE: A4	SCALE: 4:1	SHEET: 1/1	REV: A
-------------	---------------	---------------	-----------