

TECHNICAL DATA

Electrical

Impedance	50 Ω
Frequency range	0~18 GHz
Withstanding voltage	1000 V
Insulation resistance	≥5x10 ³ MΩ

Mechanical & Environmental

Durability (matings)	>500
Temperature range	-55 °C ~ +165 °C
RoHS Compliant	Yes

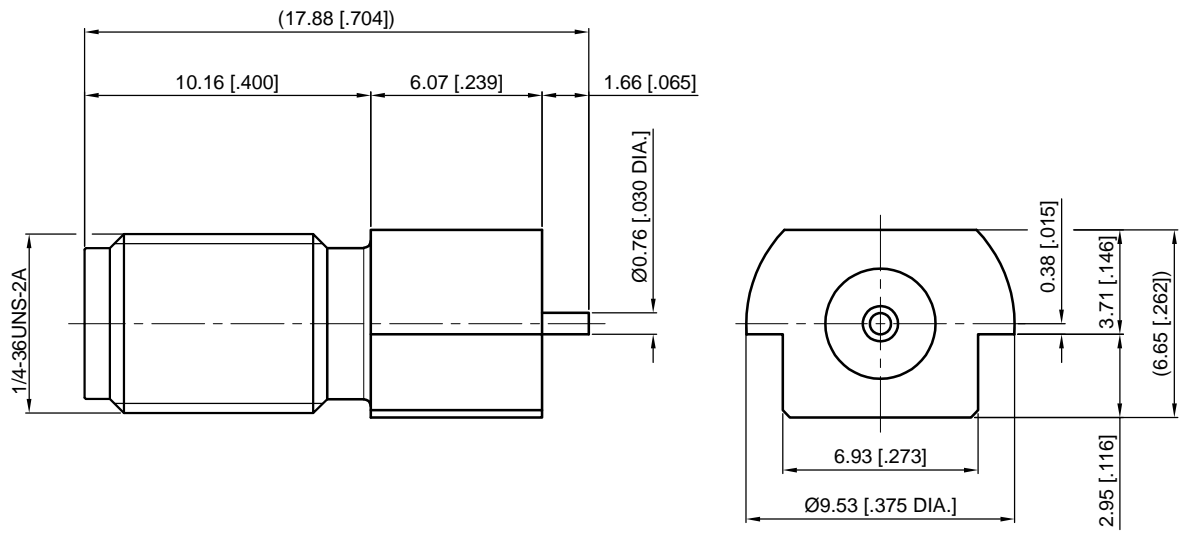
Material & Finish

Body	Brass, Gold plated
Pin Contact	Beryllium Copper Alloy, Gold plated
Insulator	PTFE

Interface Standards

SMA	IEC-60169
-----	-----------

REVISIONS				
REV	DESCRIPTION OF REVISION	ECN No.	DATE	APPROVED
A	INITIAL RELEASE	---	07/05/2022	M. Dong
B	DIMENSIONS CHANGED	---	07/06/2022	M. Dong



1
2
3
4
5
6
7

1
2
3
4
5
6
7

NOTES:
 1. ALL SPECIFICATIONS ARE SUBJECT TO CHANGE WITHOUT NOTICE AT ANY TIME
 2. UNLESS OTHERWISE SPECIFIED ALL DIMENSIONS ARE NOMINAL.

UNLESS OTHERWISE SPECIFIED, DIMENSIONS ARE IN MILLIMETERS (INCHES). UNLESS OTHERWISE SPECIFIED DIMENSIONAL TOLERANCES ARE: .XX ±0.13 [0.005"] X ±0.20 [0.008"] X ±0.50 [0.019"] ANGULAR TOLERANCES ARE: ALL=±1° DO NOT SCALE DRAWING PROJECTION:	DRAWN:	L. Ma	07/06/2022
	CHECKED:	J. Zhu	07/06/2022
	APPROVED:	M. Dong	07/06/2022
	TITLE:	SMA Straight Female Solder Attachment End Launch PCB, Surface Mount	

CMP^{TER}®
 Cmpt^{er} Electronics Co., Ltd. www.cmpt^{er}.com

PART No.: **60-02-6L2-442**

SIZE: A4	SCALE: 4:1	SHEET: 1/1	REV: B
----------	------------	------------	--------