

REV	DESCRIPTION OF REVISION	ECN No.	BY	DATE	APPROVED
A	INITIAL RELEASE	—	H. Xiao	03/03/11	M. Dong

TECHNICAL DATA

Electrical data

Impedance	50 Ω
Frequency range	0~27 GHz
VSWR	1.10:1 (0~18GHz) 1.15:1 (18GHz~27GHz)
Contact resistance	
-centre contact	≤3mΩ
-outer contact	≤2mΩ
Insulation resistance	≥5000MΩ

Mechanical data

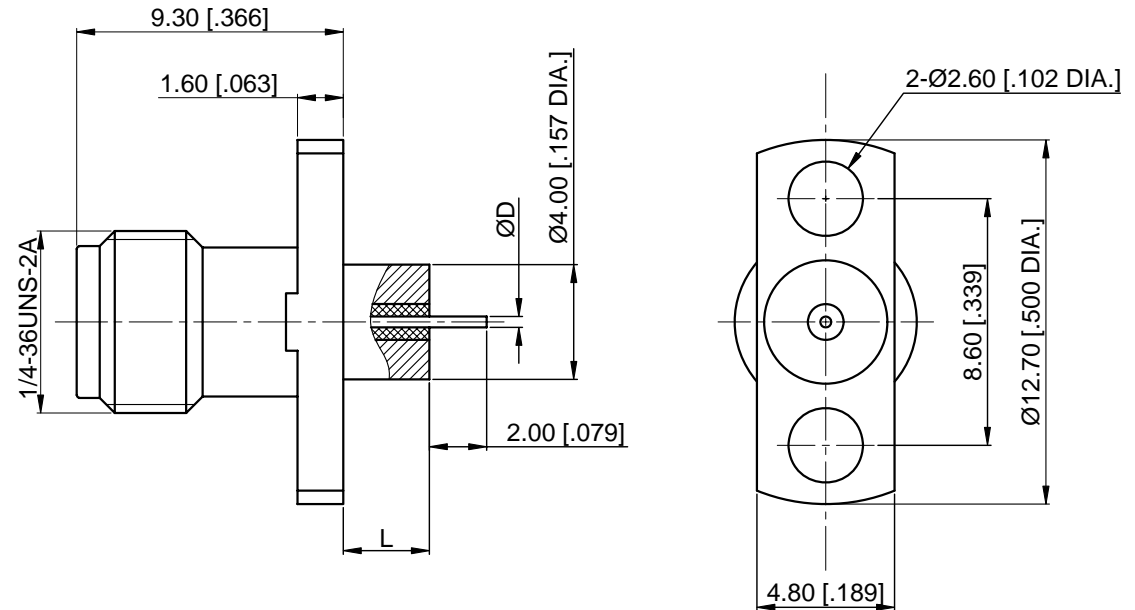
Temperature range	-55 °C ~ +165 °C
Durability (matings)	>500

Material data

Body	Stainless Steel (SU303), Passivated
Pin Contact	Beryllium Copper Alloy, Gold-plated
Insulator	PEI, PTFE

Interface Standards

SMA	MIL-STD-348A
-----	--------------



Part Number	ØD	L
60-02-9E2-096A	0.80 [.031]	4 [.157]
60-02-9E2-096B	0.38 [.015]	3 [.118]

NOTES:

- ALL SPECIFICATIONS ARE SUBJECT TO CHANGE WITHOUT NOTICE AT ANY TIME
- CUSTOMER OUTLINE DRAWING FOR REFERENCE ONLY

DRAWN:	H. Xiao 03/03/11
ENGINEER:	YF. Zhu 03/03/11
APPROVED:	M. Dong 03/03/11
TOLERANCE UNLESS OTHERWISE SPECIFIED	
X	±0.50 [.019"]
.X	±0.20 [.008"]
.XX	±0.10 [.004"]
ANGLES	±1°

TITLE:
SMA Straight Female,
Metal Through the Wall,
2 Hole Flange

PART No.: 60-02-9E2-096

CMPPTER®
www.cmppter.com

DIMENSIONS IN MILLIMETERS (mm)

SIZE:	SCALE:	SHEET:	REV:
A4	4:1	1/1	A