

| REV | DESCRIPTION OF REVISION | ECN No. | BY | DATE | APPROVED |
|-----|-------------------------|---------|---------|----------|----------|
| A | INITIAL RELEASE | — | H. Xiao | 03/08/11 | M. Dong |

TECHNICAL DATA

Electrical data

| | |
|-----------------------|--|
| Impedance | 50 Ω |
| Frequency range | 0~27 GHz |
| VSWR | 1.10:1 (0~18GHz) 1.15:1 (18GHz~27GHz) |
| Contact resistance | |
| -centre contact | ≤3mΩ |
| -outer contact | ≤2mΩ |
| Insulation resistance | ≥5000MΩ |

Mechanical data

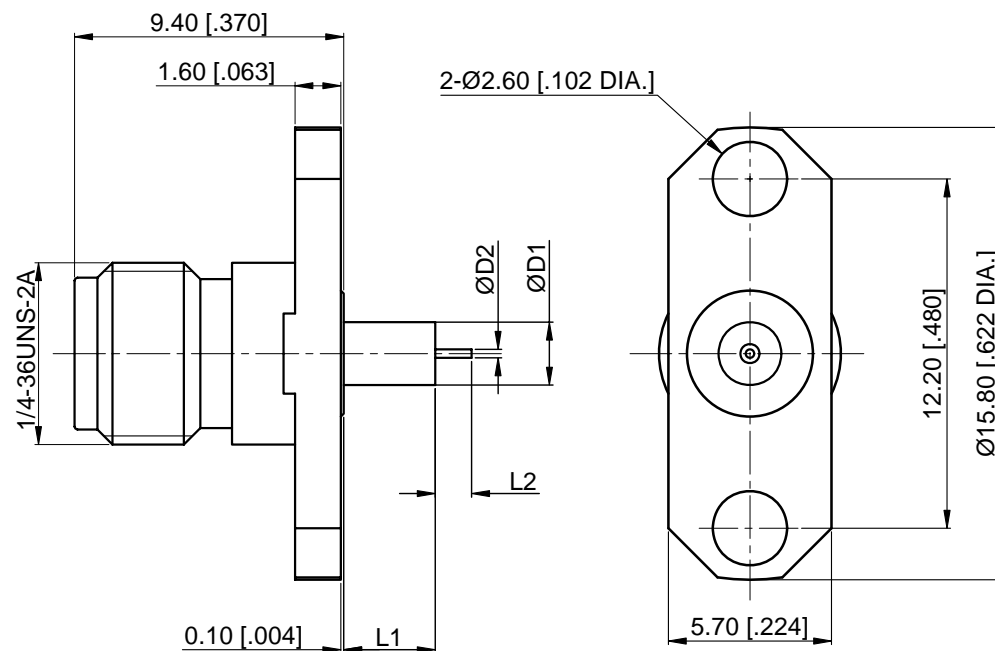
| | |
|----------------------|------------------|
| Temperature range | -55 °C ~ +165 °C |
| Durability (matings) | >500 |

Material data

| | |
|-------------|-------------------------------------|
| Body | Stainless Steel (SU303), Passivated |
| Pin Contact | Beryllium Copper Alloy, Gold-plated |
| Insulator | PEI, PTFE |

Interface Standards



| | |
|-----|--------------|
| SMA | MIL-STD-348A |
|-----|--------------|



| Part Number | ØD1 | ØD2 | L1 | L2 |
|----------------|------------|-------------|------------|-------------|
| 60-02-9E2-117A | 2.2 [.087] | 0.30 [.012] | 3.2 [.126] | 1.27 [.050] |
| 60-02-9E2-117B | 3.9 [.154] | 0.64 [.025] | 15 [.591] | 3 [.118] |
| 60-02-9E2-117C | 2.1 [.083] | 0.64 [.025] | 15 [.591] | 3 [.118] |

NOTES:

- ALL SPECIFICATIONS ARE SUBJECT TO CHANGE WITHOUT NOTICE AT ANY TIME
- CUSTOMER OUTLINE DRAWING FOR REFERENCE ONLY

| | | |
|--------------------------------------|--|--|
| DRAWN: H. Xiao 03/08/11 | TITLE: |  www.cmppter.com |
| ENGINEER: YF. Zhu 03/08/11 | SMA Straight Female, Insulator Through the Wall, 2 Hole Flange | |
| APPROVED: M. Dong 03/08/11 | | |
| TOLERANCE UNLESS OTHERWISE SPECIFIED | | DIMENSIONS IN MILLIMETERS (mm) |
| X | ±0.50 [.019"] |  |
| .X | ±0.20 [.008"] | |
| .XX | ±0.10 [.004"] | SIZE: A4 |
| ANGLES | ±1° | SCALE: 4:1 |
| PART No.: 60-02-9E2-117 | | SHEET: 1/1 |
| | | REV: A |