

REV	DESCRIPTION OF REVISION	ECN No.	BY	DATE	APPROVED
A	INITIAL RELEASE	—	H. Xiao	03/08/11	M. Dong

TECHNICAL DATA

Electrical data

Impedance	50 Ω
Frequency range	0~27 GHz
VSWR	1.10:1 (0~18GHz) 1.15:1 (18GHz~27GHz)
Contact resistance	
-centre contact	≤3mΩ
-outer contact	≤2mΩ
Insulation resistance	≥5000MΩ

Mechanical data

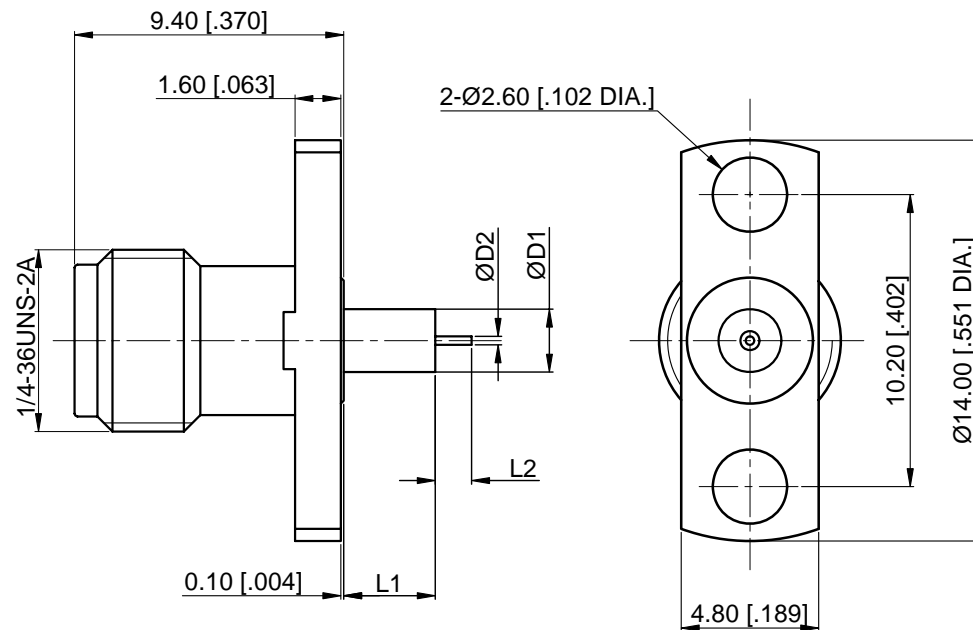
Temperature range	-55 °C ~ +165 °C
Durability (matings)	>500

Material data

Body	Stainless Steel (SU303), Passivated
Pin Contact	Beryllium Copper Alloy, Gold-plated
Insulator	PEI, PTFE

Interface Standards



SMA	MIL-STD-348A
-----	--------------



Part Number	ØD1	ØD2	L1	L2
60-02-9E2-118A	2.2 [.087]	0.30 [.012]	3.2 [.126]	1.27 [.050]
60-02-9E2-118B	2.1 [.083]	0.64 [.025]	15 [.591]	3 [.118]

NOTES:

- ALL SPECIFICATIONS ARE SUBJECT TO CHANGE WITHOUT NOTICE AT ANY TIME
- CUSTOMER OUTLINE DRAWING FOR REFERENCE ONLY

DRAWN: H. Xiao 03/08/11	TITLE:	 www.cmppter.com
ENGINEER: YF. Zhu 03/08/11	SMA Straight Female, Insulator Through the Wall, 2 Hole Flange	
APPROVED: M. Dong 03/08/11		
TOLERANCE UNLESS OTHERWISE SPECIFIED		DIMENSIONS IN MILLIMETERS (mm)
X	±0.50 [.019"]	
.X	±0.20 [.008"]	
.XX	±0.10 [.004"]	SIZE: A4
ANGLES	±1°	SCALE: 4:1
PART No.: 60-02-9E2-118		SHEET: 1/1
		REV: A