

REV	DESCRIPTION OF REVISION	ECN No.	BY	DATE	APPROVED
A	INITIAL RELEASE	—	H. Xiao	03/08/11	M. Dong

TECHNICAL DATA

Electrical data

Impedance	50 Ω
Frequency range	0~27 GHz
VSWR	1.10:1 (0~18GHz) 1.15:1 (18GHz~27GHz)
Contact resistance	
-centre contact	≤3mΩ
-outer contact	≤2mΩ
Insulation resistance	≥5000MΩ

Mechanical data

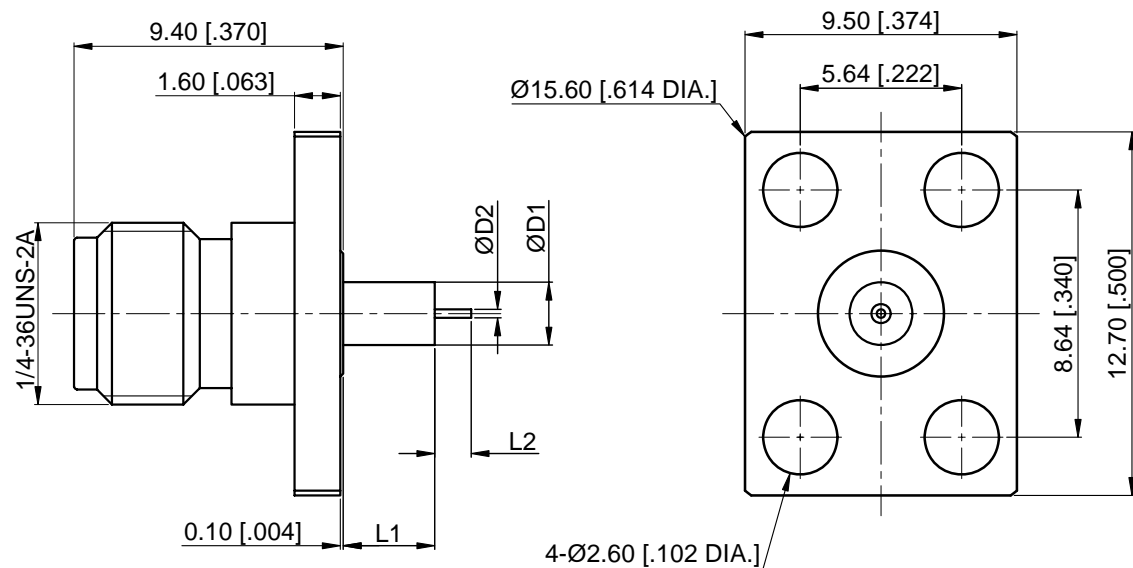
Temperature range	-55 °C ~ +165 °C
Durability (matings)	>500

Material data

Body	Stainless Steel (SU303), Passivated
Pin Contact	Beryllium Copper Alloy, Gold-plated
Insulator	PEI, PTFE

Interface Standards


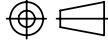
SMA	MIL-STD-348A
-----	--------------



Part Number	ØD1	ØD2	L1	L2
60-02-9F2-115A	2.2 [.087]	0.30 [.012]	3.2 [.126]	1.27 [.050]
60-02-9F2-115B	2.1 [.083]	0.64 [.025]	15 [.591]	3 [.118]

NOTES:

- ALL SPECIFICATIONS ARE SUBJECT TO CHANGE WITHOUT NOTICE AT ANY TIME
- CUSTOMER OUTLINE DRAWING FOR REFERENCE ONLY

DRAWN: H. Xiao 03/08/11	TITLE:	 www.cmppter.com	 DIMENSIONS IN MILLIMETERS (mm)		
ENGINEER: YF. Zhu 03/08/11	SMA Straight Female, Insulator Through the Wall, 4 Hole Flange				
APPROVED: M. Dong 03/08/11	PART No.: 60-02-9F2-115				
TOLERANCE UNLESS OTHERWISE SPECIFIED X ±0.50 [.019"] .X ±0.20 [.008"] .XX ±0.10 [.004"] ANGLES ±1°		SIZE: A4	SCALE: 4:1	SHEET: 1/1	REV: A