

REV	DESCRIPTION OF REVISION	ECN No.	BY	DATE	APPROVED
A	INITIAL RELEASE	—	H. Xiao	03/14/11	M. Dong

TECHNICAL DATA

Electrical data

Impedance	50 Ω
Frequency range	0~27 GHz
VSWR	1.10:1 (0~18GHz) 1.15:1 (18GHz~27GHz)
Contact resistance	
-centre contact	≤3mΩ
-outer contact	≤2mΩ
Insulation resistance	≥5000MΩ

Mechanical data

Temperature range	-55 °C ~ +165 °C
Durability (matings)	>500

Material data

Body	Stainless Steel (SU303), Passivated
Pin Contact	Beryllium Copper Alloy, Gold-plated
Insulator	PEI, PTFE

Interface Standards

SMA MIL-STD-348A

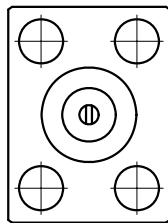


Fig.1

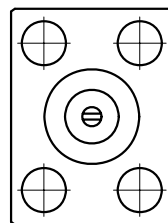
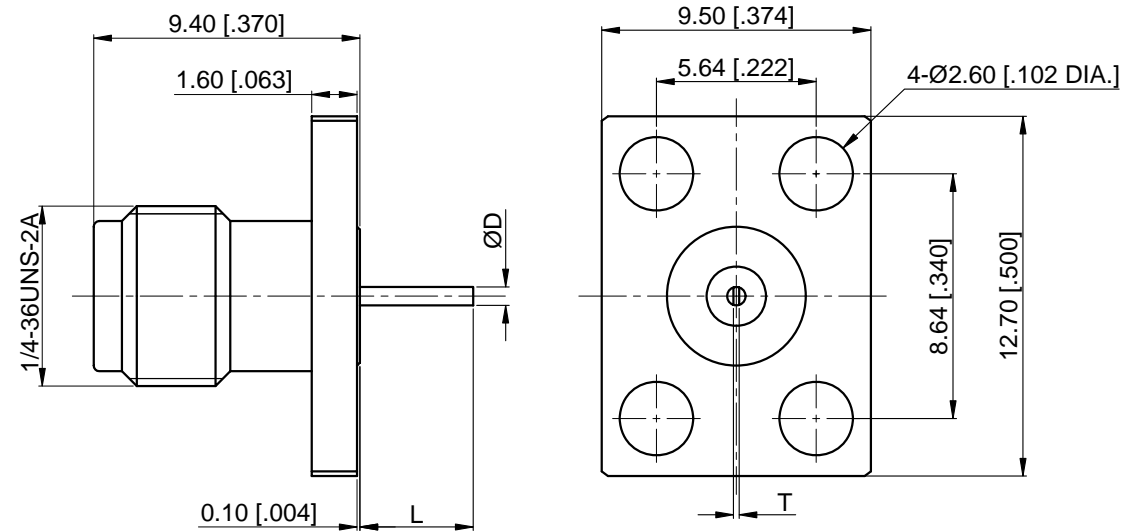


Fig.2



Part Number	ØD PIN	L	T	Figure
60-02-9F6-134A	0.65 [.026]	4 [.157]	0.2 [.008]	Fig.1
60-02-9F6-134B	0.65 [.026]	4 [.157]	0.2 [.008]	Fig.2
60-02-9F6-134C	1.27 [.050]	1.27 [.050]	0.15 [.006]	Fig.1
60-02-9F6-134D	1.27 [.050]	1.27 [.050]	0.15 [.006]	Fig.2

NOTES:

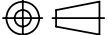
- ALL SPECIFICATIONS ARE SUBJECT TO CHANGE WITHOUT NOTICE AT ANY TIME
- CUSTOMER OUTLINE DRAWING FOR REFERENCE ONLY

DRAWN: H. Xiao 03/14/11
ENGINEER: YF. Zhu 03/14/11
APPROVED: M. Dong 03/14/11
TOLERANCE UNLESS OTHERWISE SPECIFIED
X ±0.50 [.019"]
.X ±0.20 [.008"]
.XX ±0.10 [.004"]
ANGLES ±1°

TITLE:
SMA Straight Female,
4 Hole Flange

PART No.: 60-02-9F6-134

CMPPTER®
www.cmppter.com

 DIMENSIONS IN MILLIMETERS (mm)

SIZE: A4	SCALE: 4:1	SHEET: 1/1	REV: A
-------------	---------------	---------------	-----------