

TECHNICAL DATA

Electrical

Impedance	50 Ω
Frequency range	0~6 GHz
Withstanding voltage	1000 V
Insulation resistance	≥5000MΩ

Mechanical & Environmental

Durability (matings)	>500
Temperature range	-55 °C ~ +165 °C
RoHS Compliant	Yes

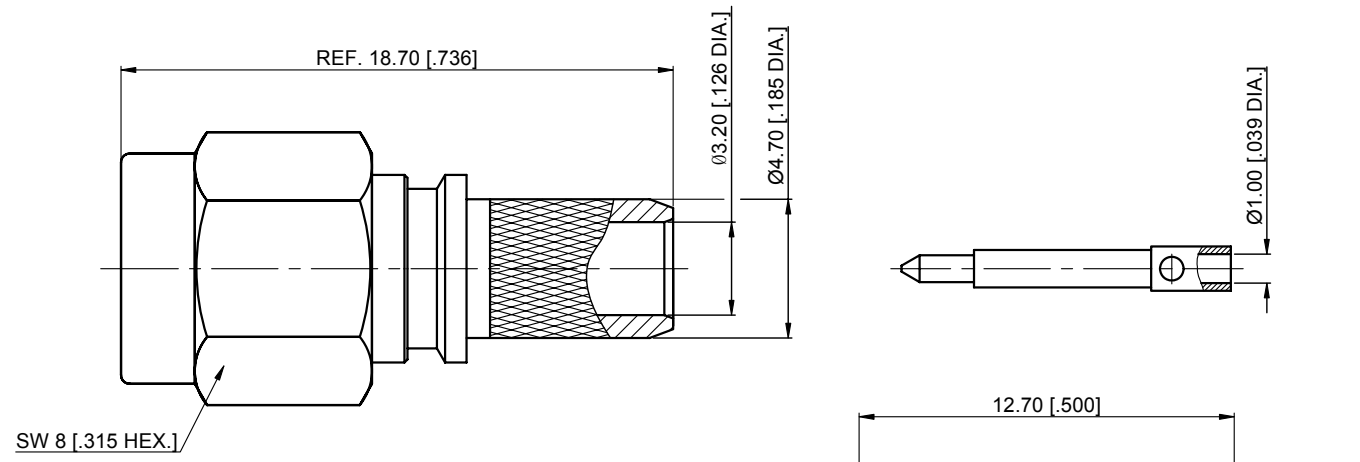
Material & Finish

Body	Brass, See Table
Pin Contact	Brass, Gold-plated
Coupling Nut	Brass, See Table
Crimp Ferrule	Copper, Nickel-plated
Insulator	PTFE
Gasket	Silicone rubber

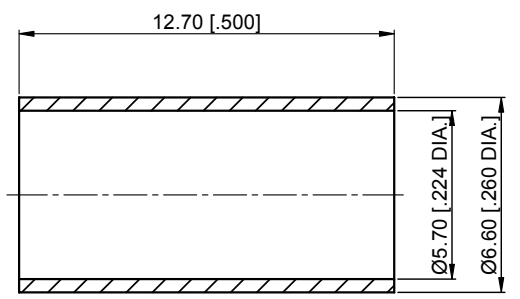
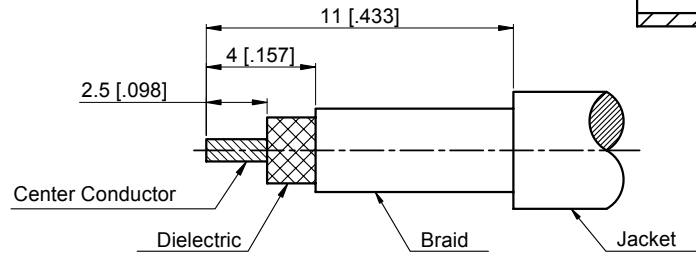
Interface Standards

SMA	IEC-60169
-----	-----------

REVISIONS				
REV	DESCRIPTION OF REVISION	ECN No.	DATE	APPROVED
A	INITIAL RELEASE	---	08/11/2012	M. Dong
B	STRUCTURE CHANGED	---	10/16/2014	M. Dong
C	DIMENSIONS CHANGED	---	02/23/2017	M. Dong



Part Number	Part / Finish
60-03-1M21-154-1	Bodies / Gold
	Coupling Nut / Gold
60-03-1M21-154-2	Bodies / Nickel
	Coupling Nut / Nickel



1. CRIMP FERRULE
HEX. CRIMP TOOL SIZE : 5.54 [.218]

Cable Stripping Dimensions

UNLESS OTHERWISE SPECIFIED, DIMENSIONS ARE IN MILLIMETERS [INCHES]. UNLESS OTHERWISE SPECIFIED DIMENSIONAL TOLERANCES ARE: .XX ±0.13 [.005"] .X ±0.20 [.008"] X ±0.50 [.019"] ANGULAR TOLERANCES ARE: ALL ±1° DO NOT SCALE DRAWING PROJECTION:	DRAWN: L. Ma 02/23/2017 CHECKED: J. Zhu 02/23/2017 APPROVED: M. Dong 02/23/2017
---	---

TITLE: SMA Straight Male Crimp for RG142/RG223/RG400 Cable
--

CMPPTER[®]
Cmppter Electronics Co., Ltd. www.cmppter.com

PART No.:
60-03-1M21-154

SIZE: A4	SCALE: 4:1	SHEET: 1/1	REV: C
----------	------------	------------	--------

- NOTES:
- ALL SPECIFICATIONS ARE SUBJECT TO CHANGE WITHOUT NOTICE AT ANY TIME
 - UNLESS OTHERWISE SPECIFIED ALL DIMENSIONS ARE NOMINAL.