

TECHNICAL DATA

Electrical

Impedance	50 Ω
Frequency range	0~6 GHz
Withstanding voltage	500 V
Insulation resistance	≥5000MΩ

Mechanical & Environmental

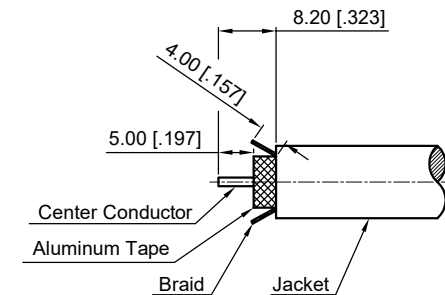
Durability (matings)	>500
Temperature range	-55 °C ~ +165 °C
RoHS Compliant	Yes

Material & Finish

Body	Brass, Nickel-plated
Pin Contact	Brass, Gold-plated
Coupling Nut	Brass, Nickel-plated
Back Nut	Brass, Nickel-plated
Sleeve	Brass, Silver-plated
Upper Shim	Brass, Silver-plated
Lower Shim	Brass, Nickel-plated
Insulator	PTFE
Gasket	Silicone Rubber

Interface Standards

SMA	IEC-60169
-----	-----------

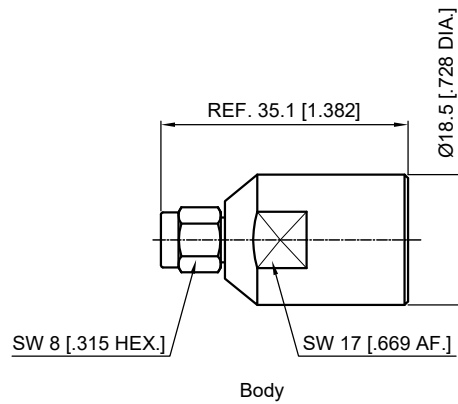


Recommended Cable Stripping Dimensions

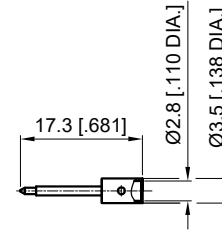
NOTES:

- ALL SPECIFICATIONS ARE SUBJECT TO CHANGE WITHOUT NOTICE AT ANY TIME
- UNLESS OTHERWISE SPECIFIED ALL DIMENSIONS ARE NOMINAL.

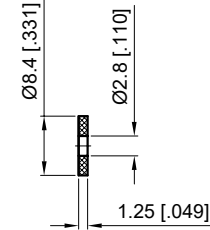
REVISIONS				
REV	DESCRIPTION OF REVISION	ECN No.	DATE	APPROVED
A	INITIAL RELEASE	---	08/15/2007	M. Dong
B	DIMENSIONS CHANGED	---	09/29/2019	M. Dong
C	SHOW PARTS DETAILS	---	10/23/2019	M. Dong



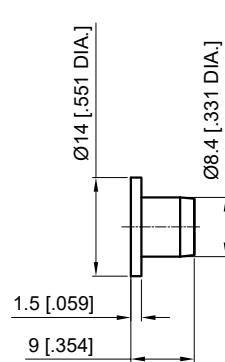
Body



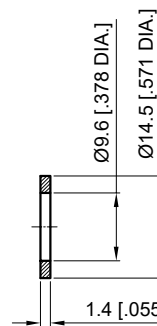
Pin Contact



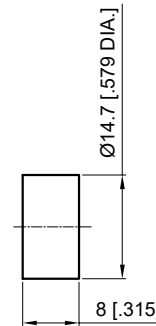
Insulator Spacer



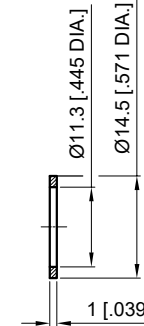
Sleeve



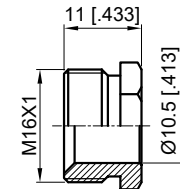
Upper Shim



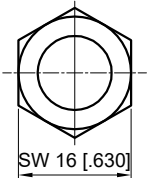
Gasket



Lower Shim



Back Nut



UNLESS OTHERWISE SPECIFIED, DIMENSIONS ARE IN MILLIMETERS (INCHES).	
UNLESS OTHERWISE SPECIFIED DIMENSIONAL TOLERANCES ARE:	
.XX	±0.13 [.005"]
X	±0.20 [.008"]
X	±0.50 [.019"]
ANGULAR TOLERANCES ARE: ALL= ±1°	
DO NOT SCALE DRAWING	
PROJECTION:	

DRAWN:	L. Ma	10/23/2019
CHECKED:	J. Zhu	10/23/2019
APPROVED:	M. Dong	10/23/2019

TITLE: SMA Straight Male Clamp for LMR400 Cable Connectors



Cmpter Electronics Co., Ltd. www.cmpter.com

PART No.: 60-03-4M01-012

SIZE: A4	SCALE: 1:1	SHEET: 1/1	REV: C
----------	------------	------------	--------