

REV	DESCRIPTION OF REVISION	ECN No.	BY	DATE	APPROVED
A	INITIAL RELEASE	—	L. Ma	09/01/08	M. Dong

TECHNICAL DATA

Electrical data

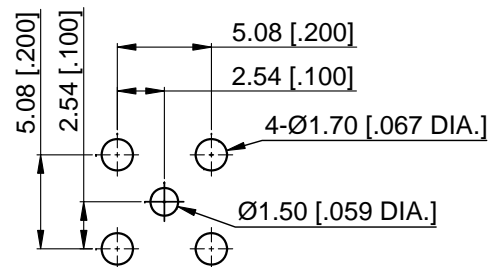
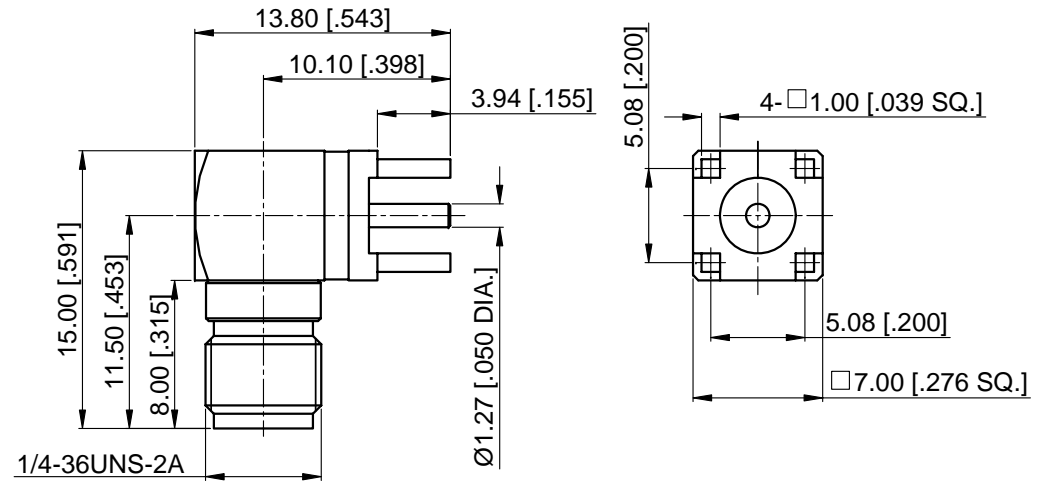
Impedance	50 Ω
Frequency range	0~6 GHz
Insulation resistance	$\geq 5 \times 10^3 M\Omega$
Withstanding voltage	1000 V

Mechanical data

Temperature range	-65 $^{\circ}\text{C}$ ~ +165 $^{\circ}\text{C}$
Durability (matings)	>500

Material data


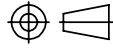
Bodies	Brass, Gold-plated
Pin Contact	Beryllium Copper Alloy, Gold-plated
Insulator	PTFE



Recommended Mounting Hole

NOTES:

1. ALL SPECIFICATIONS ARE SUBJECT TO CHANGE WITHOUT NOTICE AT ANY TIME
2. CUSTOMER OUTLINE DRAWING FOR REFERENCE ONLY

DRAWN: L. Ma 09/01/08	TITLE:	 www.cmppter.com		
ENGINEER: J. Zhu 09/01/08	SMA Right Angle PCB Jack			
APPROVED: M. Dong 09/01/08		 DIMENSIONS IN MILLIMETERS (mm)		
TOLERANCE UNLESS OTHERWISE SPECIFIED	PART No.: 60-12-5M8-049			
X ± 0.50 [0.019"] .X ± 0.20 [0.008"] .XX ± 0.10 [0.004"] ANGLES $\pm 1^{\circ}$	SIZE: A4	SCALE: 2.5:1	SHEET: 1/1	REV: A