

REVISIONS				
REV	DESCRIPTION OF REVISION	ECN No.	DATE	APPROVED
A	INITIAL RELEASE	—	08/11/2016	M. Dong

## TECHNICAL DATA

### Electrical

Impedance	50 Ω
Frequency range	0~3 GHz
Withstanding voltage	1000 V
Insulation resistance	≥5x10 <sup>3</sup> MΩ

### Mechanical & Environmental

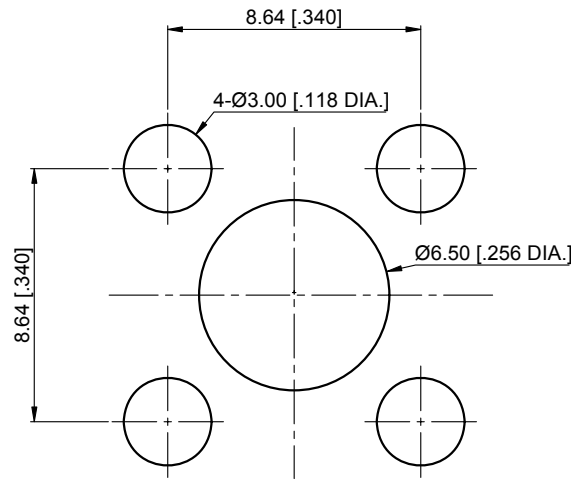
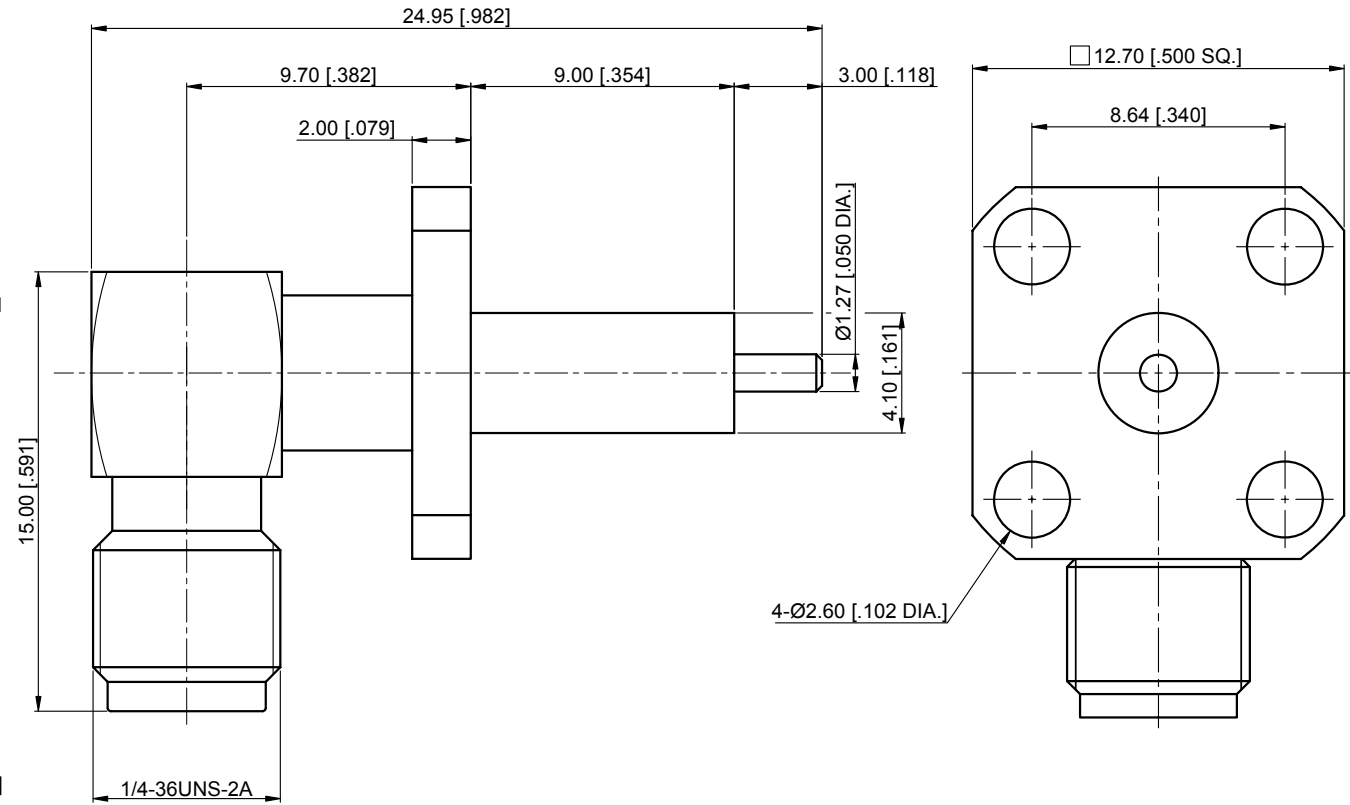
Durability (matings)	>500
Temperature range	-55 °C ~ +165 °C
RoHS Compliant	Yes

### Material & Finish

Body	Brass, Gold-plated
Pin Contact	Beryllium Copper Alloy, Gold-plated
Insulator	PTFE

### Interface Standards

SMA	IEC-60169
-----	-----------



Recommended Mounting Hole

### NOTES:

- ALL SPECIFICATIONS ARE SUBJECT TO CHANGE WITHOUT NOTICE AT ANY TIME
- UNLESS OTHERWISE SPECIFIED ALL DIMENSIONS ARE NOMINAL.

UNLESS OTHERWISE SPECIFIED, DIMENSIONS ARE IN MILLIMETERS [INCHES] UNLESS OTHERWISE SPECIFIED DIMENSIONAL TOLERANCES ARE:

.XX	±0.13 [.005"]
.X	±0.20 [.008"]
X	±0.50 [.019"]

ANGULAR TOLERANCES ARE: ALL=±1°

DO NOT SCALE DRAWING

PROJECTION:

DRAWN:	L. Ma	08/11/2016
CHECKED:	J. Zhu	08/11/2016
APPROVED:	M. Dong	08/11/2016

TITLE:  
**SMA Right Angle Female,  
4 Hole Flange Mount**

**CMPPTER**<sup>®</sup>

Cmptter Electronics Co., Ltd. [www.cmptter.com](http://www.cmptter.com)

PART No.:

**60-12-8F7-240**

SIZE:	SCALE:	SHEET:	REV:
A4	4:1	1/1	A