

REVISIONS

REV	DESCRIPTION OF REVISION	ECN No.	DATE	APPROVED
A	INITIAL RELEASE	---	07/13/2017	M. Dong
B	PART NO. CORRECTED	---	09/15/2017	M. Dong
C	TECHNICAL DATA CHANGED	---	10/20/2017	M. Dong
D	STRUCTURE CHANGED	---	10/23/2017	M. Dong
E	DIMENSIONS CHANGED	---	11/23/2017	M. Dong

TECHNICAL DATA

Electrical

Impedance 50 Ω
 Frequency range 0~6 GHz
 Withstanding voltage 500 V
 Insulation resistance ≥5000MΩ

Mechanical & Environmental

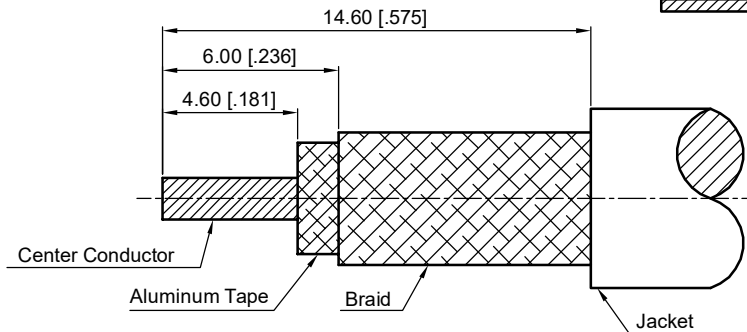
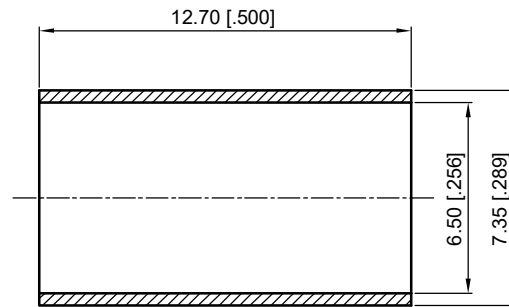
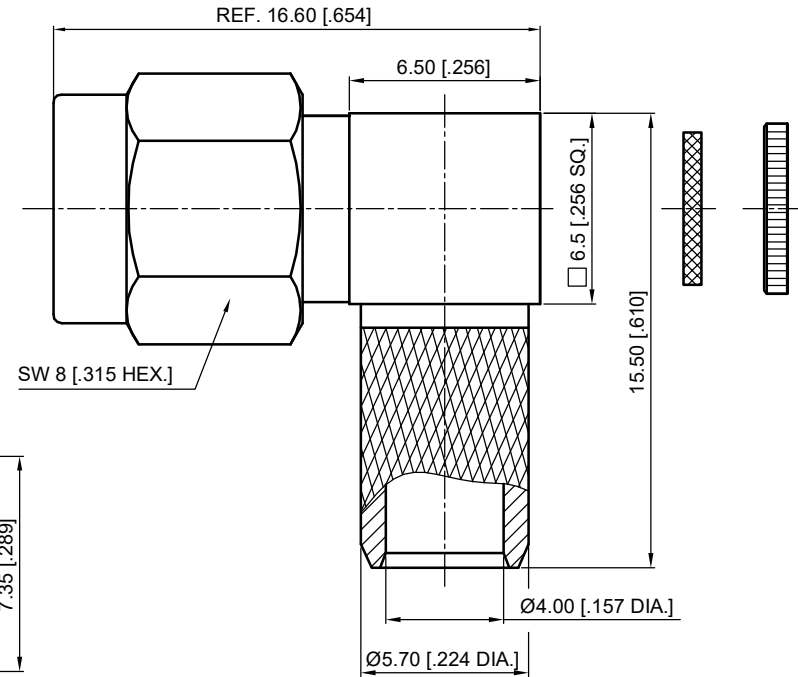
Durability (matings) >500
 Temperature range -55 °C ~ +165 °C
 RoHS Compliant Yes

Material & Finish

Body Brass, Gold-plated
 Pin Contact Brass, Gold-plated
 Coupling Nut Brass, Gold-plated
 Crimp Ferrule Copper, Nickel-plated
 Insulator PTFE
 Gasket Silicone Rubber

Interface Standards

SMA IEC-60169



Recommended Cable Stripping Dimensions

1. CRIMP FERRULE
 HEX.CRIMP TOOL SIZE: 6.48 [0.255]

- NOTES:
- ALL SPECIFICATIONS ARE SUBJECT TO CHANGE WITHOUT NOTICE AT ANY TIME
 - UNLESS OTHERWISE SPECIFIED ALL DIMENSIONS ARE NOMINAL.

UNLESS OTHERWISE SPECIFIED, DIMENSIONS ARE IN MILLIMETERS [INCHES].
 UNLESS OTHERWISE SPECIFIED DIMENSIONAL TOLERANCES ARE:

XX ±0.13 [0.005"]
 X ±0.20 [0.008"]
 X ±0.50 [0.019"]

ANGULAR TOLERANCES ARE: ALL= ±1°

DO NOT SCALE DRAWING

PROJECTION:

DRAWN:	L. Ma	11/23/2017
CHECKED:	J. Zhu	11/23/2017
APPROVED:	M. Dong	11/23/2017

TITLE:
**SMA Right Angle Male Crimp
 for LMR240 Cable**

CMPPTER®
 Cmppter Electronics Co., Ltd. www.cmppter.com

PART No.:
60-13-1M10-261

SIZE: A4	SCALE: 4:1	SHEET: 1/1	REV: E
-------------	---------------	---------------	-----------