

REVISIONS

REV	DESCRIPTION OF REVISION	ECN No.	DATE	APPROVED
A	INITIAL RELEASE	---	03/21/2011	M. Dong
B	DIMENSIONS CHANGED	---	05/18/2014	M. Dong

TECHNICAL DATA

Electrical

Impedance 50 Ω
 Frequency range 0~3 GHz
 Insulation resistance ≥3x10³ MΩ
 Withstanding voltage 500 V

Mechanical & Environmental

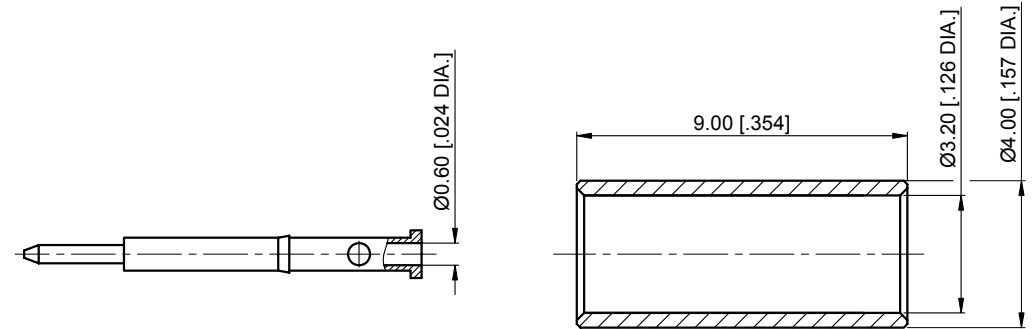
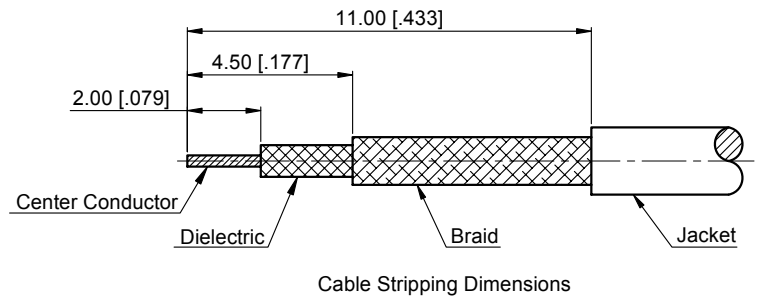
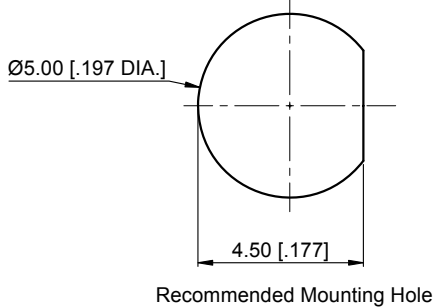
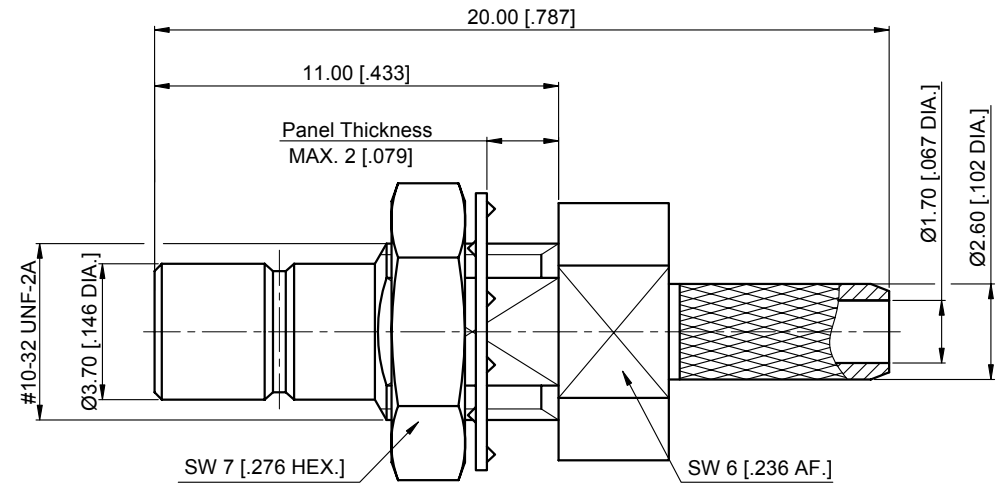
Durability (matings) >500
 Temperature range -55 °C ~ +165 °C
 RoHS Compliant Yes

Material & Finish

Body Brass, Gold-plated
 Pin Contact Brass, Gold-plated
 Fastening Nut Brass, Gold-plated
 Crimp Ferrule Copper, Nickel-plated
 Insulator PTFE

Interface Standards

SMB IEC 60169



1. CRIMP FERRULE
 HEX. CRIMP TOOL SIZE: 3.25 [.128]

UNLESS OTHERWISE SPECIFIED, DIMENSIONS ARE IN MILLIMETERS [INCHES].
 UNLESS OTHERWISE SPECIFIED DIMENSIONAL TOLERANCES ARE:

.XX	±0.13 [.005"]
.X	±0.20 [.008"]
X	±0.50 [.019"]

ANGULAR TOLERANCES ARE: ALL=±1°

DO NOT SCALE DRAWING

PROJECTION:

DRAWN:	L. Ma	05/18/2014
CHECKED:	J. Zhu	05/18/2014
APPROVED:	M. Dong	05/18/2014

TITLE:
 SMB Straight Bulkhead Jack (Male Contact Pin) Crimp for LMR100/RG174/RG316 Cable

CMPPTER[®]
 Cmppter Electronics Co., Ltd. www.cmppter.com

PART No.:
70-02-1B00-019

SIZE: A4	SCALE: 5:1	SHEET: 1/1	REV: B
----------	------------	------------	--------

NOTES:
 1. ALL SPECIFICATIONS ARE SUBJECT TO CHANGE WITHOUT NOTICE AT ANY TIME
 2. UNLESS OTHERWISE SPECIFIED ALL DIMENSIONS ARE NOMINAL.